



# **STRONGWELL**

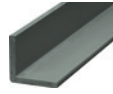
## **AVAILABILITY LIST (METRIC)**

EXTREN® Structural Shapes and Plate.....	2
Special Composite Shapes .....	4
DURADEK® Pultruded Grating.....	6
DURAGRATE® Molded Grating .....	8
DURATREAD™ Molded Stair Tread Covers.....	9
SAFRAIL™ Industrial Railing Systems.....	9
CUSTOM Handrail Systems .....	10
Baffle Wall Panels .....	11
COMPOSOLITE® Building Panel System .....	11
DURASHIELD® Foam Core Building Panel System .....	11
DURASHIELD HC® Hollow Core Building Panel System.....	11
SAFPLANK® Interlocking Decking System .....	12
SAFDECK® Overlapping Decking System .....	12
STRONGDEK™ Architectural Decking System .....	12
FIBREBOLT® Studs and Nuts .....	12
HS ARMOR PANEL Ballistic Panel.....	13
General Information .....	14

# EXTREN

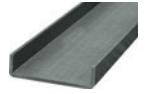
## FIBERGLASS STRUCTURAL SHAPES & PLATE

### ANGLE



SIZES IN mm	LENGTH IN m	SERIES 500	SERIES 525	SERIES 625	kg PER LIN. m
25.4 x 3.18	6.1	STOCKED	STOCKED	STOCKED	0.27
31.75 x 3.18	-	NS	NS	NS	0.36
31.75 x 4.76	6.1	STOCKED	STOCKED	NS	0.52
38.1 x 3.18	6.1	NS	STOCKED	NS	0.43
38.1 x 4.76	-	NS	NS	NS	0.64
38.1 x 6.35	6.1	STOCKED	STOCKED	STOCKED	0.83
50.8 x 3.18	-	NS	NS	NS	0.60
50.8 x 4.76	6.1	STOCKED	STOCKED	NS	0.88
50.8 x 6.35	6.1	STOCKED	STOCKED	STOCKED	1.15
66.68 x 41.28 x 4.76	-	NS	NS	NS	0.91
76.2 x 6.35	6.1	STOCKED	STOCKED	STOCKED	1.77
76.2 x 9.53	6.1	STOCKED	STOCKED	STOCKED	2.62
76.2 x 25.4 x 4.76	-	NS	NS	NS	0.99
101.6 x 6.35	6.1	STOCKED	STOCKED	STOCKED	2.40
101.6 x 9.53	6.1	STOCKED	STOCKED	STOCKED	3.56
101.6 x 12.7	6.1	NS	STOCKED	STOCKED	4.69
117.48 x 41.28 x 4.76	-	NS	NS	NS	1.36
101.6 x 1.67 x 4.76	-	NS	NS	NS	1.22
127 x 12.7	-	NS	NS	NS	5.89
152.4 x 6.35	6.1	NS	STOCKED	NS	3.68
152.4 x 9.53	6.1	NS	STOCKED	NS	5.43
152.4 x 12.7	6.1	STOCKED	STOCKED	STOCKED	7.14
168.28 x 41.28 x 4.76	-	NS	NS	NS	1.81
152.4 x 41.28 x 4.76	-	NS	NS	NS	1.67
219.08 x 41.28 x 4.76	-	NS	NS	NS	2.11

### CHANNEL



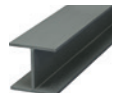
SIZES IN mm	LENGTH IN m	SERIES 500	SERIES 525	SERIES 625	kg PER LIN. m
38.1 x 25.4 x 4.76	-	NS	NS	NS	0.74
38.1 x 38.1 x 6.35	6.1	NS	STOCKED	NS	1.25
50.8 x 14.29 x 3.18	6.1	STOCKED	STOCKED	NS	0.43
50.8 x 22.23 x 6.35	-	NS	NS	NS	1.00
66.68 x 3.18 x 31.75 x 4.76	-	NS	NS	NS	0.94
76.2 x 22.23 x 6.35	6.1	STOCKED	STOCKED	STOCKED	0.84
76.2 x 25.4 x 4.76	-	NS	NS	NS	1.25
76.2 x 38.1 x 6.35	-	NS	NS	NS	1.64
88.9 x 38.1 x 4.76	6.1	NS	STOCKED	NS	1.38
101.6 x 26.99 x 3.18	-	NS	NS	NS	0.89
101.6 x 28.58 x 6.35	6.1	STOCKED	STOCKED	NS	1.73
101.6 x 34.93 x 4.76	6.1	STOCKED	STOCKED	STOCKED	1.44
127 x 34.93 x 6.35	-	NS	NS	NS	2.20
139.7 x 38.1 x 4.76	6.1	NS	STOCKED	NS	1.86
139.7 x 38.1 x 6.35	6.1	NS	STOCKED	NS	2.50
152.4 x 41.28 x 4.76	-	NS	NS	NS	1.67
152.4 x 42.55 x 6.35	6.1	STOCKED	STOCKED	STOCKED	2.66
152.4 x 42.86 x 9.53	6.1	NS	STOCKED	NS	4.03
203.2 x 55.56 x 6.35	6.1	NS	STOCKED	NS	3.71
203.2 x 55.56 x 9.53	6.1	STOCKED	STOCKED	STOCKED	5.45
254 x 69.85 x 12.7	6.1	NS	STOCKED	STOCKED	8.18
254 x 69.85 x 12.7	7.3	NS	STOCKED	STOCKED	9.06
304.8 x 76.2 x 12.7	-	NS	NS	NS	8.43
304.8 x 76.2 x 12.7	7.3	NS	STOCKED	STOCKED	10.21
355.6 x 88.9 x 19.05	-	NS	NS	NS	18.27
457.2 x 55.56 x 4.76	-	NS	NS	NS	5.18
609.6 x 76.2 x 6.35	-	NS	NS	NS	9.49

### I-BEAM



SIZES IN mm	LENGTH IN m	SERIES 500	SERIES 525	SERIES 625	kg PER LIN. m
50.8 x 25.4 x 3.18	-	NS	NS	NS	0.58
76.2 x 38.1 x 6.35	-	NS	NS	NS	1.73
101.6 x 50.8 x 6.35	6.1	STOCKED	STOCKED	STOCKED	2.37
139.7 x 63.5 x 6.35	6.1	NS	STOCKED	NS	3.10
152.4 x 76.2 x 6.35	6.1	NS	STOCKED	NS	3.60
152.4 x 76.2 x 9.53	-	NS	NS	NS	5.28
152.4 x 101.6 x 6.35	-	NS	NS	NS	4.11
203.2 x 101.6 x 9.53	6.1	STOCKED	STOCKED	NS	7.16
203.2 x 101.6 x 12.7	-	NS	NS	NS	9.39
254 x 127 x 9.53	-	NS	NS	NS	9.03
254 x 127 x 12.7	6.1	NS	STOCKED	NS	11.89
304.8 x 152.4 x 12.7	6.1	NS	STOCKED	STOCKED	14.39
304.8 x 152.4 x 12.7	7.3	NS	STOCKED	STOCKED	14.39
457.2 x 9.53 x 114.3 x 12.7	-	NS	NS	NS	13.87
609.6 x 9.53 x 190.5 x 19.05	7.3	NS	STOCKED	NS	24.88

### WIDE FLANGE BEAM



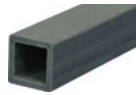
SIZES IN mm	LENGTH IN m	SERIES 500	SERIES 525	SERIES 625	kg PER LIN. m
50.8 x 3.18	-	NS	NS	NS	0.77
76.2 x 6.35	6.1	STOCKED	STOCKED	NS	2.51
101.6 x 6.35	6.1	STOCKED	STOCKED	STOCKED	3.30
101.6 x 9.53	-	NS	NS	NS	4.95
152.4 x 6.35	6.1	STOCKED	STOCKED	STOCKED	5.24
152.4 x 9.53	6.1	STOCKED	STOCKED	STOCKED	7.63
203.2 x 9.53	6.1	NS	STOCKED	STOCKED	10.37
203.2 x 12.7	6.1	NS	STOCKED	STOCKED	13.74
254 x 9.53	6.1	NS	NS	STOCKED	13.07
254 x 9.53	9.75	NS	STOCKED	STOCKED	10.29
254 x 12.7	-	NS	NS	NS	17.68
304.8 x 12.7	-	NS	NS	NS	20.80
304.8 x 12.7	7.3	NS	NS	STOCKED	20.80

Series 500 - Polyester resin, olive green  
 Series 525 - Polyester resin, flame retardant, slate gray  
 Series 625 - Vinyl Ester resin, flame retardant, beige

Items are non-stocked items

NOTE: Inventory of nonstocked items may be available due to overruns.

## SQUARE TUBE



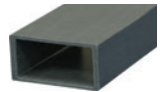
SIZES IN mm	LENGTH IN m	SERIES 500	SERIES 525	SERIES 625	kg PER LIN. m
25.4 x 3.18	6.1	STOCKED	STOCKED	NS	0.49
31.75 x 3.18	-	NS	NS	NS	0.61
38.1 x 3.18	6.1	STOCKED	STOCKED	NS	0.82
38.1 x 6.35	-	NS	NS	NS	1.46
44.45 x 3.18	-	NS	NS	NS	0.95
44.45 x 6.35	-	NS	NS	NS	1.77
50.8 x 3.18	6.1	NS	STOCKED	NS	1.10
50.8 x 6.35 ‡	6.1	STOCKED	STOCKED	STOCKED	2.08
63.5 x 6.35	-	NS	NS	NS	2.66
76.2 x 3.18	-	NS	NS	NS	1.73
76.2 x 6.35	6.1	STOCKED	STOCKED	STOCKED	3.27
76.2 x 9.53	-	NS	NS	NS	4.76
88.9 x 6.35	6.1	NS	STOCKED	STOCKED	3.67
101.6 x 6.35	6.1	STOCKED	STOCKED	STOCKED	4.58
101.6 x 9.53	-	NS	NS	NS	6.55
152.4 x 9.53	6.1	NS	STOCKED	NS	9.79

## ROUND TUBE



SIZES IN mm	LENGTH IN m	SERIES 500	SERIES 525	SERIES 625	kg PER LIN. m
25.4 x 3.18	-	NS	NS	NS	0.37
31.75 x 3.18	-	NS	NS	NS	0.48
38.1 x 3.18	-	NS	NS	NS	0.67
38.1 x 6.35	-	NS	NS	NS	1.18
44.45 x 3.18	-	NS	NS	NS	0.70
44.45 x 6.35	-	NS	NS	NS	1.40
50.8 x 3.18	-	NS	NS	NS	0.89
50.8 x 6.35	6.1	STOCKED	STOCKED	NS	1.64
63.5 x 6.35	6.1	STOCKED	STOCKED	NS	2.13
76.2 x 6.35	-	NS	NS	NS	2.53
88.9 x 3.56	-	NS	NS	NS	1.80
101.6 x 6.35	-	NS	NS	NS	3.51
127 x 6.35	-	NS	NS	NS	4.58
152.4 x 3.18	-	NS	NS	NS	2.74
152.4 x 6.35	-	NS	NS	NS	5.60

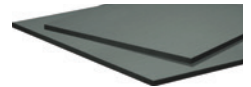
## RECTANGULAR TUBE



SIZES IN mm	LENGTH IN m	SERIES 500	SERIES 525	SERIES 625	kg PER LIN. m
63.5 x 41.28 x 3.18	-	NS	NS	NS	1.10
101.6 x 3.18 x 50.8 x 6.35	6.1	STOCKED	STOCKED	NS	2.26
88.9 x 139.7 x 6.35	6.1	NS	STOCKED	NS	5.00
165.1 x 6.35 x 50.8 x 12.7	-	NS	NS	NS	5.61
177.8 x 101.6 x 6.35	-	NS	NS	NS	6.27
228.6 x 152.4 x 7.94	-	NS	NS	NS	10.28
228.6 x 152.4 x 11.11	-	NS	NS	NS	14.26

## PLATE

EXTREN® plate is a stocked item and is usually available on short notice. Stock size is 1.22m x 2.44m. 1.52m wide plate is also available, non-stocked. Other sizes are available and will be quoted upon request.



THICKNESS IN mm	SERIES 500	SERIES 525	SERIES 625	WEIGHT kg PER m²
3.18	STOCKED	STOCKED	STOCKED	5.57
4.76	STOCKED	NS	NS	8.35
6.35	STOCKED	STOCKED	STOCKED	11.42
9.53	STOCKED	STOCKED	NS	18.86
12.7	STOCKED	STOCKED	STOCKED	22.85
15.88	NS	NS	NS	28.27
19.05	STOCKED	STOCKED	STOCKED	33.88
25.4	NS	STOCKED	STOCKED	45.26

‡ Also stocked in Series 525 yellow  
 ■ Items are non-stocked items

Series 500 - Polyester resin, olive green  
 Series 525 - Polyester resin, flame retardant, slate gray  
 Series 625 - Vinyl Ester resin, flame retardant, beige

NOTE: Inventory of nonstocked items may be available due to overruns.

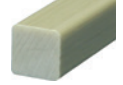
# EXTREN TC® ROD AND BAR

**THERMAL CURE ROD AND BAR** is produced using all longitudinal reinforcements with low speed and high temperature, which provides a rich surface appearance. It has no surfacing veil, no pigment and is not fire retardant. On request, Strongwell can quote special formulations including resin type, fire retardant properties, etc. Because it maintains high electrical standards, thermal cure rod is most commonly specified for electrical applications. Normally stocked for prompt delivery. *Thermal cure rod and bar was not designed to be machined.*

## ROUND ROD\*



## SQUARE ROD\*



SIZES IN mm	THERMAL CURE	kg PER LIN. m
6.35	STOCKED	0.06
7.94	STOCKED	0.10
9.53	STOCKED	0.15
12.7	STOCKED	0.25
15.88	STOCKED	0.40
19.05	STOCKED	0.58
20.64	NS	0.67
22.23	NS	0.79
25.4	STOCKED	1.03
28.58	NS	1.29
31.75	NS	1.61
38.1	STOCKED	2.26
50.8	NS	4.18

SIZES IN mm	THERMAL CURE	kg PER LIN. m
12.7	STOCKED	0.33
15.88	STOCKED	0.51
19.05	NS	0.73
25.4	STOCKED	1.29
31.75	NS	1.95
38.1	STOCKED	2.90

Sizes 19.05mm diameter and smaller will be stocked in Chatfield, MN

## SPECIAL COMPOSITE SHAPES

(SPECIAL COMPOSITE DESIGN — NOT EXTREN® COMPOSITE)

All Special Composite Shapes are Non-stocked items unless otherwise noted.

Tooling is available for the following special non-stocked items - Sizes in mm

	PE	PE/FR	VE/FR	kg PER LIN. m
<b>TOP RAIL</b>				
50.8 x 6.35 Modified Rd Tube	NS	NS	NS	1.92
<b>FLIGHT CHANNEL</b>				
133.35 x 3.18 x 63.5 x 4.76	NS	NS	NS	2.35
180.98 x 3.18 x 63.5 x 4.76	NS	NS	NS	2.41
<b>CHANNEL</b>				
88.9 x 50.4 x 5.56	NS	STOCKED	NS	2.05
47.63 x 3.18 x 28.58 x 4.78**	NS	NS	NS	0.71
83.57 x 3.25 x 29.97 x 4.83**	NS	NS	NS	0.97
84.07 x 3.43 x 30.15 x 5.33**	NS	NS	NS	1.03
101.6 x 3.18 x 44.45 x 4.75**	NS	NS	NS	1.40
<b>STRUT</b>				
41.28 x 41.28 x 3.97 - Type 1	NS	NS	NS	0.97
41.28 x 41.28 x 3.97 - Type 2	NS	NS	NS	1.04
41.28 x 41.28 x 3.97 - Double Strut	NS	NS	NS	1.86
41.28 x 25.4 x 3.97	NS	NS	NS	0.76
41.28 x 25.4 x 3.97 - Double Strut	NS	NS	NS	1.32

All items are stocked in 6.10m lengths unless otherwise noted

■ Items are non-stocked items

\* Special Composite Design - Not EXTREN® Composite

\*\* Non-stocked item; standard color - orange

# SPECIAL COMPOSITE SHAPES

(SPECIAL COMPOSITE DESIGN — NOT EXTREN® COMPOSITE)

All Special Composite Shapes are Non-stocked items unless otherwise noted.

Tooling is available for the following special non-stocked items - Sizes in mm

	PE	PE/FR	VE/FR	kg PER LIN. m
<b>SQUARE TUBE/ROUND HOLE</b>				
25.4 Sq. with 19.05 Rd. Hole - Type 1	NS	NS	NS	0.73
25.4 Sq. with 19.05 Rd. Hole - Type 2	NS	NS	NS	0.73
<b>SLIDE GUIDE</b>				
63.5 x 57.15 x 6.35	NS	NS	NS	1.68
<b>ANGLE</b>				
44.45 x 31.75 x 6.35	NS	NS	NS	0.79
266.7 x 266.7 x 31.75	NS	NS	NS	30.95
<b>FLAT STRIP</b>				
50.8 x 4.76*	NS	STOCKED	STOCKED	0.33
50.8 x 6.35	NS	NS	NS	0.58
76.2 x 4.76	NS	NS	NS	0.61
76.2 x 6.35	NS	STOCKED	NS	0.88
76.2 x 9.53	NS	NS	NS	1.34
76.2 x 12.7	NS	STOCKED	NS	1.68
88.9 x 12.7	NS	NS	NS	2.01
101.6 x 9.53	NS	NS	NS	1.73
101.6 x 12.7	NS	NS	NS	2.44
127 x 1.47	NS	NS	NS	0.39
152.4 x 3.18	NS	NS	NS	0.86
152.4 x 6.35	NS	NS	NS	1.92
<b>FLUTED TUBE</b>				
31.75**	NS	NS	STOCKED	0.60
<b>F-SECTION</b>				
139.7 x 25.4 x 6.35***	NS	NS	NS	2.35
152.4 x 38.1 x 6.35	NS	NS	NS	2.51
<b>Z-SECTION</b>				
31.75 x 63.5 x 3.18	NS	NS	NS	0.73
<b>CORNER POST</b>				
82.55 X 6.35	NS	NS	NS	3.50

All items are stocked in 6.10m lengths unless otherwise noted  
 Items are non-stocked items

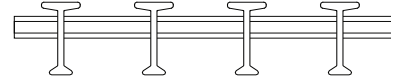
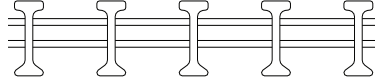
\* Stocked item in yellow in 7.32m lengths  
 \*\* Stocked item in yellow in 6.15m lengths  
 \*\*\* Stocked in Chatfield, MN

# DURA-DEK®

## PULTRUDED FIBERGLASS GRATING

*STOCKING LEVELS OF GRATING MAY VARY. CALL FOR AVAILABILITY.*

### STANDARD SIZE PANELS



PANEL SIZE (WIDTH X LENGTH)	PE I-6500 - 25.4mm VE I-6500 - 25.4mm	PE I-6500 - 38.1mm VE I-6500 - 38.1mm	PE T-5800 - 50.8mm VE T-5800 - 50.8mm
	WT. (kg)	WT. (kg)	WT. (kg)
0.91m x 3.05m	29.94	36.74	-
0.91m x 6.10m	59.87	73.48	70.76
1.22m x 2.44m	31.93	39.19	-
1.22m x 3.66m	47.90	58.79	56.61
1.22m x 6.10m	79.83	97.98	94.35
1.52m x 3.05m	49.90	61.24	61.24
1.52m x 6.10m	99.79	122.47	117.93

<b>Colors:</b>	<b>Yellow or Gray</b>	<b>UV Protection:</b>	<b>UV Inhibited with a Veil</b>
<b>Resins:</b>	<b>Fire Retardant Polyester - Standard Fire Retardant Vinyl Ester - Optional</b>	<b>Top Surface:</b>	<b>Epoxy Bonded Grit Coating</b>
		<b>Cross Rods:</b>	<b>203.2mm o.c.</b>

# DURA DEK®

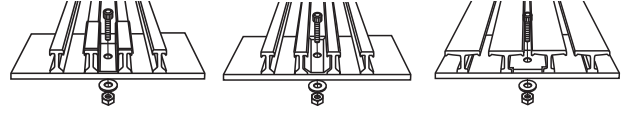
## PULTRUDED FIBERGLASS GRATING

### ACCESSORY ITEMS

ALL ITEMS GENERALLY ARE IN INVENTORY FOR IMMEDIATE SHIPMENT

#### PANEL HOLD DOWNS

(Price Does Not Include Nuts, Bolts & Washers)



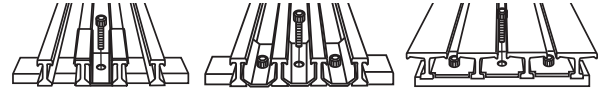
(No Broken Packages)

kg APPROX.  
(25 PER PACKAGE)

S.S. Insert Hold Down, all series (Specify I-6500 or T-5800)	0.45
S.S. Saddle Clip Only, I-6500 - 25.4mm	0.91
S.S. Saddle Clip Only, I-6500 - 38.1mm	1.02
S.S. Saddle Clip Only, T-5800 - 50.8mm	1.47
6.35mm - 20 x 31.75mm S.S. Socket Head Cap Screw with Nut & Washer (For use with Hold Downs)	0.34

#### PANEL CONNECTORS ASSEMBLY

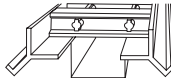
(Assembly includes Hold Down(s), Bolt(s) and Bottom Bar)



kg  
APPROX.

S.S. Insert Panel Connector, all series	0.18
S.S. Saddle Clip Panel Connector, I-6500 - 25.4mm	0.13
S.S. Saddle Clip Panel Connector, I-6500 - 38.1mm	0.14
S.S. Saddle Clip Panel Connector, T-5800 - 50.8mm	0.14

#### FIBERGLASS CURB ANGLE



kg APPROX.  
PER LIN. m

	LENGTH IN m		kg APPROX. PER LIN. m
25.4mm x 38.1mm	6.1	STOCKED	1.24
38.1mm x 38.1mm	6.1	STOCKED	1.38
50.8mm x 38.1mm	6.1	STOCKED	1.53
101.6mm x 57.15mm x 6.35mm (Slate Gray)	-	NS	7.93

**Color:** Gray  
**Resin:** Fire Retardant, Vinyl Ester

UV Inhibited with a Veil

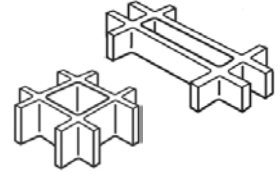
#### MISCELLANEOUS

kg  
APPROX.

Sealing Kit - 473.18 ml	0.74
177.8mm Tungston Carbide Tip Circular Blade	0.29
Tungston Carbide Tip Saber Saw Blade	0.01

# DURAGRATE®

## MOLDED FIBERGLASS GRATING



STOCKING LEVELS OF GRATING MAY VARY. CALL FOR PRICING, COLOR OPTIONS AND AVAILABILITY.

### RESINS OPTIONS:

GP — GENERAL POLYESTER RESIN SYSTEM	VE — VINYL ESTER RESIN SYSTEM
PP — PREMIUM POLYESTER RESIN SYSTEM	FF — FOOD GRADE RESIN SYSTEM

THICKNESS (mm)	MESH (mm)	PANEL SIZE (m)	ESTIMATED WEIGHT (kg)
25.4	25.4 x 101.6	0.91 x 3.05	38.10
25.4	25.4 x 101.6	1.22 x 2.44	40.82
25.4	25.4 x 101.6	1.22 x 3.66	61.24
25.4	38.1 x 38.1	0.91 x 3.05	35.38
25.4	38.1 x 38.1	1.22 x 2.44	37.65
25.4	38.1 x 38.1	1.22 x 3.66	56.70
38.1	38.1 x 38.1	0.91 x 3.05	51.71
38.1	38.1 x 38.1	1.22 x 2.44	55.34
38.1	38.1 x 38.1	1.22 x 3.66	83.01
50.8	50.8 x 50.8	1.22 x 3.66	87.09

### STAIR TREAD\*

38.1	38.1 x 152.4	0.57 x 3.05	27.22
------	--------------	-------------	-------

**\*NOTE: Nosing is gritted and same color as stair tread.**

• Other resins, colors and accessories available on special orders. Call factory for details.

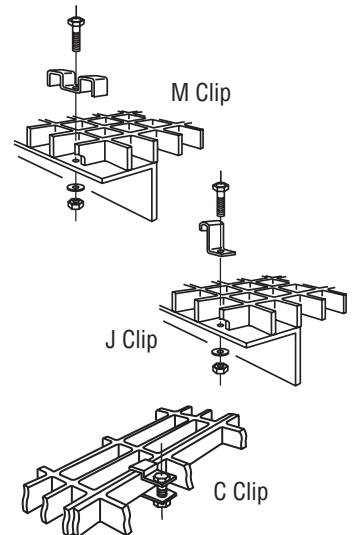
## ACCESSORY ITEMS

### ITEM (NO BROKEN PACKAGES)

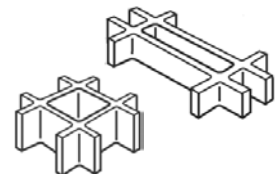
Type M Clip for 25.4mm x 25.4mm x 101.6mm Rectangular Mesh ② or ③
Type M Clip for 25.4mm x 38.1mm Square Mesh ② or ③
Type M Clip for 38.1mm x 38.1mm Square Mesh ⑤
Type M Clip Deep for 38.1mm x 38.1mm Square Mesh or 38.1mm x 152.4mm Rectangular Mesh ④
Type M Clip for 50.8mm x 50.8mm Square Mesh ⑥
Type J Clip for 25.4mm ①
Type J Clip for 38.1mm ①
Type J Clip for 50.8mm ①
Type C Clip Assembly for 25.4mm
Type C Clip Assembly for 38.1mm
Type C Clip Assembly for 50.8mm

### TYPICAL BOLTS TO USE FOR CLIPS:

① 6.35mm x 25.4mm Hex Head Cap Screw with Nut and Washer
② 6.35mm x 38.1mm Hex Head Cap Screw with Nut and Washer
③ 6.35mm x 44.45mm Hex Head Cap Screw with Nut and Washer
④ 6.35mm x 31.75mm Socket Head Cap Screw with Nut and Washer
⑤ 6.35mm x 50.8mm Hex Head Cap Screw with Nut and Washer
⑥ 6.35mm x 63.5mm Hex Head Cap Screw with Nut and Washer



(ALL CLIPS AND BOLTS S.S. 316)





# DURATREAD™

## MOLDED FIBERGLASS STAIR TREAD COVERS

*STOCKING LEVELS MAY VARY. CALL FOR PRICING, COLOR OPTIONS AND AVAILABILITY.*

### RESINS OPTIONS:

GP — GENERAL POLYESTER RESIN SYSTEM      VE — VINYL ESTER RESIN SYSTEM  
 PP — PREMIUM POLYESTER RESIN SYSTEM      FF — FOOD GRADE RESIN SYSTEM

TREAD (mm)	THICKNESS 3.18mm WEIGHT (kg)	THICKNESS 6.35mm WEIGHT (kg)
203.2	7.26	14.06
228.6	8.16	15.42
254	8.62	16.78
279.4	9.53	18.14
304.8	10.43	19.96

*\*All covers are 3.66m long. • No minimum on black with yellow nose covers. • The minimum order quantity for all other colors is 5 pieces.*

# SAF RAIL™

## INDUSTRIAL FIBERGLASS RAILING SYSTEMS

*ALL ITEMS GENERALLY ARE IN INVENTORY FOR IMMEDIATE SHIPMENT*

### SQUARE RAILING SYSTEM COMPONENTS

COMPONENT	WEIGHT (kg)
50.8mm x 50.8mm x 3.96mm Square Tube, Yellow Polyester Fire Retardant UV Inhibited @ 6.10m	1.41 / m
60.33mm x 60.33mm x 4.76mm Square Tube, Yellow Polyester Fire Retardant UV Inhibited @ 6.10m	2.02 / m
101.6 Kickplate Yellow Polyester Fire Retardant UV Inhibited @ 6.10m	0.97 / m
152.4 Kickplate Yellow Polyester Fire Retardant UV Inhibited @ 6.10m (365.76m mill run)	1.09 / m
Black End Caps	0.01 ea.
Adjustable Corner Assembly (Total Assembly)	0.16 ea.
90° Corner Plug	0.16 ea.
Kickplate Splice	0.05 ea.
Kickplate 90° Splice	0.07 ea.
Split Tube 203.2mm Length (for square handrail)	0.16 ea.
Split Tube 101.6mm Length (for square handrail)	0.08 ea.
Split Tube 3.66m Length (for square handrail)	2.78 ea.
152.4mm Square Plug	0.34 ea.
Square Plug 3.66m Length	8.27 ea.
3.18mm x 38.1mm Tension Pins	.02 / 10 pcs.
Epoxy Kits - 473.18 ml Clear	0.74 ea.
FRP Base Plate with Post - Total Height 1.02m (Polyester)	2.49 ea.
Alternate Handrail Post, 60.33mm x 60.33mm x 1.27m, Routed Out, No Bottom Plugs	2.59 ea.
90° Corner Sample	0.59 ea.
Tee Sample	0.41 ea.

**NOTE: UV Coating is recommended for exterior applications and is available at an additional cost.**

# SAFRAIL™

## INDUSTRIAL FIBERGLASS RAILING SYSTEMS

ALL ITEMS GENERALLY ARE IN INVENTORY FOR IMMEDIATE SHIPMENT



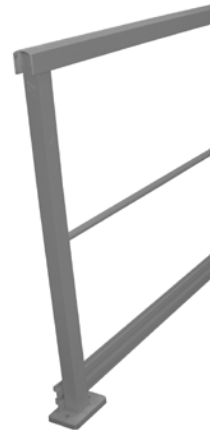
### ROUND RAILING SYSTEM COMPONENTS

COMPONENT	WEIGHT (kg)
48.26mm OD x 38.1mm ID Yellow Polyester Fire Retardant UV Inhibited	1.31 / m
101.6mm Kickplate Yellow Polyester Fire Retardant UV Inhibited @ 6.10m	0.97 / m
Black End Caps	0.02 ea.
Adjustable Corner Assembly (Total Assembly)	0.16 ea.
90° Corner Assembly	0.16 ea.
Intermediate Connectors	0.02 ea.
Kickplate Splice	0.05 ea.
Kickplate 90° Splice	0.07 ea.
Split Tube, 38.1mm x 101.6mm (for round handrail)	0.07 ea.
Split Tube, 38.1mm x 203.2mm (for round handrail)	0.14 ea.
Round Connector, 38.1mm x 203.2mm	0.24 ea.
3.18mm x 38.1mm Tension Pins	0.02 / 10 pcs.
FRP Base Plate with Post, Total Height 1.00m (YFRPE)	2.49 / pc.
Stainless Steel Kickplate Bracket	0.05 ea.
6.35mm x 25.4mm Stainless Steel Bolt Assembly	0.02 ea.

### CHANNEL TOP RAILING SYSTEM COMPONENTS

For more information on the Channel Top option, please refer to the SAFRIL™ brochure.

COMPONENT	
25.4mm Diameter Mid Rail, Yellow Polyester Fire Retardant, UV Coated	(1,524 linear meter min. run)
Channel Top Handrail, Yellow Polyester Fire Retardant, UV Coated	(1,524 linear meter min. run)
50.8mm x 50.8mm x 3.96mm Tube (for post), Yellow Polyester Fire Retardant, UV Coated	
101.6mm Kick Plate, Yellow Polyester Fire Retardant, UV Coated	



## CUSTOM FIBERGLASS RAILING SYSTEMS

### CUSTOM FABRICATED RAILING

Handrail may be ordered in custom colors and/or resins and may also be pre-fabricated. Prices and ship dates for custom fabricated handrail may be obtained by calling Strongwell Customer Service.

**NOTE: Strongwell recommends a coating to reduce color fade for outdoor applications. If a coating is not applied, components may fade rapidly.**

# FIBERGLASS BAFFLE WALL PANELS

## PANELS

WIDTH IN mm	LENGTH IN m	PE	kg PER LIN. m
304.8mm	-	NS	5.51
609.6mm	7.3	STOCKED	9.67

# COMPOSOLITE®

## FIBERGLASS BUILDING PANEL SYSTEM

## PANEL SYSTEM COMPONENTS

COMPONENTS	LENGTH IN m	PE	PE/FR	VE/FR	kg PER LIN. m
Panel**	6.1 & 7.3	NS	STOCKED	NS	11.19
Toggle	6.1	NS	STOCKED	NS	0.49
3-Way Connector	6.1	NS	STOCKED	NS	2.53
Hanger	-	NS	NS	NS	2.31
45° Connector	-	NS	NS	NS	2.60
86.87mm x 33.02mm x 3.18mm Cap Channel *	6.1	NS	STOCKED	NS	0.89
93.09mm x 50.8mm x 6.35mm Structural Cap Channel	-	NS	NS	NS	1.93

\* Also stocked in series 525 yellow, 6.10m lengths

# DURASHIELD®

## FIBERGLASS FOAM CORE BUILDING PANEL SYSTEM

## PANELS

THICKNESS IN mm	PE	PE/FR	VE/FR	kg PER LIN. m
25.4	NS	NS	NS	3.27
76.2	NS	NS	NS	11.68

# DURASHIELD HC®

## FIBERGLASS HOLLOW CORE BUILDING PANEL SYSTEM

## PANELS

THICKNESS IN mm	PE	PE/FR	VE/FR	kg PER LIN. m
25.4	NS	NS	NS	4.87

# FIBERGLASS DECKING PRODUCTS

## SAFPLANK®

FIBERGLASS INTERLOCKING DECKING SYSTEM

## SAFDECK®

FIBERGLASS OVERLAPPING DECKING SYSTEM

## STRONGDEK™

FIBERGLASS ARCHITECTURAL DECKING SYSTEM

### DECKING PANELS

PANEL	LENGTH IN m	PE	PE/FR	VE/FR	kg PER LIN. m
304.8mm SAFPLANK®	6.1 & 7.3	NS	STOCKED	NS	3.72
609.6mm SAFPLANK®	6.1 & 7.3	NS	STOCKED	NS	7.44
914.4mm SAFPLANK HD® **	7.3	NS	STOCKED	NS	31.32
SAFDECK® **	7.3	NS	STOCKED	NS	5.58
STRONGDEK™ **	7.3	NS	STOCKED	NS	3.84

### DECKING ACCESSORIES

SIZES IN mm	PE	PE/FR	VE/FR	kg PER LIN. m
55.88mm x 27.00mm x 14.30mm x 2.03mm Cap Channel	NS	NS	NS	0.36
STRONGDEK™ Starter Channel	NS	NS	NS	3.54

## FIBRE BOLT®

FIBERGLASS STUDS AND NUTS

### STUDS

SIZES IN mm	LENGTH IN m	STUDS PER PACKAGE	PACKAGE WEIGHT (kg)
9.53	1.2	15	2.04
12.7	1.2	10	2.27
15.88	1.2	10	3.40
19.05	1.2	6	3.18
25.4	1.2	4	3.86

### HEX NUTS

SIZES IN mm	NUTS PER PACKAGE	PACKAGE WEIGHT (kg)
9.53	100	0.68
12.7	100	0.91
15.88	100	1.72
19.05	25	1.36
25.4	25	1.36

# HS ARMOR PANELS

## FIBERGLASS BALLISTIC PANEL

### UL LEVEL 1 (OFF WHITE)

PANEL		kg PER LIN. m
6.35mm x 0.91m x 2.44m	STOCKED	12.11
6.35mm x 1.22m x 2.44m	STOCKED	16.37
6.35mm x 0.91m x 3.05m	STOCKED	12.11
6.35mm x 1.22m x 3.05m	STOCKED	16.37

### UL LEVEL 2 (OFF WHITE)

PANEL		kg PER LIN. m
8.89mm x 0.91m x 2.44m	STOCKED	16.46
8.89mm x 1.22m x 2.44m	STOCKED	21.31
8.89mm x 0.91m x 3.05m	STOCKED	16.46
8.89mm x 1.22m x 3.05m	STOCKED	21.31

### UL LEVEL 3 (OFF WHITE)

PANEL		kg PER LIN. m
12.7mm x 0.91m x 2.44m	STOCKED	23.36
12.7mm x 1.22m x 2.44m	STOCKED	32.29
12.7mm x 0.91m x 3.05m	STOCKED	23.36
12.7mm x 1.22m x 3.05m	STOCKED	32.29

# GENERAL INFORMATION

## EXTREN® SERIES 500

An all-purpose series utilizing a premium polyester resin system with a UV inhibitor.

**Color:** olive green

## EXTREN® SERIES 525

An all-purpose series utilizing a fire retardant premium polyester resin system with a UV inhibitor.

**Color:** slate gray (plus certain handrail and fixed ladder components in yellow)

## EXTREN® SERIES 625

A premium series — both fire retardant and highly corrosion resistant — utilizing a vinyl ester resin system with a UV inhibitor.

**Color:** beige

**Note 1:** Any Series 500, 525 and 625 EXTREN® product can be manufactured upon request to meet the mechanical and physical properties of BS EN 13706 (E23) European standards (minimum quantities may apply). All standard EXTREN® products meet and/or exceed the structural requirements of E17 European standards.

**Note 2:** EXTREN® products can be produced to meet NSF potable water standards. Minimum quantities may apply.

## STOCKED ITEMS

Carried in inventory, no minimum quantity required.

**LENGTHS CUT FROM STOCK:** Special lengths can be cut from stock shapes and rods. Plate can be cut to size desired from 1.22m x 2.44m stock. A fabrication cutting charge will be applied.

## NONSTOCKED ITEMS

Tooling available. Check for possible availability.

**SMALL QUANTITIES OF NONSTOCKED ITEMS:** These are occasionally available because of overruns. Purchaser having a requirement for small quantities of nonstocked items should inquire about current inventory status. Such items are subject to prior sale, so delivery cannot be guaranteed.

## MILL RUN

**SPECIAL MILL RUN VARIANCE:** The pultrusion process does not lend itself to producing exact quantities. Mill runs may vary 10%. If minimum quantities are required, orders should be placed considering these variances.

## MINIMUM ORDER VALUE

Minimum order value is \$250.

## COLORS

Special colors are available for shapes and plate. Extra cost will vary, depending on cost, amount of pigment required, and standards of acceptability. Minimum quantities may apply.

## SPECIAL RESINS AND FORMULAE

Special resins and resin mixes will be quoted specifically after resin mix has been tested for adaptability to the production process involved.

## PACKAGING

If other than standard packaging is required, contact Customer Service for additional costs.

## TERMS

All products are manufactured in accordance to tolerance properties as published in Strongwell's *Design Manual*. Strongwell's Standard Terms and Condition of Sale apply. F.O.B./Ex Works dispatch location.



ISO-9001 Quality Certified Manufacturing Plants



**BRISTOL LOCATION**  
400 Commonwealth Ave.  
Bristol, VA 24201 USA  
(276) 645-8000

**CHATFIELD LOCATION**  
1610 Highway 52 South  
Chatfield, MN 55923-9799 USA  
(507) 867-3479  
[www.strongwell.com](http://www.strongwell.com)

**HIGHLANDS LOCATION**  
26770 Newbanks Road  
Abingdon, VA 24210 USA  
(276) 645-8000