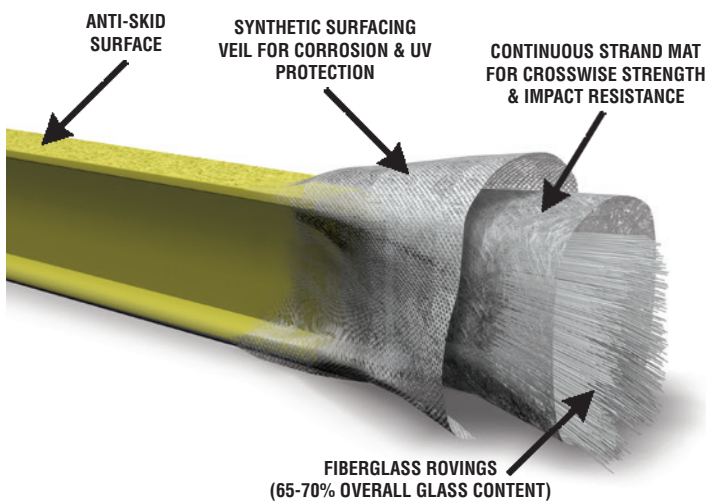
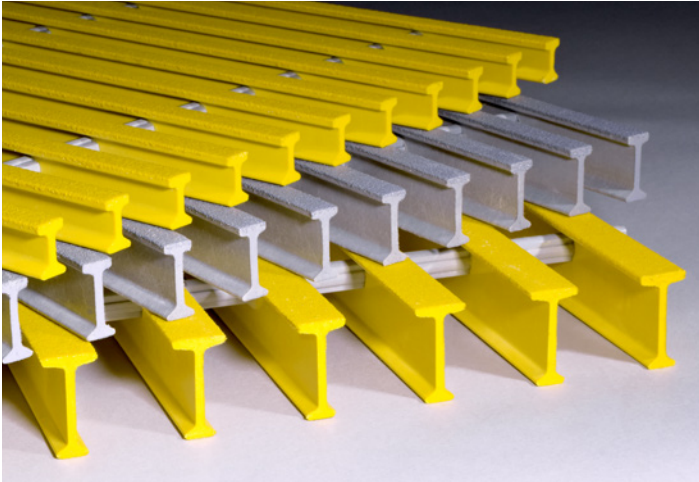


DURADEK® / DURAGRID® PULTRUDED GRATING

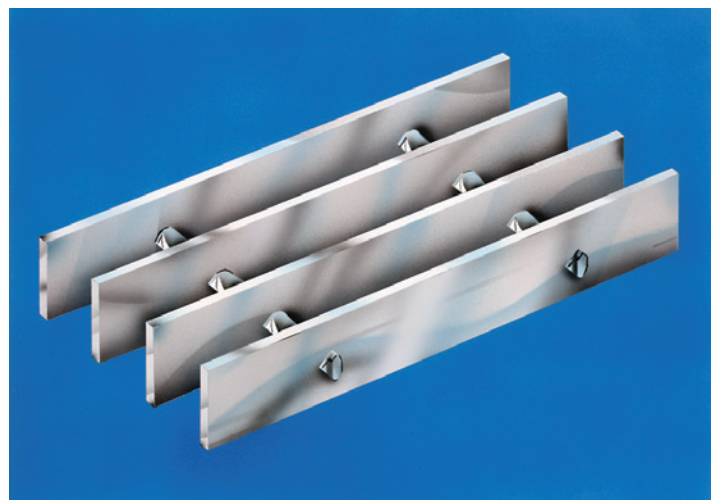
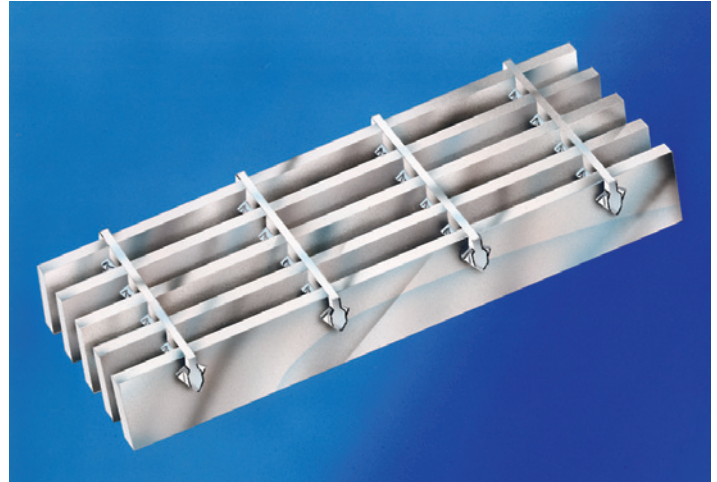


Strongwell combines superior raw materials, composite design, and the pultrusion process to manufacture DURADEK® and DURAGRID® - the highest quality pultruded fiberglass grating available.

Strongwell pultruded grating offers superior:

- **IMPACT RESISTANCE** - High ultimate strength prevents impact damage
- **CORROSION RESISTANCE** - Resists most acids, caustics and salts
- **SAFETY** - Low electrical conductivity, non-skid surface

ALUMINUM GRATING



In addition, DURADEK® / DURAGRID® are:

- **VERSATILE**
- **EASILY FIELD FABRICATED**
- **FIRE RETARDANT** - Meets requirements of Class 1 rating of 25 or less per ASTM E-84 and the self-extinguishing requirement of ASTM D-635
- **LIGHTWEIGHT** - 20-25% lighter than aluminum

DURADEK® and DURAGRID® contain **UV INHIBITORS**.

For more Strongwell pultruded grating design information, visit www.strongwell.com/designmanual for the online Strongwell Design Manual.

***Are DURADEK® or DURAGRID® the best grating choices to meet the requirements of your application?
Turn over to compare the features of Strongwell fiberglass pultruded grating and aluminum grating!***

DURADEK® / DURAGRID® PULTRUDED GRATING

VS. ALUMINUM GRATING

STRENGTH COMPARISON	DURADEK® I-6500 1-1/2", 1.71" on center 48" Span, Ultimate Load = 1784 PSF DURADEK® has a higher ultimate load carrying capacity and is 20-25% lighter than aluminum.	3/16" x 1-1/2" Bar, 1-3/16" on center 48" Span, Ultimate Load = 774 PSF
IMPACT RESISTANCE	Glass mat in Strongwell pultruded grating distributes impact load to prevent surface damage even in sub-zero temperatures. Will not permanently deform. Stays flat for the life of the product.	Will permanently deform under impact. Takes a permanent set (dishing) in trench applications due to overloading.
CORROSION RESISTANCE	Strongwell pultruded grating is resistant to corrosion caused by a broad range of acids, caustics and salts.	Corrosion resistant to only a narrow range of chemicals. Can cause galvanic corrosion.
SAFETY	Strongwell pultruded grating has a round silica grit bonded to the surface of bearing bars for non-skid safety. Low in electrical and thermal conductivity.	Flat bars are not skid resistant or only skid resistant in one direction. Grounding potential around electrical equipment.
VERSATILITY	Strongwell pultruded grating can be purchased in a safety yellow or gray with the resin pigmented throughout the bar. No painting required. Custom colors are also available.	Only one color. Expensive anodizing is required to achieve other colors.
EASY FIELD FABRICATION	Strongwell pultruded grating can be field fabricated with simple carpenter tools, is easy to cut and is lighter than aluminum.	Requires special blades and is harder to cut.
BANDING	DURADEK® and DURAGRID® do not leave a sharp edge when cut. The bars will not bend or deform in the lateral direction; therefore, Strongwell pultruded grating does not need to be banded.	Cutting a rectangular aluminum bar leaves sharp edges. The flat bars will bend and deform easily in the lateral direction; therefore, aluminum grating should be banded.

THE CHOICE!

DURADEK® / DURAGRID® High Strength, Pultruded Fiberglass Grating!



STRONGWELL

ISO-9001 Quality Certified Manufacturing Plants

BRISTOL LOCATION

400 Commonwealth Ave., P. O. Box 580
Bristol, VA 24203-0580 USA
(276) 645-8000

CHATFIELD LOCATION*

1610 Highway 52 South
Chatfield, MN 55923-9799 USA
(507) 867-3479

*DURADEK® / DURAGRID® manufacturing location

www.strongwell.com

ST0217
©2017 Strongwell