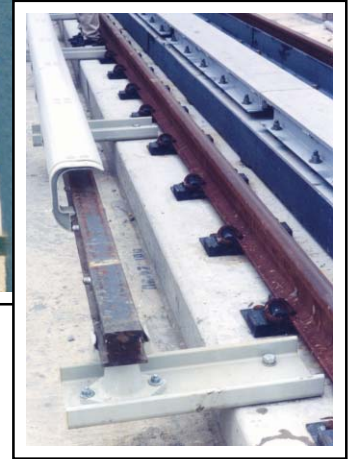


# STRONGWELL

## APPLICATION PROFILE



### RAIL SYSTEM REQUIRES MILES OF FIBERGLASS

Strongwell fiberglass products played an integral role in the construction of an eight-mile, \$1.5 billion commuter rail system that will connect New York City's existing transit systems with JFK International Airport.

Strongwell fiberglass third rail protection boards, tie extender brackets, SAFRAIL™ handrail and DURAGRID® T-5000 2" pultruded grating are being installed along a new elevated light rail system, dubbed AirTrain.

Approximately 100,000 feet of fiberglass protection board has been installed to cover the top of the railway's electric third rail. A collector arm extends from the train and connects to the third rail, providing power to the train. The protection board guards against stray current, insulates workers from the "live" rail and shields the rail from material dropped from trains and overpasses. 12,000 tie extender brackets were also installed to support the rail, molded brackets, and protection board.

Along with the protection board and tie extender brackets, more than 31,000 linear feet of SAFRAIL™ handrail and 700,000 square feet of DURAGRID® grating were installed along the tracks to create a safe walkway for maintenance workers and emergency egress for passengers.

Bill Roan, project coordinator for Strongwell partner Atlantic Track and Turnout Co., said that fiberglass products were chosen for the projects because of ease of installation, durability, long-term cost efficiency and non-conductivity.

"The non-conductivity of fiberglass is essential in a project such as this. The AirRail Transit Consortium came to us and specified that all products going into the line needed to be non-metallic," said Roan.

Engineers in Bristol worked with the AirRail Transit Consortium to custom design tie extender brackets that would be strong enough to meet the project's specifications.

### TECHNICAL DATA

Products:	Third Rail Protection Boards, Tie Extender Brackets, Grating and Handrail
Process:	Pultrusion
Materials:	Fiberglass custom shapes SAFRAIL™ handrail DURAGRID® T-5000 2" grating, gray
Sizes:	Collector Arm: 10" x 3" x 3/4" thick Third Rail Protection Board: 8-9/16" arc with multiple radii x 1/4" thick Handrail: 2-3/8" alternative post design with 2" top and midrail, various heights
For:	Atlantic Track and Turnout Co.

#### STRONGWELL



Bristol Division 400 Commonwealth Ave. Bristol, VA 24201-3820 USA (276) 645-8000 FAX: (276) 645-8132	Chatfield Division 1610 Highway 52 South Chatfield, MN 55923-9799 USA (507) 867-3479 FAX: (507) 867-4031
--	--

www.strongwell.com