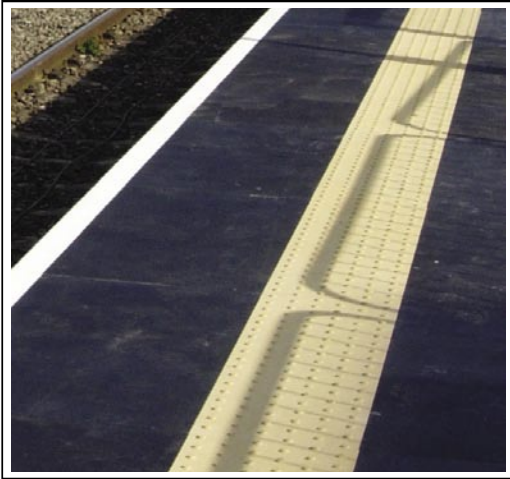


STRONGWELL

APPLICATION PROFILE



“STATE-OF-THE-ART” TRAIN STATION PLATFORMS USE STRONGWELL DECKING



A busy East Didsbury Train Station in Manchester, England has received a new look with Strongwell products. PIPEX Structural Composites Ltd., an international distributor of Strongwell products, helped the owner and operator of the United Kingdom’s rail infrastructure, Network Rail, revamp two existing concrete station platforms by supplying and fabricating a structural FRP deck over a new steel support frame.

Strongwell’s SAFPLATE® bonded to DURAGRID® pultruded grating, along with EXTREN® angle, were chosen to replace the surface of approximately 367 feet of concrete platforms at the station. The SAFPLATE® provided a non-slip, gridded walkway while maintaining the aesthetic properties of the station. The “state-of-the-art” installation also provided a gridded “bright white” edge and a tactile strip to aid visually impaired commuters.

Supply, fabrication and installation of the platforms were all cost-effective and time-saving. The destruction of the old concrete platform and the installation of the new steel deck with FRP surface went much easier and quicker than expected. Work was completed and the station reopened in seven weeks — right on schedule! The successful and speedy installation reduced disruption for travelers.

The platforms have a life expectancy of 60 years and were designed as a modular system that can be added to in the future. PIPEX Managing Director, Simon Eves said, “The use of structural composites for this application marked a major milestone for Network Rail and PIPEX was proud to be chosen for the design, fabrication and installation of the new station deck.”

Network Rail’s regional General Manager, Jo Kay said, “It is a tribute to the hard work and dedication of all parties involved that the first phase of work was completed on time and on budget.” With such success, plans for similar renovations within the Manchester line are currently underway.

TECHNICAL DATA

Product:	FRP Platforms
Process:	Pultrusion
Materials:	SAFPLATE® fiberglass reinforced polyester plate EXTREN® series 525 fiberglass reinforced polyester angle DURAGRID® fiberglass reinforced polyester grating
For:	PIPEX Structural Composites Ltd.
User:	East Didsbury Train Station Manchester, England



STRONGWELL
International Business Group
400 Commonwealth Ave.
Bristol, VA 24201-3820 USA
PHONE: +1 276 645 8000
FAX: +1 276 645 8132
www.strongwell.com

APPLICATION PROFILE 1006

FRP PLATFORMS FOR TRAIN STATION

