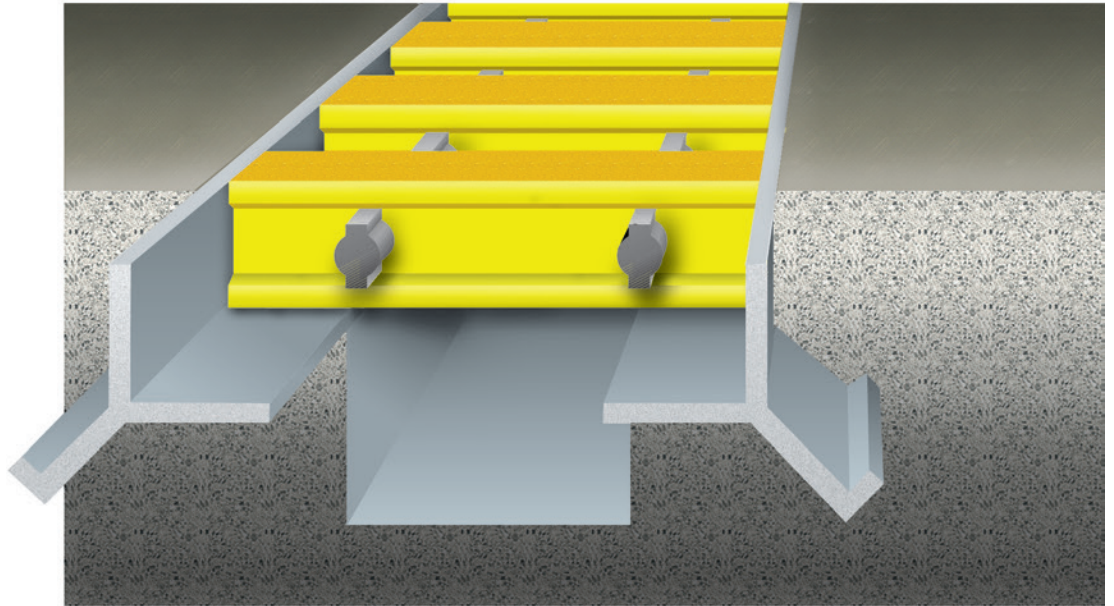
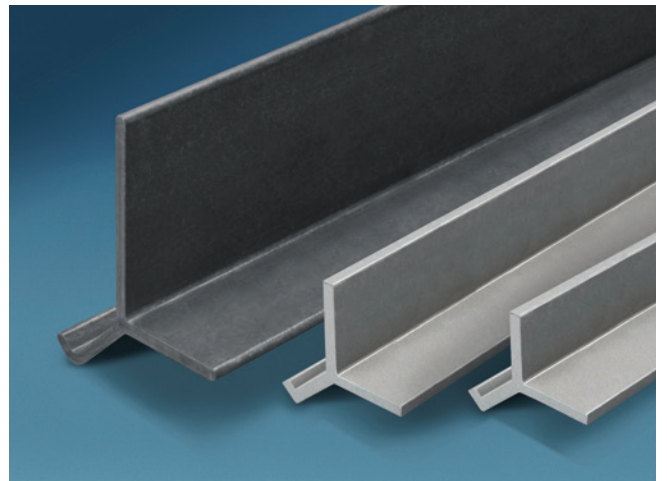


## FIBERGLASS CURB ANGLE

FOR USE WITH DURADEK®, DURAGRATE® AND DURAGRID®  
GRATING, CUSTOM DECKING AND COVER PROFILES



- **Corrosion Resistant**
- **Low Conductivity**
- **High Strength**
- **Fire Retardant**
- **Easy to Install**



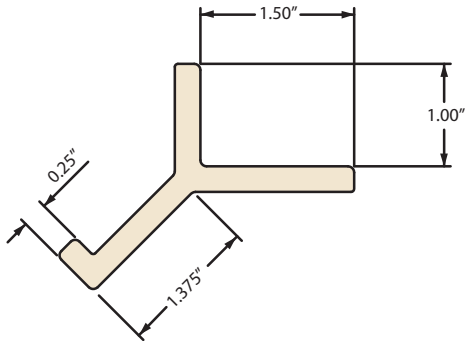
Strongwell's curb angle has a built-in, continuous angle that locks into concrete, eliminating the need for individual anchors.

Fiberglass curb angle is engineered using a surfacing veil and fire retardant gray vinyl ester, except for the 4", which is a fire retardant slate gray vinyl ester. This unique combination produces the superior strength, stiffness, wear protection and long-term corrosion resistance. Curb angle is available in 20' length.

## Availability

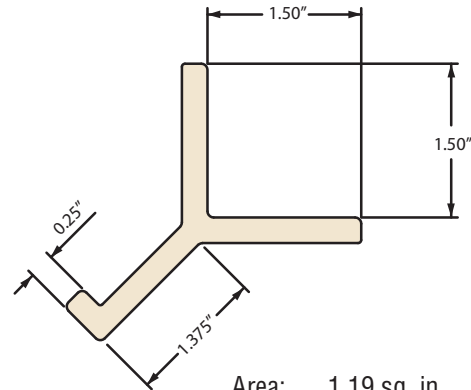
Fiberglass curb angle is available in four sizes. Other sizes can be custom manufactured. Contact Strongwell or ask your local distributor about availability.

### 1" Curb Angle



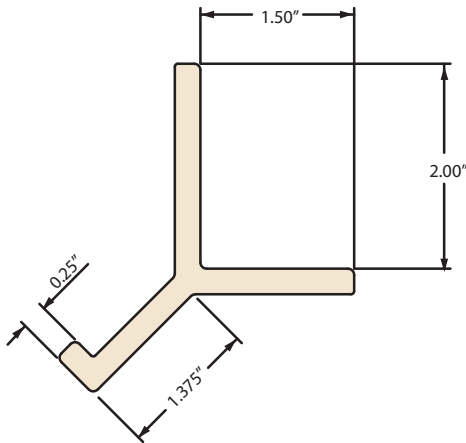
Area: 1.06 sq. in.  
Weight: 0.88 lbs./ft.

### 1½" Curb Angle



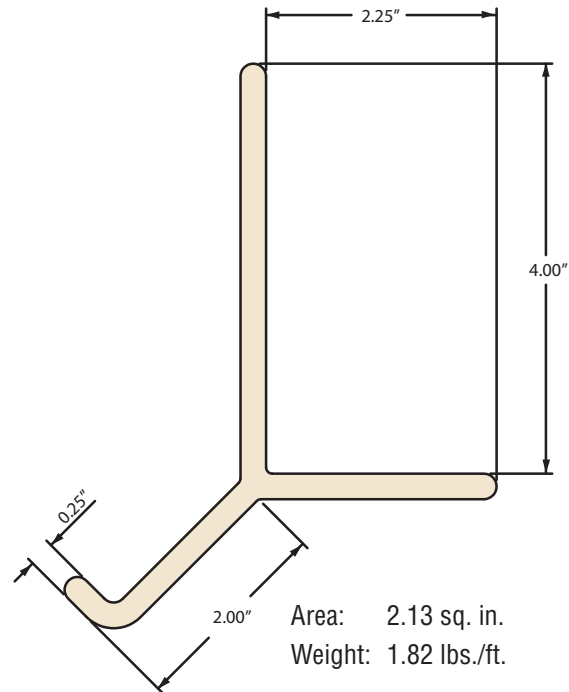
Area: 1.19 sq. in.  
Weight: 0.98 lbs./ft.

### 2" Curb Angle



Area: 1.31 sq. in.  
Weight: 1.09 lbs./ft.

### 4" Curb Angle



Area: 2.13 sq. in.  
Weight: 1.82 lbs./ft.



ISO-9001 Quality Certified Manufacturing Plants



#### BRISTOL LOCATION

400 Commonwealth Ave., P.O. Box 580, Bristol, VA 24203-0580 USA  
(276)645-8000

#### CHATFIELD LOCATION

1610 Highway 52 South, Chatfield, MN 55923-9799 USA  
(507)867-3479

[www.strongwell.com](http://www.strongwell.com)

ST1116  
© 2016 Strongwell