

PROFILE

SPRING
2006

Newsmaker:

COMPOSOLITE® Helps Electric Utility Reach Environmental Compliance

Strongwell has been making news with its newest innovation, the COMPOSOLITE® oil containment system for American Electric Power. The fabricated system featuring COMPOSOLITE® structural panels and EXTREN® square tubing and plate has allowed AEP to maintain compliance with a recent Environmental Protection Agency mandate relating to secondary containment.

The EPA's Spill Prevention Control Countermeasure (SPCC) mandate states that utilities must take steps to prevent "reasonable potential" of an oil spill reaching navigable water. AEP responded to the mandate by searching for a new ecological, economical, and sensible solution that would help the utility comply with the SPCC mandate most efficiently.

Previously, AEP had used poured-in-place concrete containment systems around its oil-filled substation equipment. The concrete was labor intensive, expensive and extremely difficult to install in remote or mountainous locations and could not be installed in freezing weather. AEP also used earth berm dikes, but they blocked access to equipment and made maintenance difficult.

Strongwell's collaboration with AEP resulted in the development of the lightweight COMPOSOLITE® secondary containment system, which is corrosion and UV resistant, strong, low in thermal and electrical conductivity, cost effective and easy to install. As shown by burn tests conducted by a local fire department and witnessed by AEP personnel, the system also withstands exposure to direct flame without leaking any contents.



Installation of the COMPOSOLITE® secondary containment system requires approximately half the man hours of a concrete system and no special equipment is needed, resulting in significant time and cost savings. The system is delivered in a kit form to job sites and includes drill bits, adhesive and fasteners—everything needed for assembly.

The COMPOSOLITE® secondary containment system is now AEP's "preferred method of replacement" of containment systems. In fact, the system was featured in the November 2005 issue of *Transmission & Distribution World* magazine because of its success.

Strongwell has produced close to 50 of these new COMPOSOLITE® secondary containment systems for AEP. Ken Posey, an AEP engineer, stated the partnership between AEP and Strongwell on this project produced a "win-win situation for both." The system has attracted two new utility customers this year. With the COMPOSOLITE® secondary containment system's success, it could possibly become a standard in the utility industry. ●



INSIDE:

- **Fiberglass – best choice for new wastewater treatment plant**
- **DURAGRATE® serves as unique fencing material**
- **GRIDFORM™ receives industry recognition**
- **Hubbell buys Strongwell's polymer concrete division**
- **DURATREAD® withstands heavy foot traffic at national park**
- **SAFSTRIP® and DURAGRID® I-6500 introduced**
- **Strongwell People**

Corporate Offices and Bristol Division

400 Commonwealth Ave., P.O. Box 580
Bristol, VA 24203-0580 USA
(276) 645-8000, FAX (276) 645-8132

Chatfield Division

1610 Highway 52 South
Chatfield, MN 55923-9799 USA
(507) 867-3479, FAX (507) 867-4031

Highlands Division

26770 Newbanks Road
Abingdon, VA 24211 USA

www.strongwell.com



STRONGWELL

Quarterly Newsletter from
Strongwell Corporation
© Strongwell 2006

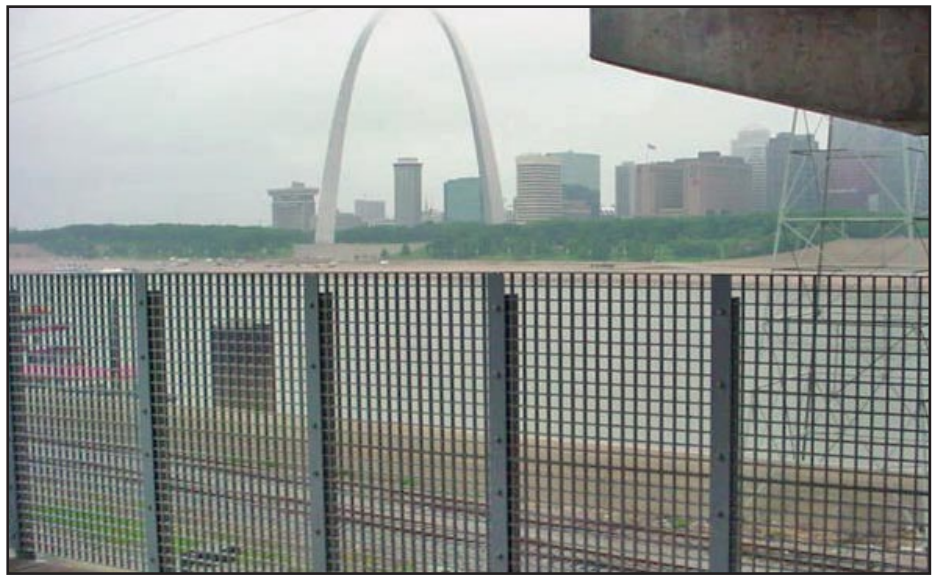
Case History: DURAGRATE®

Strongwell Assists St. Louis Metro with Huge Fencing Project

Metro, the transportation authority that serves the St. Louis, Missouri metropolitan area, recently undertook two large fencing installations utilizing custom DURAGRATE® molded grating as the main fencing component.

After previous success with custom fabricated train-stop windscreens provided by Strongwell, Metro contacted the company again in search of a corrosion resistant, maintenance-free fencing material that would be used to span the entire county. Various forms of fencing—mostly customized steel—had been installed previously, and the different fences created an inconsistent appearance. Rust and peeled paint made the fencing an even bigger eye sore, and poor construction in places allowed curious pedestrians to get past the metal fence into restricted areas.

Metro needed a functional fence that would keep pedestrians out but be aesthetically pleasing and not detract from the natural landscape. Working in conjunction with the Westfall Company, Strongwell's manufacturers' representative for the St. Louis area, project managers were able to develop an attractive yet corrosion- and maintenance-



free fencing design using black and gray DURAGRATE® molded grating panels. Extra care was taken in choosing the material used in the county-wide project. Strongwell's black and gray DURAGRATE® molded grating was chosen because of its clean, attractive look, strength and corrosion resistance.

Strongwell and Westfall first provided material to replace all the steel fencing

on the Metro's existing transit line. Terry Turner at Westfall Company says that, "Metro is very pleased with the integrity of the new railing."

Strongwell is now providing molded grating for the Metro's new Cross County Extension project, which is still under construction. Once in operation, though, passengers will enjoy the aesthetic appeal of miles of DURAGRATE® fencing! ●

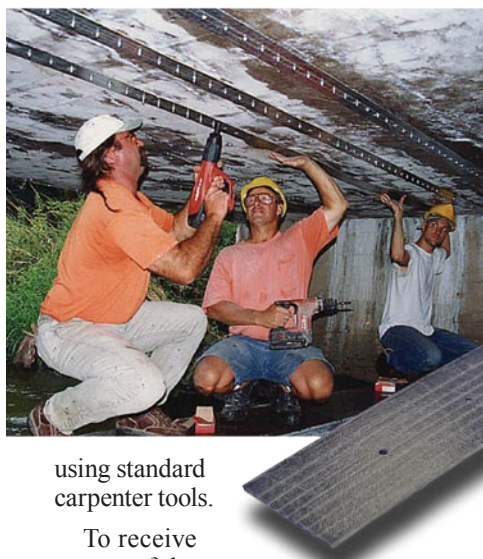
New Product News

SAFSTRIP® Introduced

Strongwell is pleased to introduce the SAFSTRIP® fiber reinforced building strip as its newest product offering.

SAFSTRIP® is a pultruded carbon/glass composite strip that improves the strength of an existing structural member when mechanically fastened to the structure. SAFSTRIP® has high bearing and longitudinal properties and is designed to strengthen the flexural capacity on the tension face of concrete girders, slabs and decks.

SAFSTRIP® measures 4" wide x 1/8" thick is supplied in rolls up to 100 ft. long. It may be pre-drilled with holes at the required fastener spacing to receive fasteners, but it can be easily field drilled or cut by the customer into shorter lengths



using standard carpenter tools.

To receive a copy of the new SAFSTRIP® brochure, contact Strongwell's Media Center at (276) 645-9094 or send an email with your request to mediacenter@strongwell.com. You may also view a PDF of the flyer in the Literature Library section of Strongwell's website at www.strongwell.com. ●

Literature Update

Expanded DURAGRATE® Brochure Available

Strongwell's DURAGRATE® molded grating product brochure has been expanded to accommodate load tables for two new grating sizes. Readers will now find a load table for Strongwell's new 1-1/2" thick 3/4" square mesh grating as well as for the 1-1/2" thick 6" rectangular grating.

To request your copy of the brochure, please call Strongwell's Media Center at (276) 645-8094 or send an email with your request to mediacenter@strongwell.com. You may also view a PDF of the brochure in the Literature Library section of Strongwell's website at www.strongwell.com. ●



Case History: Fabrication

Fajardo, Puerto Rico Waste Water Treatment Plant



The Fajardo Waste Water Treatment Plant in Fajardo, Puerto Rico, was recently outfitted with a huge variety of fiberglass structural components from Strongwell.

The new facility features solid covers, odor control covers, ladders and handrail, various equipment enclosures, pipe bridges, pipe supports, and numerous cross-over platforms. Each structure was fabricated using EXTREN® beams, SAFRAIL™ square handrail and SAFPLANK® fiberglass decking.

The project was originally designed, engineered and bid to contractors

using aluminum in the specifications. However, concerns such as pilfering of the recyclable metal in the remote area and resistance to corrosive chemicals presented themselves and project managers decided to look for an alternative. Strongwell was able to take the specifications and produce a cost-competitive FRP solution, thereby solving both problems.

Along with being cost efficient, corrosion resistant and non-recyclable, the project managers were pleased that the FRP platforms, supports, handrails and covers could all be purchased from a single manufacturer. ●

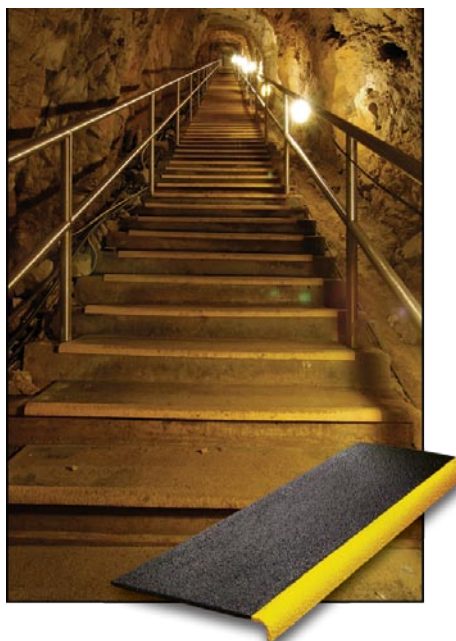
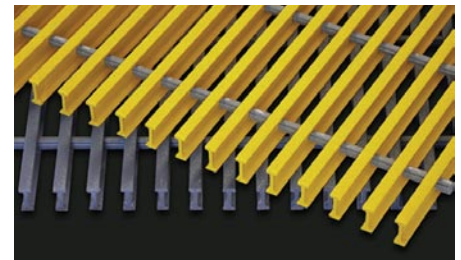
Newsmakers

DURAGRID® I-6500 1-½” Pultruded Grating Recently Introduced

DURAGRID® I-6500 1-½”, a series of pultruded grating specifically designed to offer a price competitive alternative to 1-½” square molded grating, was recently introduced by Strongwell.

DURAGRID® I-6500 1-½” pultruded grating is much stronger than its molded grating counterpart, yet is competitively priced at or even below the price of the molded grating. This gives molded grating customers a great opportunity to experience the superior performance of pultruded grating without going over budget to do so.

For more information DURAGRID® I-6500 1-½”, please contact Strongwell’s Media Center at mediacenter@strongwell.com or call (276) 645-8094 to request a copy of the product flyer. You may also view a PDF of the flyer in the Literature Library section of Strongwell’s website at www.strongwell.com. ●



Case History: DURATREAD®

DURATREAD® Saves National Park Time, Money in Stair Renovation

Strongwell’s DURATREAD® stair tread covers were vital to the recent renovation of a flight of stairs at Kentucky’s Mammoth Cave National Park.

Heavy traffic and old age contributed to the wear of 185 rock and concrete stairs in a frequently visited cave. The park initially considered removing the stairs and replacing them with a stainless steel or fiberglass stringer and stair tread system. However, DURATREAD® stair tread covers ultimately offered a much more effective approach, allowing the park to keep the stairs and save time and money in the process.

DURATREAD® stair tread covers were installed over the worn concrete and rock stairs and were a perfect fit. Featuring extremely durable, skid resistant aluminum oxide grit, the stair tread covers will ensure a much longer life for the stairs.

Mammoth Cave National Park was so pleased with DURATREAD® that other possible specification assistance from Strongwell has been requested. The project has also drawn the attention of other national parks and has generated interest in applications utilizing Strongwell’s SAFPLATE® gritted plate and COMPOSOLITE® structural building panel system. ●

Strongwell People

Dan Smith

Bristol/Chatfield Regional Sales Manager



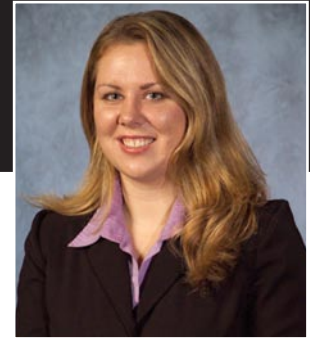
Strongwell welcomes Dan Smith its newest Regional Sales Manager for pultruded products. Dan's territory includes Michigan, Ohio, Indiana, West Virginia, and Virginia.

Dan comes to Strongwell from Rudolph Brothers & Company of Columbus, Ohio. He also was previously employed by the Westfall Company, a long-time Strongwell representative, and brings extensive knowledge of Strongwell's products to his new position.

Dan holds a bachelors degree in Marketing from Southeast Missouri State University. His office is located in Haslett, Michigan, where he lives with his wife, Ann Marie, and two children, Beth and Carl. ●

Amber Clark

Marketing Specialist



Amber Clark has accepted the position of Marketing Specialist for Strongwell. Her primary responsibilities include the development and production of literature, advertising, newsletters, videos and other multimedia projects for Strongwell.

Amber is a graduate of Lincoln Memorial University and holds a B.A. in Communication Arts with a minor in Art. Before joining the Strongwell team, she worked as a video design specialist for Ruby Tuesday, Inc., in Maryville, Tennessee, where she produced training/marketing videos and literature.

Amber and her husband, Champ, reside in Chilhowie, Virginia. ●

Newsmaker: GRIDFORM™

GRIDFORM™ Bridge Decking Receives Industry Recognition



Strongwell's new GRIDFORM™ concrete reinforcement system is an award winning product! The second generation of this innovative double layer grating system, which was developed in partnership with civil engineers at the University of Wisconsin - Madison, recently received a "Best of What's New" award in engineering from *Popular Science* magazine. In addition, the current generation of the system, which features 1/8" fiberglass plate bonded to the bottom grating panel, was declared runner-up for the prestigious Charles Pankow Award for Innovation given in April 2006 by the American Society of Civil Engineers.

The GRIDFORM™ system is composed of two layers of DURAGRID® pultruded fiberglass grating panels bonded to EXTREN® plate and separated by shear connectors with nylon bolts. The system is designed to replace metal rebar and serve

as a stay-in-place concrete form for bridge decks. GRIDFORM™ will not corrode and therefore greatly extends the lifespan of the bridge deck in which it is installed. The prefabricated system also saves time and money during installation because it is installed in sections as opposed to traditional rebar, which workers have to place and tie together by hand.

Strongwell thanks UWM professors Michael Oliva and Larry Bank and former graduate students David Jacobson and Mack Conachen for working with the company to develop this ground breaking product! ●

Strongwell Update:

Hubbell Buys Strongwell Polymer Concrete Division

On June 1, 2006, Strongwell completed the sale of its polymer concrete business to Hubbell Incorporated. The sale of Strongwell Lenoir City Incorporated included the company's two polymer concrete plants in San Jose, California and Lenoir City, Tennessee. The sale does not impact Strongwell Corporation, which specializes in pultrusion of fiber reinforced polymers at its manufacturing facilities in Bristol, Virginia; Washington County, Virginia (Highlands); and Chatfield, Minnesota.

Strongwell wishes the new Hubbell Lenoir City, Inc. and its QUAZITE® and POLYCAST® brands much continued success as part of its new Hubbell family!

The Strongwell *Profile* newsletter is published quarterly by the Strongwell Corporate Marketing Department. To receive a free subscription to this newsletter, write to the Corporate Offices of Strongwell on your company letterhead.

Editors: Anna Lone, Amber Clark Production: Amber Clark