



AVAILABILITY LIST

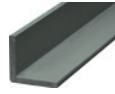
(IMPERIAL)

- EXTREN® Structural Shapes and Plate..... 2
- Special Composite Shapes 4
- DURADEK® Pultruded Grating..... 6
- DURAGRATE® Molded Grating 8
- DURATREAD™ Molded Stair Tread Covers..... 9
- SAFRAIL™ Industrial Railing Systems..... 9
- CUSTOM Handrail Systems 10
- Baffle Wall Panels 11
- COMPOSOLITE® Building Panel System 11
- DURASHIELD® Foam Core Building Panel System 11
- DURASHIELD HC® Hollow Core Building Panel System..... 11
- SAFPLANK® Interlocking Decking System 12
- SAFDECK® Overlapping Decking System 12
- STRONGDEK™ Architectural Decking System 12
- FIBREBOLT® Studs and Nuts 12
- HS ARMOR PANEL Ballistic Panel..... 13
- General Information 14

EXTREN®

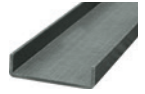
FIBERGLASS STRUCTURAL SHAPES & PLATE

ANGLE



SIZES IN INCHES	LENGTH IN FEET	SERIES 500	SERIES 525	SERIES 625	LBS. PER LIN. FT.
1 x 1/8	20	STOCKED	STOCKED	STOCKED	0.18
1-1/4 x 1/8	20	NS	NS	NS	0.11
1-1/4 x 3/16	20	STOCKED	STOCKED	NS	0.35
1-1/2 x 1/8	20	NS	STOCKED	NS	0.28
1-1/2 x 3/16	20	NS	NS	NS	0.41
1-1/2 x 1/4	20	STOCKED	STOCKED	STOCKED	0.50
2 x 1/8	20	NS	NS	NS	0.37
2 x 3/16	20	STOCKED	STOCKED	NS	0.56
2 x 1/4	20	STOCKED	STOCKED	STOCKED	0.73
2-5/8 x 1-5/8 x 3/16	20	NS	NS	NS	0.61
3 x 1/4	20	STOCKED	STOCKED	STOCKED	1.07
3 x 3/8	20	STOCKED	STOCKED	STOCKED	1.66
3 x 1 x 3/16	20	NS	NS	NS	0.67
4 x 1/4	20	STOCKED	STOCKED	STOCKED	1.54
4 x 3/8	20	STOCKED	STOCKED	STOCKED	2.31
4 x 1/2	20	NS	STOCKED	STOCKED	2.86
4-5/8 x 1-5/8 x 3/16	20	NS	NS	NS	0.91
4 x 1-1/8 x 3/16	20	NS	NS	NS	0.82
5 x 1/2	20	NS	NS	NS	3.74
6 x 1/4	20	NS	STOCKED	NS	2.35
6 x 3/8	20	NS	STOCKED	NS	3.44
6 x 1/2	20	STOCKED	STOCKED	STOCKED	4.64
6-5/8 x 1-5/8 x 3/16	20	NS	NS	NS	1.21
6 x 1-5/8 x 3/16	20	NS	NS	NS	1.12
8-5/8 x 1-5/8 x 3/16	20	NS	NS	NS	1.42

CHANNEL



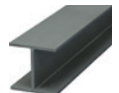
SIZES IN INCHES	LENGTH IN FEET	SERIES 500	SERIES 525	SERIES 625	LBS. PER LIN. FT.
1-1/2 x 1 x 3/16	20	NS	NS	NS	0.46
1-1/2 x 1-1/2 x 1/4	20	NS	STOCKED	NS	0.75
2 x 9/16 x 1/8	20	STOCKED	STOCKED	NS	0.28
2 x 7/8 x 1/4	20	NS	NS	NS	0.62
2-5/8 x 1/8 x 1-1/4 x 3/16	20	NS	NS	NS	0.62
3 x 7/8 x 1/4	20	STOCKED	STOCKED	STOCKED	0.77
3 x 1 x 3/16	20	NS	NS	NS	0.68
3 x 1-1/2 x 1/4	20	NS	NS	NS	1.06
3-1/2 x 1-1/2 x 3/16	20	NS	STOCKED	NS	0.90
4 x 1-1/16 x 1/8	20	NS	NS	NS	0.58
4 x 1-1/8 x 1/4	20	STOCKED	STOCKED	NS	1.11
4 x 1-3/8 x 3/16	20	STOCKED	STOCKED	STOCKED	0.94
5 x 1-3/8 x 1/4	20	NS	NS	NS	1.4
5-1/2 x 1-1/2 x 3/16	20	NS	STOCKED	NS	1.19
5-1/2 x 1-1/2 x 1/4	20	NS	STOCKED	NS	1.47
6 x 1-5/8 x 3/16	20	NS	NS	NS	1.12
6 x 1-5/8 x 1/4	20	STOCKED	STOCKED	STOCKED	1.68
6 x 1-11/16 x 3/8	20	NS	STOCKED	NS	2.46
8 x 2-3/16 x 1/4	20	NS	STOCKED	NS	2.32
8 x 2-3/16 x 3/8	20	STOCKED	STOCKED	STOCKED	3.41
10 x 2-3/4 x 1/2	20	NS	STOCKED	STOCKED	5.50
10 x 2-3/4 x 1/2	24	NS	STOCKED	STOCKED	6.09
12 x 3 x 1/2	20	NS	NS	NS	5.67
12 x 3 x 1/2	24	NS	STOCKED	STOCKED	6.86
14 x 3-1/2 x 3/4	20	NS	NS	NS	11.21
18 x 2-3/16 x 3/16	20	NS	NS	NS	3.95
24 x 3 x 1/4	20	NS	NS	NS	6.16

I-BEAM



SIZES IN INCHES	LENGTH IN FEET	SERIES 500	SERIES 525	SERIES 625	LBS. PER LIN. FT.
2 x 1 x 1/8	20	NS	NS	NS	0.34
3 x 1-1/2 x 1/4	20	NS	NS	NS	1.11
4 x 2 x 1/4	20	STOCKED	STOCKED	STOCKED	1.48
5-1/2 x 2-1/2 x 1/4	20	NS	STOCKED	NS	2.00
6 x 3 x 1/4	20	NS	STOCKED	NS	2.31
6 x 3 x 3/8	20	NS	NS	NS	3.39
6 x 4 x 1/4	20	NS	NS	NS	3.20
8 x 4 x 3/8	20	STOCKED	STOCKED	NS	4.61
8 x 4 x 1/2	20	NS	NS	NS	6.03
10 x 5 x 3/8	20	NS	NS	NS	5.78
10 x 5 x 1/2	20	NS	STOCKED	NS	7.54
12 x 6 x 1/2	20	NS	STOCKED	STOCKED	9.34
12 x 6 x 1/2	24	NS	STOCKED	STOCKED	9.67
18 x 3/8 x 4-1/2 x 1/2	20	NS	NS	NS	8.52
24 x 3/8 x 7-1/2 x 3/4	24	NS	STOCKED	NS	15.77

WIDE FLANGE BEAM



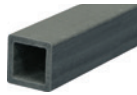
SIZES IN INCHES	LENGTH IN FEET	SERIES 500	SERIES 525	SERIES 625	LBS. PER LIN. FT.
2 x 1/8	20	NS	NS	NS	0.52
3 x 1/4	20	STOCKED	STOCKED	NS	1.69
4 x 1/4	20	STOCKED	STOCKED	STOCKED	2.22
4 x 3/8	20	NS	NS	NS	3.32
6 x 1/4	20	STOCKED	STOCKED	STOCKED	3.52
6 x 3/8	20	STOCKED	STOCKED	STOCKED	5.13
8 x 3/8	20	NS	STOCKED	STOCKED	6.97
8 x 1/2	20	NS	STOCKED	STOCKED	9.23
10 x 3/8	20	NS	NS	STOCKED	8.78
10 x 3/8	32	NS	STOCKED	STOCKED	6.92
10 x 1/2	20	NS	NS	NS	11.88
12 x 1/2	20	NS	NS	NS	13.98
12 x 1/2	24	NS	NS	STOCKED	13.98

Series 500 - Polyester resin, olive green
 Series 525 - Polyester resin, flame retardant, slate gray
 Series 625 - Vinyl Ester resin, flame retardant, beige

Items are non-stocked items

NOTE: Inventory of nonstocked items may be available due to overruns.

SQUARE TUBE



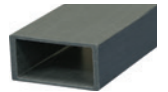
SIZES IN INCHES	LENGTH IN FEET	SERIES 500	SERIES 525	SERIES 625	LBS. PER LIN. FT.
1 x 1/8	20	STOCKED	STOCKED	NS	0.33
1-1/4 x 1/8	20	NS	NS	NS	0.41
1-1/2 x 1/8	20	STOCKED	STOCKED	NS	0.55
1-1/2 x 1/4	20	NS	NS	NS	0.98
1-3/4 x 1/8	20	NS	NS	NS	0.64
1-3/4 x 1/4	20	NS	NS	NS	1.19
2 x 1/8	20	NS	STOCKED	NS	0.74
2 x 1/4 ‡	20	STOCKED	STOCKED	STOCKED	1.40
2-1/2 x 1/4	20	NS	NS	NS	1.79
3 x 1/8	20	NS	NS	NS	1.16
3 x 1/4	20	STOCKED	STOCKED	STOCKED	2.20
3 x 3/8	20	NS	NS	NS	3.20
3-1/2 x 1/4	20	NS	STOCKED	STOCKED	2.47
4 x 1/4	20	STOCKED	STOCKED	STOCKED	3.08
4 x 3/8	20	NS	NS	NS	4.40
6 x 3/8	20	NS	STOCKED	NS	6.58

ROUND TUBE



SIZES IN INCHES	LENGTH IN FEET	SERIES 500	SERIES 525	SERIES 625	LBS. PER LIN. FT.
1 x 1/8	20	NS	NS	NS	0.25
1-1/4 x 1/8	20	NS	NS	NS	0.32
1-1/2 x 1/8	20	NS	NS	NS	0.45
1-1/2 x 1/4	20	NS	NS	NS	0.79
1-3/4 x 1/8	20	NS	NS	NS	0.47
1-3/4 x 1/4	20	NS	NS	NS	0.94
2 x 1/8	20	NS	NS	NS	0.60
2 x 1/4	20	STOCKED	STOCKED	NS	1.10
2-1/2 x 1/4	20	STOCKED	STOCKED	NS	1.43
3 x 1/4	20	NS	NS	NS	1.70
3-1/2 x .140	20	NS	NS	NS	1.21
4 x 1/4	20	NS	NS	NS	2.36
5 x 1/4	20	NS	NS	NS	3.08
6 x 1/8	20	NS	NS	NS	1.84
6 x 1/4	20	NS	NS	NS	3.76

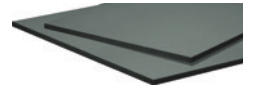
RECTANGULAR TUBE



SIZES IN INCHES	LENGTH IN FEET	SERIES 500	SERIES 525	SERIES 625	LBS. PER LIN. FT.
2-1/2 x 1-5/8 x 1/8	20	NS	NS	NS	0.74
4 x 1/8 x 2 x 1/4	20	STOCKED	STOCKED	NS	1.52
3-1/2 x 5-1/2 x 1/4	20	NS	STOCKED	NS	3.35
6-1/2 x 1/4 x 2 x 1/2	20	NS	NS	NS	3.77
7 x 4 x 1/4	20	NS	NS	NS	4.21
9 x 6 x 5/16	20	NS	NS	NS	6.91
9 x 6 x 7/16	20	NS	NS	NS	9.59

PLATE

EXTREN® plate is a stocked item and is usually available on short notice. Stock size is 48" x 96". 60" wide plate is also available, non-stocked. Other sizes are available and will be quoted upon request.



THICKNESS IN INCHES	SERIES 500	SERIES 525	SERIES 625	LBS. PER SQ. FT
1/8	STOCKED	STOCKED	STOCKED	1.14
3/16	STOCKED	STOCKED	NS	1.71
1/4	STOCKED	STOCKED	STOCKED	2.34
3/8	STOCKED	STOCKED	NS	3.86
1/2	STOCKED	STOCKED	STOCKED	4.68
5/8	NS	NS	NS	5.79
3/4	STOCKED	STOCKED	STOCKED	6.94
1	NS	STOCKED	STOCKED	9.27

‡ Also stocked in Series 525 yellow
 ■ Items are non-stocked items

Series 500 - Polyester resin, olive green
 Series 525 - Polyester resin, flame retardant, slate gray
 Series 625 - Vinyl Ester resin, flame retardant, beige

NOTE: Inventory of nonstocked items may be available due to overruns.

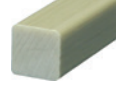
EXTREN TC® ROD AND BAR

THERMAL CURE ROD AND BAR is produced using all longitudinal reinforcements with low speed and high temperature, which provides a rich surface appearance. It has no surfacing veil, no pigment and is not fire retardant. On request, Strongwell can quote special formulations including resin type, fire retardant properties, etc. Because it maintains high electrical standards, thermal cure rod is most commonly specified for electrical applications. Normally stocked for prompt delivery. *Thermal cure rod and bar was not designed to be machined.*

ROUND ROD*



SQUARE ROD*



SIZES IN INCHES	THERMAL CURE	LBS. PER LIN. FT.
1/4	STOCKED	0.04
5/16	STOCKED	0.07
3/8	STOCKED	0.10
1/2	STOCKED	0.17
5/8	STOCKED	0.27
3/4	STOCKED	0.39
13/16	NS	0.45
7/8	NS	0.53
1	STOCKED	0.69
1-1/8	NS	0.87
1-1/4	NS	1.08
1-1/2	STOCKED	1.52
2	NS	2.81

SIZES IN INCHES	THERMAL CURE	LBS. PER LIN. FT.
1/2	STOCKED	0.22
5/8	STOCKED	0.34
3/4	NS	0.49
1	STOCKED	0.87
1-1/4	NS	1.31
1-1/2	STOCKED	1.95

Sizes 3/4" diameter and smaller will be stocked in Chatfield, MN

SPECIAL COMPOSITE SHAPES

(SPECIAL COMPOSITE DESIGN — NOT EXTREN® COMPOSITE)

All Special Composite Shapes are Non-stocked items unless otherwise noted.

Tooling is available for the following special non-stocked items

	PE	PE/FR	VE/FR	LBS. PER LIN. FT.
TOP RAIL				
2 x 1/4 Modified Rd Tube	NS	NS	NS	1.29
FLIGHT CHANNEL				
5-1/2 x 1/8 x 2-1/2 x 3/16	NS	NS	NS	1.58
7-1/8 x 1/8 x 2-1/2 x 3/16	NS	NS	NS	1.62
CHANNEL				
3-1/2 x 2 x 7/32	NS	STOCKED	NS	1.38
1.875 x 0.125 x 1.125 x 0.188**	NS	NS	NS	0.48
3.290 x 0.128 x 1.180 x 0.190**	NS	NS	NS	0.65
3.310 x 0.135 x 1.187 x 0.210**	NS	NS	NS	0.69
4.000 x 0.125 x 1.750 x 0.187**	NS	NS	NS	0.94
STRUT				
1-5/8 x 1-5/8 x 5/32 - Type 1	NS	NS	NS	0.65
1-5/8 x 1-5/8 x 5/32 - Type 2	NS	NS	NS	0.70
1-5/8 x 1-5/8 x 5/32 - Double Strut	NS	NS	NS	1.25
1-5/8 x 1 x 5/32	NS	NS	NS	0.51
1-5/8 x 1 x 5/32 - Double Strut	NS	NS	NS	0.89

All items are stocked in 20 foot lengths unless otherwise noted

Items are non-stocked items

* Special Composite Design - Not EXTREN® Composite

** Non-stocked item; standard color - orange

SPECIAL COMPOSITE SHAPES

(SPECIAL COMPOSITE DESIGN — NOT EXTREN® COMPOSITE)

All Special Composite Shapes are Non-stocked items unless otherwise noted.

Tooling is available for the following special non-stocked items

	PE	PE/FR	VE/FR	LBS. PER LIN. FT.
□ SQUARE TUBE/ROUND HOLE				
1" Sq. with 3/4" Rd. Hole - Type 1	NS	NS	NS	0.49
1" Sq. with 3/4" Rd. Hole - Type 2	NS	NS	NS	0.49
▯ SLIDE GUIDE				
2-1/2 x 2-1/4 x 1/4	NS	NS	NS	1.13
└ ANGLE				
1-3/4 x 1-1/4 x 1/4	NS	NS	NS	0.53
10-1/2 x 10-1/2 x 1-1/4	NS	NS	NS	20.80
— FLAT STRIP				
2 x 3/16*	NS	STOCKED	STOCKED	0.22
2 x 1/4	NS	NS	NS	0.39
3 x 3/16	NS	NS	NS	0.41
3 x 1/4	NS	STOCKED	NS	0.59
3 x 3/8	NS	NS	NS	0.90
3 x 1/2	NS	STOCKED	NS	1.13
3-1/2 x 1/2	NS	NS	NS	1.35
4 x 3/8	NS	NS	NS	1.16
4 x 1/2	NS	NS	NS	1.64
5 x 0.058	NS	NS	NS	0.26
6 x 1/8	NS	NS	NS	0.58
6 x 1/4	NS	NS	NS	1.29
○ FLUTED TUBE				
1-1/4**	NS	NS	STOCKED	0.40
└ F-SECTION				
5-1/2 x 1 x 1/4***	NS	NS	NS	1.58
6 x 1-1/2 x 1/4	NS	NS	NS	1.69
└ Z-SECTION				
1-1/4 x 2-1/2 x 1/8	NS	NS	NS	0.49
└ CORNER POST				
3-1/4 x 1/4	NS	NS	NS	2.35

All items are stocked in 20 foot lengths unless otherwise noted

■ Items are non-stocked items

* Stocked item in yellow in 24' lengths

** Stocked item in yellow in 242" lengths

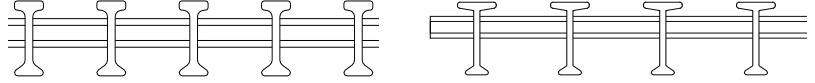
*** Stocked in Chatfield, MN

DURA-DEK®

PULTRUDED FIBERGLASS GRATING

STOCKING LEVELS OF GRATING MAY VARY. CALL FOR AVAILABILITY.

STANDARD SIZE PANELS



PANEL SIZE (WIDTH X LENGTH)	PE I-6500 - 1" VE I-6500 - 1"	PE I-6500 - 1-1/2" VE I-6500 - 1-1/2"	PE T-5800 - 2" VE T-5800 - 2"
	WT. (LBS.)	WT. (LBS.)	WT. (LBS.)
3' x 10'	66	81	-
3' x 20'	132	162	156
4' x 8'	70.4	86.4	-
4' x 12'	105.6	129.6	124.8
4' x 20'	176	216	208
5' x 10'	110	135	135
5' x 20'	220	270	260

Colors:	Yellow or Gray	UV Protection:	UV Inhibited with a Veil
Resins:	Fire Retardant Polyester - Standard	Top Surface:	Epoxy Bonded Grit Coating
	Fire Retardant Vinyl Ester - Optional	Cross Rods:	8" o.c.

DURA DEK®

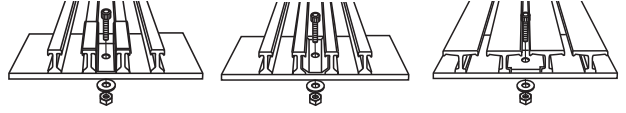
PULTRUDED FIBERGLASS GRATING

ACCESSORY ITEMS

ALL ITEMS GENERALLY ARE IN INVENTORY FOR IMMEDIATE SHIPMENT

PANEL HOLD DOWNS

(Price Does Not Include Nuts, Bolts & Washers)



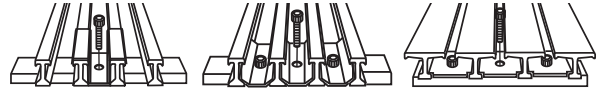
(No Broken Packages)

**LBS. APPROX.
(25 PER PACKAGE)**

S.S. Insert Hold Down, all series (Specify I-6500 or T-5800)	1.00
S.S. Saddle Clip Only, I-6500 - 1"	2.00
S.S. Saddle Clip Only, I-6500 - 1-1/2"	2.25
S.S. Saddle Clip Only, T-5800 - 2"	3.25
1/4" - 20 x 1-1/4" S.S. Socket Head Cap Screw with Nut & Washer (For use with Hold Downs)	0.75

PANEL CONNECTORS ASSEMBLY

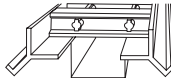
(Assembly includes Hold Down(s), Bolt(s) and Bottom Bar)



**LBS.
APPROX.**

S.S. Insert Panel Connector, all series	0.40
S.S. Saddle Clip Panel Connector, I-6500 - 1"	0.29
S.S. Saddle Clip Panel Connector, I-6500 - 1-1/2"	0.30
S.S. Saddle Clip Panel Connector, T-5800 - 2"	0.30

FIBERGLASS CURB ANGLE



	LENGTH IN FEET		LBS. APPROX. PER LIN. FT.
1" x 1-1/2"	20	STOCKED	0.83
1-1/2" x 1-1/2"	20	STOCKED	0.93
2" x 1-1/2"	20	STOCKED	1.03
4" x 2-1/4" x 1/4" (Slate Gray)	-	NS	5.33

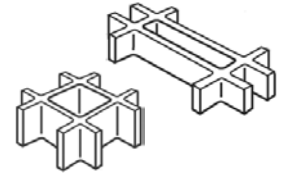
Color: Gray	UV Inhibited with a Veil
Resin: Fire Retardant, Vinyl Ester	

MISCELLANEOUS

	LBS. APPROX.
Sealing Kit - 1 pint	1.64
7" Tungston Carbide Tip Circular Blade	0.64
Tungston Carbide Tip Saber Saw Blade	0.03

DURAGRATE®

MOLDED FIBERGLASS GRATING



STOCKING LEVELS OF GRATING MAY VARY. CALL FOR PRICING, COLOR OPTIONS AND AVAILABILITY.

RESINS OPTIONS:

GP — GENERAL POLYESTER RESIN SYSTEM
PP — PREMIUM POLYESTER RESIN SYSTEM

VE — VINYL ESTER RESIN SYSTEM
FF — FOOD GRADE RESIN SYSTEM

THICKNESS	MESH	PANEL SIZE	ESTIMATED WEIGHT (LBS.)
1"	1" x 4"	3' x 10'	84
1"	1" x 4"	4' x 8'	90
1"	1" x 4"	4' x 12'	135
1"	1-1/2" x 1-1/2"	3' x 10'	78
1"	1-1/2" x 1-1/2"	4' x 8'	83
1"	1-1/2" x 1-1/2"	4' x 12'	125
1-1/2"	1-1/2" x 1-1/2"	3' x 10'	114
1-1/2"	1-1/2" x 1-1/2"	4' x 8'	122
1-1/2"	1-1/2" x 1-1/2"	4' x 12'	183
2"	2" x 2"	4' x 12'	192

STAIR TREAD*

1-1/2"	1-1/2" x 6"	22-1/2" x 10'	60
--------	-------------	---------------	----

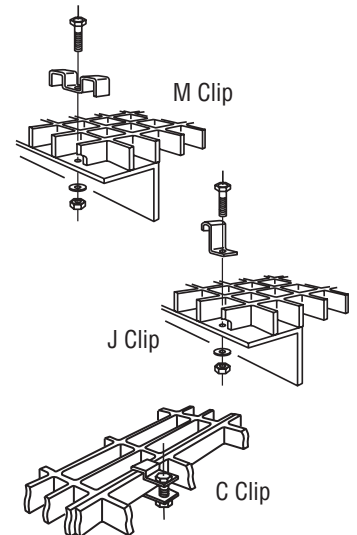
***NOTE: Nosing is gritted and same color as stair tread.**

• Other resins, colors and accessories available on special orders. Call factory for details.

ACCESSORY ITEMS

Item (No Broken Packages)

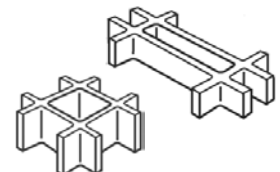
- Type M Clip for 1" x 1" x 4" Rectangular Mesh ② or ③
- Type M Clip for 1" x 1-1/2" Square Mesh ② or ③
- Type M Clip for 1-1/2" x 1-1/2" Square Mesh ⑤
- Type M Clip Deep for 1-1/2" x 1-1/2" Square Mesh or 1-1/2" x 6" Rectangular Mesh ④
- Type M Clip for 2" x 2" Square Mesh ⑥
- Type J Clip for 1" ①
- Type J Clip for 1-1/2" ①
- Type J Clip for 2" ①
- Type C Clip Assembly for 1"
- Type C Clip Assembly for 1-1/2"
- Type C Clip Assembly for 2"



(ALL CLIPS AND BOLTS S.S. 316)

Typical bolts to use for Clips:

- ① 1/4" x 1" Hex Head Cap Screw with Nut and Washer
- ② 1/4" x 1-1/2" Hex Head Cap Screw with Nut and Washer
- ③ 1/4" x 1-3/4" Hex Head Cap Screw with Nut and Washer
- ④ 1/4" x 1-1/4" Socket Head Cap Screw with Nut and Washer
- ⑤ 1/4" x 2" Hex Head Cap Screw with Nut and Washer
- ⑥ 1/4" x 2-1/2" Hex Head Cap Screw with Nut and Washer



DURATREAD™

MOLDED FIBERGLASS STAIR TREAD COVERS

STOCKING LEVELS MAY VARY. CALL FOR PRICING, COLOR OPTIONS AND AVAILABILITY.

RESINS OPTIONS:

GP — GENERAL POLYESTER RESIN SYSTEM VE — VINYL ESTER RESIN SYSTEM
 PP — PREMIUM POLYESTER RESIN SYSTEM FF — FOOD GRADE RESIN SYSTEM

TREAD (INCHES)	THICKNESS 1/8" WEIGHT (LBS.)	THICKNESS 1/4" WEIGHT (LBS.)
8	16	31
9	18	34
10	19	37
11	21	40
12	23	44

**All covers are 12' long. • No minimum on black with yellow nose covers. • The minimum order quantity for all other colors is 5 pieces.*

SAF RAIL™

INDUSTRIAL FIBERGLASS RAILING SYSTEMS

ALL ITEMS GENERALLY ARE IN INVENTORY FOR IMMEDIATE SHIPMENT

SQUARE RAILING SYSTEM COMPONENTS

COMPONENT	WEIGHT (LBS.)
2" x 2" x .156" Square Tube, Yellow Polyester Fire Retardant UV Inhibited @ 240"	0.95 / ft.
2-3/8" x 2-3/8" x 3/16" Square Tube, Yellow Polyester Fire Retardant UV Inhibited @ 240"	1.36 / ft.
4" Kickplate Yellow Polyester Fire Retardant UV Inhibited @ 240"	0.65 / ft.
6" Kickplate Yellow Polyester Fire Retardant UV Inhibited @ 240" (1,200 ft. mill run)	0.73 / ft.
Black End Caps	0.03 ea.
Adjustable Corner Assembly (Total Assembly)	0.36 ea.
90° Corner Plug	0.35 ea.
Kickplate Splice	0.11 ea.
Kickplate 90° Splice	0.15 ea.
Split Tube 8" Length (for square handrail)	0.35 ea.
Split Tube 4" Length (for square handrail)	0.18 ea.
Split Tube 144" Length (for square handrail)	6.12 ea.
6" Square Plug	0.76 ea.
Square Plug 144" Length	18.24 ea.
1/8" x 1-1/2" Tension Pins	.04 / 10 pcs.
Epoxy Kits - 1 Pint Clear	1.64 ea.
FRP Base Plate with Post - Total Height 40" (Polyester)	5.50 ea.
Alternate Handrail Post, 2-3/8" x 2-3/8" x 50", Routed Out, No Bottom Plugs	5.70 ea.
90° Corner Sample	1.30 ea.
Tee Sample	0.90 ea.

NOTE: UV Coating is recommended for exterior applications and is available at an additional cost.

SAF RAIL™

INDUSTRIAL FIBERGLASS RAILING SYSTEMS

ALL ITEMS GENERALLY ARE IN INVENTORY FOR IMMEDIATE SHIPMENT



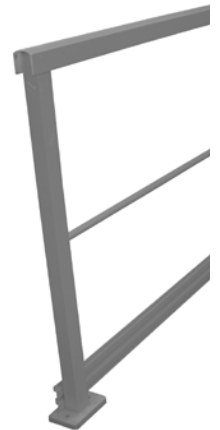
ROUND RAILING SYSTEM COMPONENTS

COMPONENT	WEIGHT (LBS.)
1.9" OD x 1.5" ID Yellow Polyester Fire Retardant UV Inhibited	0.88 / ft.
4" Kickplate Yellow Polyester Fire Retardant UV Inhibited @ 240"	0.65 / ft.
Black End Caps	0.05 ea.
Adjustable Corner Assembly (Total Assembly)	0.36 ea.
90° Corner Assembly	0.35 ea.
Intermediate Connectors	0.05 ea.
Kickplate Splice	0.11 ea.
Kickplate 90° Splice	0.15 ea.
Split Tube, 1.5 x 4" (for round handrail)	0.15 ea.
Split Tube, 1.5 x 8" (for round handrail)	0.30 ea.
Round Connector, 1.5 x 8"	0.53 ea.
1/8" x 1-1/2" Tension Pins	0.04 / 10 pcs.
FRP Base Plate with Post, Total Height 39-9/16" (YFRPE)	5.50 / pc.
Stainless Steel Kickplate Bracket	0.12 ea.
1/4" x 1" Stainless Steel Bolt Assembly	.05 ea.

CHANNEL TOP RAILING SYSTEM COMPONENTS

For more information on the Channel Top option, please refer to the SAFRAIL™ brochure.

COMPONENT	
1" Diameter Mid Rail, Yellow Polyester Fire Retardant, UV Coated	(5,000 linear feet min. run)
Channel Top Handrail, Yellow Polyester Fire Retardant, UV Coated	(5,000 linear feet min. run)
2" x 2" x .156" Tube (for post), Yellow Polyester Fire Retardant, UV Coated	
4" Kick Plate, Yellow Polyester Fire Retardant, UV Coated	



CUSTOM FIBERGLASS RAILING SYSTEMS

CUSTOM FABRICATED RAILING

Handrail may be ordered in custom colors and/or resins and may also be pre-fabricated. Prices and ship dates for custom fabricated handrail may be obtained by calling Strongwell Customer Service.

NOTE: Strongwell recommends a coating to reduce color fade for outdoor applications. If a coating is not applied, components may fade rapidly.

FIBERGLASS BAFFLE WALL PANELS

PANELS

WIDTH IN INCHES	LENGTH IN FEET	PE	LBS. PER LIN. FT.
12"	-	NS	3.70
24"	24	STOCKED	6.50

COMPOSOLITE®

FIBERGLASS BUILDING PANEL SYSTEM

PANEL SYSTEM COMPONENTS

COMPONENTS	LENGTH IN FEET	PE	PE/FR	VE/FR	LBS. PER LIN. FT.
24" Panel	20 & 24	NS	STOCKED	NS	7.22
Toggle	20	NS	STOCKED	NS	0.31
3-Way Connector	20	NS	STOCKED	NS	1.65
Hanger	-	NS	NS	NS	1.55
45° Connector	-	NS	NS	NS	1.75
3.42" x 1.3" x .125" Cap Channel *	20	NS	STOCKED	NS	0.58
3.665" x 2" x 1/4" Structural Cap Channel	-	NS	NS	NS	1.30

* Also stocked in series 525 yellow, 20' lengths

DURASHIELD®

FIBERGLASS FOAM CORE BUILDING PANEL SYSTEM

PANELS

THICKNESS IN INCHES	PE	PE/FR	VE/FR	LBS. PER LIN. FT.
1"	NS	NS	NS	2.20
3"	NS	NS	NS	7.85

DURASHIELD HC®

FIBERGLASS HOLLOW CORE BUILDING PANEL SYSTEM

PANELS

THICKNESS IN INCHES	PE	PE/FR	VE/FR	LBS. PER LIN. FT.
1"	NS	NS	NS	3.27

FIBERGLASS DECKING PRODUCTS

SAFPLANK®

FIBERGLASS INTERLOCKING DECKING SYSTEM

SAFDECK®

FIBERGLASS OVERLAPPING DECKING SYSTEM

STRONGDEK™

FIBERGLASS ARCHITECTURAL DECKING SYSTEM

DECKING PANELS

PANEL	LENGTH IN FEET	PE	PE/FR	VE/FR	LBS. PER LIN. FT.
12" SAFPLANK®	20 & 24	NS	STOCKED	NS	2.50
24" SAFPLANK®	20 & 24	NS	STOCKED	NS	5.10
36" SAFPLANK HD®	24	NS	STOCKED	NS	21.00
SAFDECK®	24	NS	STOCKED	NS	4.51
STRONGDEK™	24	NS	STOCKED	NS	2.53

DECKING ACCESSORIES

SIZES IN INCHES	PE	PE/FR	VE/FR	LBS. PER LIN. FT.
2.2 x 1.063 x .563 x .080 Cap Channel	NS	NS	NS	0.24
STRONGDEK™ Starter Channel	NS	NS	NS	2.38

FIBRE BOLT®

FIBERGLASS STUDS AND NUTS

STUDS

SIZES IN INCHES	LENGTH IN FEET	STUDS PER PACKAGE	PACKAGE WEIGHT (LBS.)
3/8	4	15	4.5
1/2	4	10	5.0
5/8	4	10	7.5
3/4	4	6	7.0
1	4	4	8.5

HEX NUTS

SIZES IN INCHES	NUTS PER PACKAGE	PACKAGE WEIGHT (LBS.)
3/8	100	1.5
1/2	100	2.0
5/8	100	3.8
3/4	25	3.0
1	25	3.0

HS ARMOR PANELS

FIBERGLASS BALLISTIC PANEL

UL LEVEL 1 (OFF WHITE)

PANEL		LBS. PER LIN. FT.
1/4" x 36" x 96"	NS	8.14
1/4" x 48" x 96"	NS	11.00
1/4" x 36" x 120"	NS	8.14
1/4" x 48" x 120"	NS	11.00

UL LEVEL 2 (OFF WHITE)

PANEL		LBS. PER LIN. FT.
.35" x 36" x 96"	NS	11.06
.35" x 48" x 96"	NS	14.32
.35" x 36" x 120"	NS	11.06
.35" x 48" x 120"	NS	14.32

UL LEVEL 3 (OFF WHITE)

PANEL		LBS. PER LIN. FT.
1/2" x 36" x 96"	NS	15.70
1/2" x 48" x 96"	STOCKED	21.70
1/2" x 36" x 120"	NS	15.70
1/2" x 48" x 120"	NS	21.70

GENERAL INFORMATION

EXTREN® SERIES 500

An all-purpose series utilizing a premium polyester resin system with a UV inhibitor.

Color: olive green

EXTREN® SERIES 525

An all-purpose series utilizing a fire retardant premium polyester resin system with a UV inhibitor.

Color: slate gray (plus certain handrail and fixed ladder components in yellow)

EXTREN® SERIES 625

A premium series — both fire retardant and highly corrosion resistant — utilizing a vinyl ester resin system with a UV inhibitor.

Color: beige

Note 1: Any Series 500, 525 and 625 EXTREN® product can be manufactured upon request to meet the mechanical and physical properties of BS EN 13706 (E23) European standards (minimum quantities may apply). All standard EXTREN® products meet and/or exceed the structural requirements of E17 European standards.

Note 2: EXTREN® products can be produced to meet NSF potable water standards. Minimum quantities may apply.

STOCKED ITEMS

Carried in inventory, no minimum quantity required.

LENGTHS CUT FROM STOCK: Special lengths can be cut from stock shapes and rods. Plate can be cut to size desired from 48" x 96" stock. A fabrication cutting charge will be applied.

NONSTOCKED ITEMS

Tooling available. Check for possible availability.

SMALL QUANTITIES OF NONSTOCKED ITEMS: These are occasionally available because of overruns. Purchaser having a requirement for small quantities of nonstocked items should inquire about current inventory status. Such items are subject to prior sale, so delivery cannot be guaranteed.

MILL RUN

SPECIAL MILL RUN VARIANCE: The pultrusion process does not lend itself to producing exact quantities. Mill runs may vary 10%. If minimum quantities are required, orders should be placed considering these variances.

MINIMUM ORDER VALUE

Minimum order value is \$250.

COLORS

Special colors are available for shapes and plate. Extra cost will vary, depending on cost, amount of pigment required, and standards of acceptability. Minimum quantities may apply.

SPECIAL RESINS AND FORMULAE

Special resins and resin mixes will be quoted specifically after resin mix has been tested for adaptability to the production process involved.

PACKAGING

If other than standard packaging is required, contact Customer Service for additional costs.

TERMS

All products are manufactured in accordance to tolerance properties as published in Strongwell's *Design Manual*. Strongwell's Standard Terms and Condition of Sale apply. F.O.B./Ex Works dispatch location.



ISO 9001 Quality Certified Manufacturing Plants



BRISTOL LOCATION
400 Commonwealth Ave.
Bristol, VA 24201 USA
(276) 645-8000

CHATFIELD LOCATION
1610 Highway 52 South
Chatfield, MN 55923-9799 USA
(507) 867-3479
www.strongwell.com

HIGHLANDS LOCATION
26770 Newbanks Road
Abingdon, VA 24210 USA
(276) 645-8000