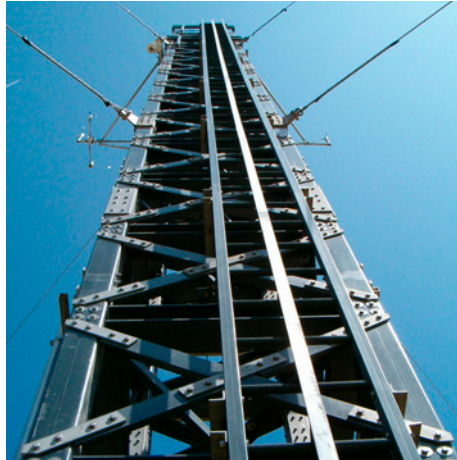




## COMPOSOLITE® SECONDARY CONTAINMENT SYSTEM

EPA SPCC (40 CFR Part 112) Compliant secondary containments are ideal around substation transformers, chemical storage areas or construction sites.



## EXTREN® STRUCTURAL SHAPES & PLATE

Strongwell offers a large selection of pultruded structural shapes and plate, with over 100 standard shapes available, including I-beams, wide-flange beams, channels, tubes, plate and more.



## SAFRAIL™ INDUSTRIAL HANDRAIL & LADDER SYSTEMS

Strongwell fiberglass handrail, ladder and cage systems provide non-sparking, corrosion resistant and maintenance free options and generally do not require grounding.



## UTILICOVER® TRENCH COVER SYSTEM

UTILICOVER® is a direct replacement for concrete trench covers commonly used in substations. Panels weigh 25% that of concrete panels, offering easy access for maintenance tasks.



## PULTRUDED & MOLDED GRATING

Strongwell fiberglass grating panels are a strong, light weight replacement for metallic grates, available in a wide variety of thicknesses, panel sizes, colors and resin systems.



## BUILDING PANEL ENCLOSURES

Strongwell offers several non-conductive, non-corrosive and easy-to-install building panel systems which can be used to house electrical or other equipment. Panels are also available with insulation value up to R-17.

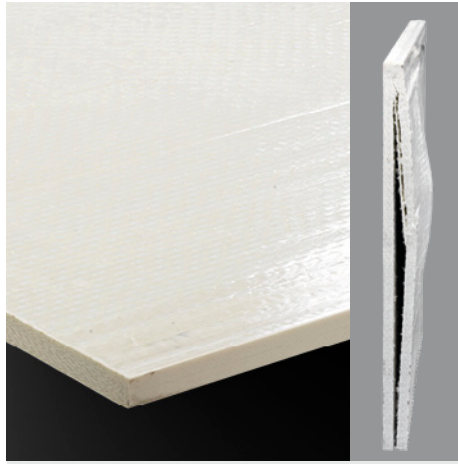
## BENEFITS OF STRONGWELL FRP

- Won't Rust, Rot or Corrode
- Lightweight
- Low Electrical & Thermal Conductivity
- Easy to Install
- High Strength-to-Weight Ratio
- Virtually Maintenance Free
- EMI & RFI Transparency
- Impact Resistant



### MANHOLE LADDERS

Strongwell can produce manhole ladders in numerous lengths, widths, rung configurations and connection methods using its line of SAFRAIL™ ladders and/or EXTREN® structural shapes and custom fabrication.



### BALLISTIC PROTECTION

HS Armor panels are available to meet UL 752 Levels 1-3, and can be paired with other Strongwell systems to offer as high as Level 8 protection for substation hardening or other protective enclosures.



### SUBSTATION PERIMETER FENCING

DURAGRID® and DURAGRATE® grating can be used vertically along with EXTREN® structural shapes to create visually attractive and protective perimeter fencing.



### VAULT SHORING

EXTREN® Vault Shoring components mitigate the potential failure risks in underground structures and offer feasible solutions to protect the equipment and elbows from falling concrete debris until a permanent solution is implemented.

### FABRICATION

In addition to its manufacturing capabilities, Strongwell offers full-scale fabrication of all of its products, from simple cut-to-length operations to full scale pre-assembly of its full line of products.

### CUSTOM PULTRUSIONS

Strongwell's expertise in pultrusion design, engineering and manufacturing makes it possible to offer unique solutions to meet customers' exact requirements. In-house drafting, FEA Analysis and 3D modeling capabilities, as well as an in-house engineering staff provide key advantages when seeking to manufacture custom pultrusions.



*ISO-9001 Quality Certified Manufacturing Plants*

**BRISTOL LOCATION**  
400 Commonwealth Ave.  
Bristol, VA 24201 USA  
(276) 645-8000

**HIGHLANDS LOCATION**  
26770 Newbanks Road  
Abingdon, VA 24210 USA  
(276) 645-8000

[www.strongwell.com](http://www.strongwell.com)



**CHATFIELD LOCATION**  
1610 Highway 52 South  
Chatfield, MN 55923-9799 USA  
(507) 867-3479