

**COMPLETE INSTALLATION**

RADIUS SCREEN WALL HIDDEN IN PLAIN "SITE"

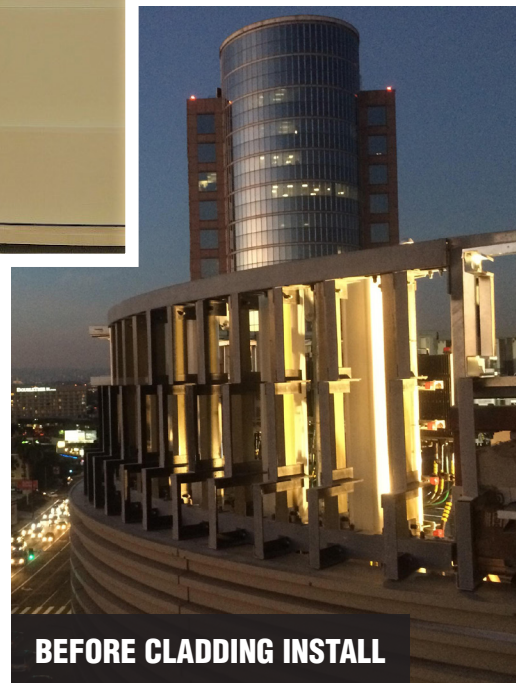
Smartphones have become the standard for on-the-go communication – in just about every form. As a result, the demands for infrastructure which supports mobile devices has grown immensely. Sprawling webs of cables, fiber optics, and antennas adorn rooftops and towers alike to make sure users can remain connected.

Balancing cellular through radio frequency coverage while maintaining aesthetics has become a creative endeavor for both building owners and service providers. For over a decade, Porter FRP, located in Perris, California, has been fabricating with pultruded fiberglass and structural composites. With its vast experience, Porter FRP has been able to demonstrate and showcase the practicality of using fiberglass in high profile locations with both structural and aesthetic requirements.

In this application, one of the largest cellular providers in the U.S. needed to replace a metallic radius screen wall. One issue with this particular cell site is its prominent location in an office building near LAX in West Los Angeles. In addition, the concealed structure possesses a radial curve.

For the unique needs of this project, Porter FRP presented a lightweight fiberglass solution which completely concealed the cellular system while adding architectural flair. The owner of the building requested limited use of heavy machinery so as to minimize disruption to building occupants. The products used were EXTREN® 4" x 1/4" tube, 4" x 1/4" angle, and 1/8" plate. All of which are LARR (Los Angeles Research Report) approved.

Although Strongwell was not specified on this project, Porter's previous experience with Strongwell's quality and customer service made it an easy choice for selection and installation. Within a month, the structure was erected and both fabricator and end-user were pleased with the overall outcome. ●

**BEFORE CLADDING INSTALL**

TECHNICAL DATA

Product:	Rooftop Cellular Radius Screen Wall
Process:	Pultrusion
Materials & Sizes:	EXTREN® Structural Shapes: - 4" x 1/4" square tube - 4" x 1/4" angle - 1/8" plate
For:	Porter FRP
User:	A Leading National Cellular Provider



Bristol Location
400 Commonwealth Ave.
Bristol, VA 24201 USA
(276) 645-8000
www.strongwell.com