

## MOLDED GRATING SUPPORTS NEW DOWNTOWN FLUSHING DEVELOPMENT

In many applications, molded grating is specified as a chemical resistant flooring choice for industrial applications including (but not limited to) food production facilities. In other non-industrial applications, this type of composite grating can be used in architectural screening, green rooftops, and fencing applications, to name a few. In projects which specify Strongwell, customers are supplied DURAGRATE® Molded Grating, exclusively made in the U.S.A.

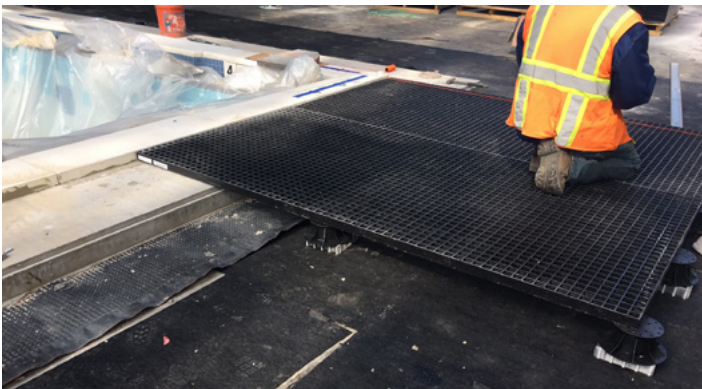
The Grand at Sky View Parc is located in the Flushing neighborhood of New York City. The billion dollar housing development currently houses 743 luxury condominium units, a four-acre planted rooftop garden, and an 800,000 square-foot shopping center on its ground floor.

The Grand at Sky View Parc specified molded grating to be used as subflooring material for their rooftop space. Strongwell supplied almost 1,500 molded grating panels for this installation.



In this application, the landscape architect needed a lightweight, bi-directional load, subflooring product which could be easily fabricated onsite to support the shared space which houses an outdoor kitchen area, a 75' swimming pool, reflecting pool, vegetation, and meditation area. With this worksite being located in the second most populated borough in New York City, it was significant that the DURAGRATE® 1" and 1-1/2" molded panels were able to be easily transported, shipped, and installed with minimal effort and disruption to traffic and residents.

The owners of the Grand at Sky View Parc, ONEX Real Estate Partners, have been extremely complimentary of both the service and quality of Strongwell's products, and the performance thus far of DURAGRATE® Molded Grating. ●



### TECHNICAL DATA

Product:	Rooftop Subflooring
Process:	Molded
Materials & Sizes:	DURAGRATE® Molded Grating: - 1" and 1-1/2" thick with 1-1/2" square mesh
For:	Moss Gilday Group, LLC
User:	ONEX Real Estate Partners



Bristol Location  
400 Commonwealth Ave.  
Bristol, VA 24201 USA  
(276) 645-8000  
[www.strongwell.com](http://www.strongwell.com)