



## Case Study: STRONGRAIL®, DURAGRID®, EXTREN®

### Pultruded Handrail Complements Aquatic Park

Originally built in 1965, the Chatfield Municipal Pool is adjacently located to the Chatfield High School in Minnesota. It was recently determined that the pool either needed to be renovated or replaced. A community decision was made in 2017 to replace the pool with a new aquatic center due to ongoing maintenance issues, new safety standards, and accessibility concerns.

Upon the completion of a feasibility study, a new \$4.5 million aquatic project was unveiled to include a new diving platform, zero-depth entry, a multi-story water slide, interactive areas, more swim lanes, an expanded deck space, and an additional pool area for swimming lessons.

STRONGRAIL® fiberglass handrail and fencing was utilized in different applications within the aquatic project. The previous pool lacked space partitions for pedestrian movement. Black STRONGRAIL® fencing was used to preserve large walkways for visitors and staff members around the food and beverage area. Near the water slide, STRONGRAIL® architectural handrail was installed to limit public access around the supporting frames of the slide's enclosed tubes.

The water slide access tower is a fabricated structure outfitted with EXTREN® pultruded fiberglass



structural shapes as well. STRONGRAIL® square handrail was chosen as the railing solution throughout the tower. The fine grit flooring surface for the stairs and landing platforms utilized DURAGRID® T-1800 pultruded grating. EXTREN® 525 plate was chosen for the structure's façade.

Fiberglass was chosen due to the city's desire for a durable, nonconductive, and low maintenance material for its aquatic park. As building materials were examined, the designer had to take into account the corrosion aspects of the application as well as the bitterly cold Chatfield winter temperatures. The thermal conductivity of FRP is 1/100<sup>th</sup> that of steel.

Due to tight project deadlines, the city needed a domestic manufacturer to work with the hired architect to design and fabricate the water slide tower.



In total, three contractors worked through the harsh Minnesota winter to install and complete the project for the Summer 2019 opening.

Since its opening, the operators of the pool have been complimentary of the custom color and performance of Strongwell's products, assembly fitting, time tables, installation, and theming of its products with the rest of the facility. ●



**STRONGWELL**

#### Corporate Offices / Bristol

400 Commonwealth Ave.  
Bristol, VA 24201 USA  
(276) 645-8000

#### Chatfield

1610 Highway 52 South  
Chatfield, MN 55923-9799 USA  
(507) 867-3479

#### Highlands

26770 Newbanks Road  
Abingdon, VA 24210 USA

#### Mexico

Avenida La Silla Apodaca #110  
Fracc Parque Industrial La Silla Apodaca  
Apodaca, NL 66648 MX

[www.strongwell.com](http://www.strongwell.com)

 Please Recycle





## Case Study: DURAGRATE®

### Molded Grating Supports New Downtown Flushing Development

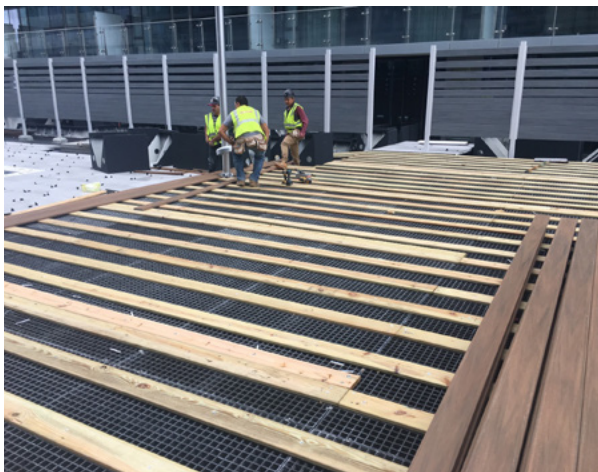
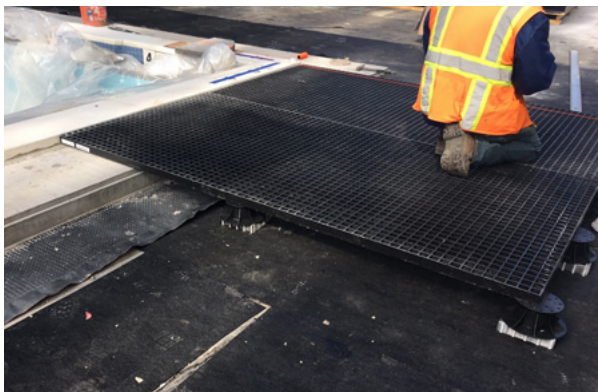
In many applications, molded grating is specified as a chemical resistant flooring choice for industrial applications including (but not limited to) food production facilities. In other non-industrial applications, this type of composite grating can be used in architectural screening, green rooftops, and fencing applications, to name a few. In projects which specify Strongwell, customers are supplied DURAGRATE® Molded Grating, exclusively made in the U.S.A.

The Grand at Sky View Parc is located in the Flushing neighborhood of New York City. The billion dollar housing development currently houses 743 luxury condominium units, a four-acre planted rooftop garden, and an 800,000 square-foot shopping center on its ground floor.

The Grand at Sky View Parc specified molded grating to be used as subflooring material for their rooftop space. Strongwell supplied almost 1,500

molded grating panels for this installation. In this application, the landscape architect needed a lightweight, bi-directional load, subflooring product which could be easily fabricated onsite to support the shared space which houses an outdoor kitchen area, a 75' swimming pool, reflecting pool, vegetation, and meditation area. With this worksite being located in the second most populated borough in New York City, it was significant that the DURAGRATE® 1" and 1-1/2" molded panels were able to be easily transported, shipped, and installed with minimal effort and disruption to traffic and residents.

The owners of the Grand at Sky View Parc, ONEX Real Estate Partners, have been extremely complimentary of both the service and quality of Strongwell's products, and the performance thus far of DURAGRATE® Molded Grating. ●



## Spotlight on Strongwell Talent



**Gene Chumley**  
Director, Virginia Operations

**Gene Chumley** has accepted the position of Director, Virginia Operations. Gene has many years of valuable manufacturing experience. Most recently, he held the position of Manager, Bristol Operations, after being hired as Engineering Services Manager in 2018. Prior to joining Strongwell, he was Manager of Engineering Services for Bristol Compressors. Gene currently serves on the board of the Southwest Virginia Alliance for Manufacturing. He earned his Bachelor of Science degree in Mechanical Engineering and his Master of Science degree in Engineering Management from the University of Tennessee. In his new role, Gene will continue to lead all Bristol manufacturing functions including fabrication, molded grating, pultrusion, production control, material control, maintenance, machine build, machine shop, tooling, and logistics. Additionally, Virginia Operations Quality Assurance, Process Engineering, and Highlands Operations will report to Gene.



**Meghan Carty**  
Strategic Pricing Manager  
- Virginia Operations

**Meghan Carty** has accepted the position of Strategic Pricing Manager. Meghan will be responsible for the management and coordination of all Virginia Operations pricing activities. She will guide the pricing activities for all standard, custom, and fabricated products, working closely with Sales Directors, Fabrication Sales, Operations, Accounting, and Customer Service to coordinate and provide strategic market pricing for all Virginia produced products and services. In her new role, Meghan will report to the Vice President, Sales and Engineering. Meghan began her career with Strongwell in 1999 in Customer Service. She has held progressively increasing positions of responsibility as Account Specialist, Cooling Tower Project Coordinator, Customer Service Manager, Pricing Manager for standard products in Bristol, and most recently Purchasing and Pricing Manager. She received her Bachelor of Science degree from the University of Tennessee in 1994.



**Christy Wood**  
Corporate Accounts Associate  
- Bristol

**Christy Wood** has joined the Customer Service team in the role of Corporate Accounts Associate, with a focus on TCM and order entry. Christy brings over 22 years of experience in the telephony business in various roles such as administrative assistant, switch programming, number portability, reporting and analysis and project management. Most recently, she worked part-time at Bristol Motor Speedway in Ticket Sales.



**Phil Taylor**  
Purchasing Manager  
- Virginia Operations

**Phil Taylor** has accepted the position of Virginia Operations Purchasing Manager. Phil brings an extensive purchasing resume to Strongwell. Most recently, he worked as Procurement Manager for CUI in Simpsonville, South Carolina. Previously, Phil worked for many years at General Shale Brick as Procurement Specialist and was responsible for procuring raw materials, retail goods, energy resources, expensed items, and capital equipment.





## Durability Study: EXTREN®, SAFRAIL™, DURAGRID®

### Cordova Park Observation Tower is Still a Winner after 20 Years

Rated as the #1 thing to do in Otley, IA, by a major travel website, the 123-foot Cordova Park Observation Tower is a balanced representation of how steel and FRP can come together to form a complex structure which shares similar design characteristics with lighthouses.

Prior to being a tourist attraction, the pipe tower was used for water storage and then decommissioned. Upon the completion of a feasibility study, it was concluded that structural work would be needed to strengthen the tower shell if the spiral

walkways were constructed with aluminum or steel. The additional reinforcement costs and conductivity concerns turned engineers to a lightweight and nonconductive design using pultruded fiberglass.

Over a period of eight months, Strongwell's engineering staff and Calhoun-Burns and Associates worked together to design and attach 170 composite stair treads, landing structures, stringers, handrail, and a cage system to the steel structure. This transformation turned the once abandoned structure into the tallest public observation

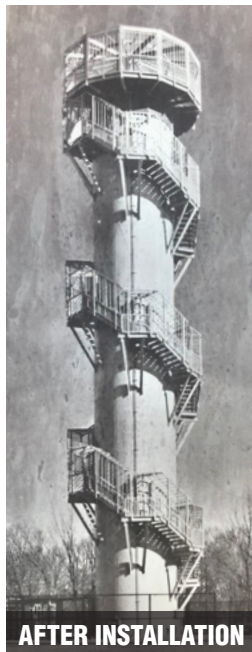
tower in the Midwest in a public park.

The amended refurbishment scope with composite materials was also how this structure was chosen by the Consulting Engineering Council of Iowa as the 1999 Grand Conceptor Awardee in the Engineering Excellence Awards category.

Since a short time after its opening, the tower has charged a modest entry fee of 50 cents per patron to fund potential refurbishment projects. Over 20 years and more than 325,000 visitors later, the owner of the structure, Marion County Conservation Department, reported that they have performed virtually no maintenance on the fiberglass portions of the structures since its public opening in 1999. ●



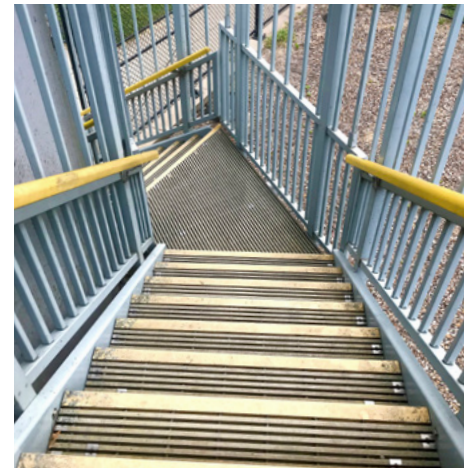
**BEFORE INSTALLATION**



**AFTER INSTALLATION**



**TODAY**



#### Tim Finley

Custom Products Manager  
- Chatfield

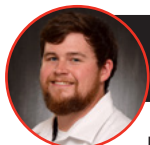
Tim Finley has joined Strongwell as the Custom Products Manager. Tim graduated from Minnesota State University Mankato in 2008, majoring in Biology, with a minor in Chemistry. Tim was previously employed at HitchDoc MFG as a Cost Estimator.



#### Sean Statzer

Training Coordinator  
- Virginia Operations

Sean Statzer has accepted the position of Training Coordinator for Virginia Operations. In this role, he will report to the Corporate Director of Human Resources & EHS. Sean has a strong background in videography, music production, marketing, and public speaking. During his time at Cumberland Marketing, Sean developed music for commercials, social media videos, and advertising campaigns. Sean is the founder of a non-profit organization, Stay Stirred Up, which provides character development for at-risk youth through opportunities to discover, cultivate, and showcase their talents and passions.



#### Jonathan Tedder

Staff Accountant / Job Cost Analyst  
- Bristol

Jonathan "Johnny" Tedder has accepted the position of Staff Accountant / Job Cost Analyst. In this new role, he will report to the Accounting Manager. Johnny earned his Bachelor's Degree in Accounting and Corporate Finance from East Tennessee State University. He comes to Strongwell from K-VA-T Food Stores where he worked in accounting and accounts receivable at their Corporate Offices.



#### Roberto González

Production Supervisor - Mexico

Roberto González has accepted the position of Production Supervisor. Roberto will report to the Plant Manager and will be in charge of a production shift for the Mexico facility. Roberto began his career with Strongwell in 2017 as Maintenance Technician. Prior to Strongwell, Roberto gained valuable experience while employed with Whirlpool and Tuberia Helicoidal in both Maintenance and Supervision areas.



#### Olan Lovlien

Fabrication Lead Estimator  
- Chatfield

Olan Lovlien has been promoted to Fabrication Lead Estimator for the Chatfield Location. Olan was originally hired in 2006 as a Drafter for our Industrial Fabrication Product line and later moved into our Fab/Sales Estimating department where he has been quoting Fabrication projects for the past 3-1/2 years.



#### Robert Evans

Plant Manager - Highlands

Robert Evans has accepted the position of Plant Manager for the Highlands Location. In this role, he will report to the Director, Virginia Operations. Robert comes to Strongwell with many years of valuable manufacturing and management experience. Most recently, he held the position of Director of Manufacturing at Sinomax-USA (East) in La Vergne, Tennessee. Robert completed coursework in Engineering from Mississippi State University.



STRONGWELL - CORPORATE OFFICES  
400 COMMONWEALTH AVE.  
BRISTOL, VA 24201 USA

PRSRT STD  
US Postage  
**PAID**  
MWI

## What's in this Issue:



**Pultruded Handrail Complements Aquatic Park**



**Molded Grating Supports New Downtown Flushing Development**



**Cordova Park Observation Tower is Still a Winner after 20 Years**



**Spotlight on Strongwell Talent**



**GO DIGITAL**



**Literature Updates**

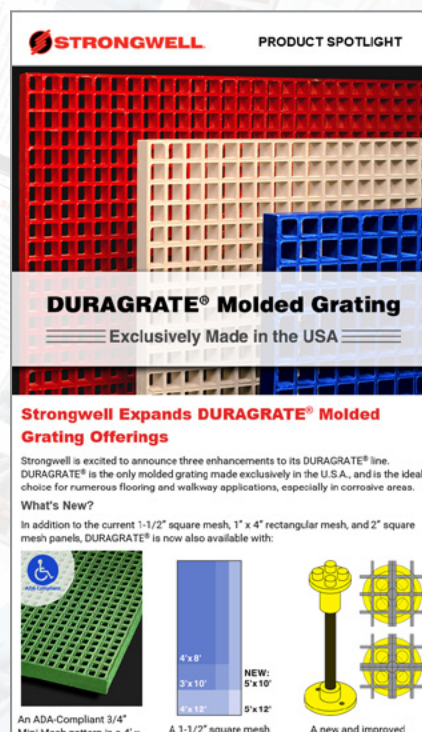
## > DITCH THE PRINT < GO DIGITAL

### BENEFITS:

- One Email per Month  
(Print Delivers Only 3x per Year)
- Technical Updates
- EcoFriendly - Help Us Reduce Our Carbon Footprint
- Easier Access to Your Salesperson  
(Simply Reply to the Email)
- New Product Announcements  
(Be the First to Know)
- More In-Depth Case Studies

**HOW:** Visit [www.strongwell.com/godigital](http://www.strongwell.com/godigital) to sign up.

**WANT MORE?** Register for our Design Manual at [www.strongwell.com/member-signup](http://www.strongwell.com/member-signup)



November 2019 Email



### Literature Updates:

- Industrial Product Line Brochure
- Company Portfolio
- Design Manual Sections:
  - 3 (I+M), 12 (I+M)
- UTILICOVER® Flyer
- HS Armor Panel Brochure
- Decking & Planking Systems Brochure
- DURAGRATE® Brochure (I+M)
- DURADEK® vs. DURAGRATE® Comparison Flyer
- Decking Fasteners Flyer

**Visit**  
[www.strongwell.com](http://www.strongwell.com)  
for the latest  
resources.