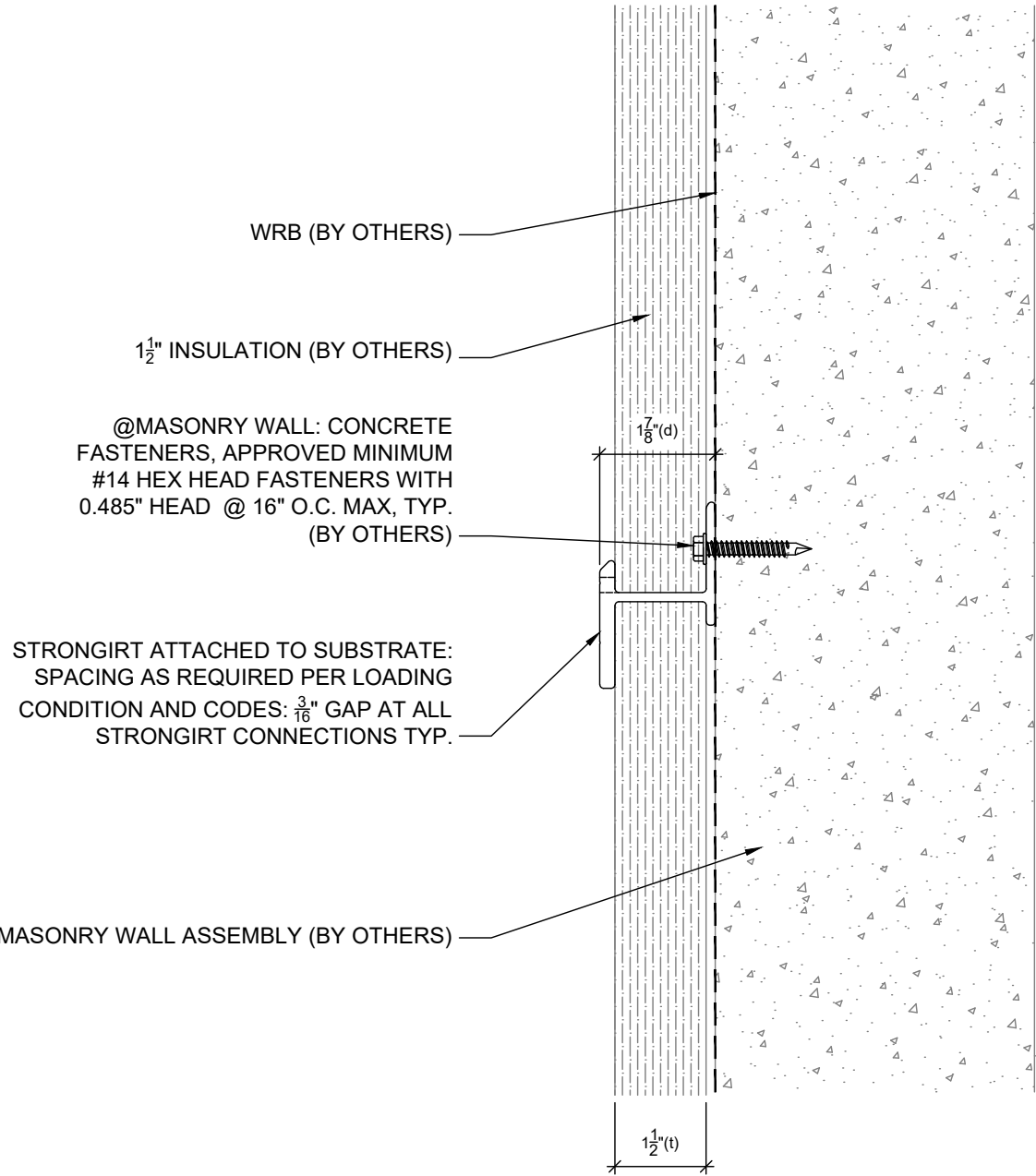
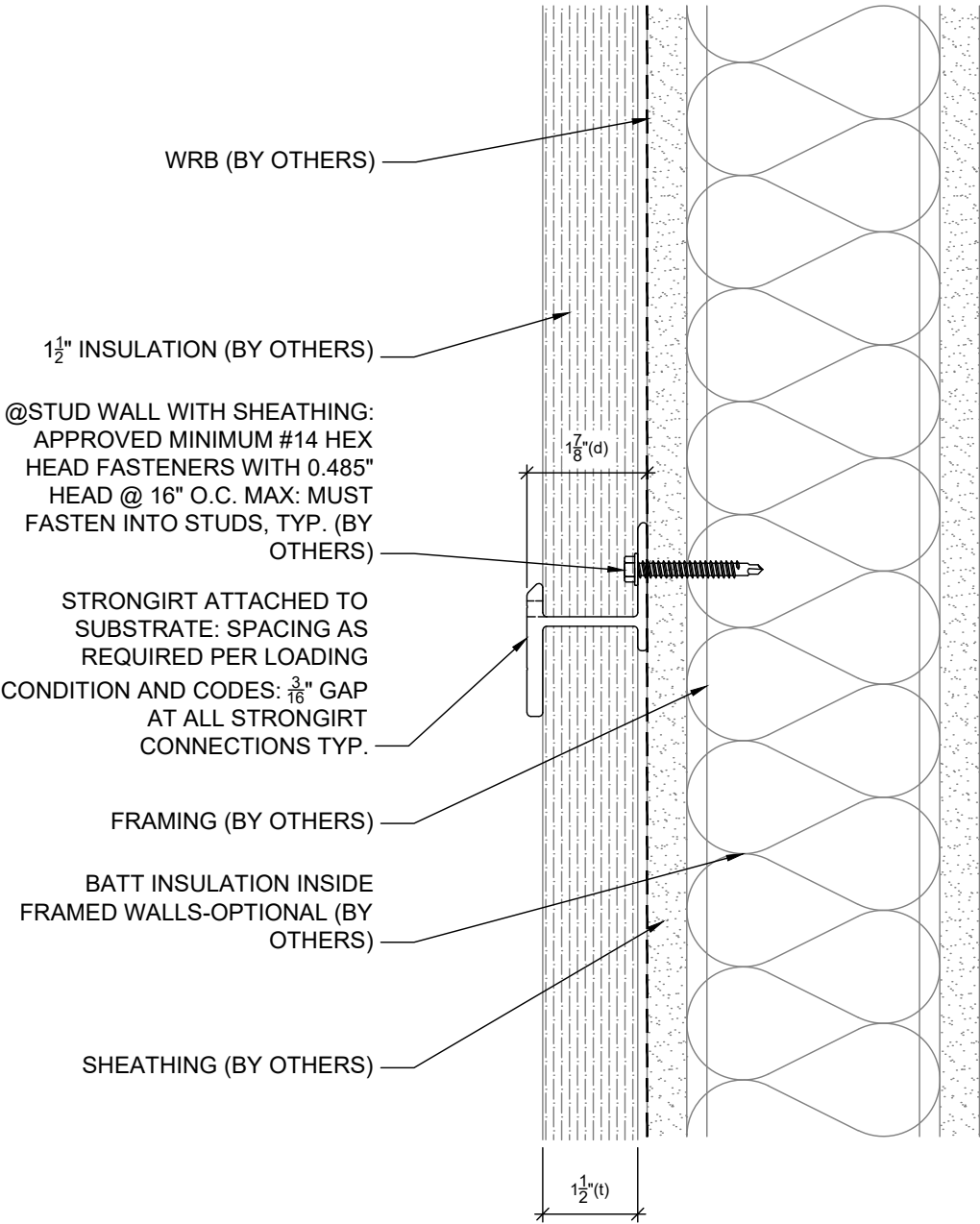




NOTE: DETAILS ARE PROVIDED FOR INFORMATION ONLY, AND ARE SUBJECT TO CHANGE WITHOUT NOTICE. SPECIFIC PROJECT ENGINEERING BY OTHERS WILL ADDRESS ATTACHMENT SPACING, ORIENTATION AND LOADING. CONTACT STRONGWELL FOR FURTHER DETAIL, AND TO INQUIRY ABOUT UPDATES AND REVISIONS.



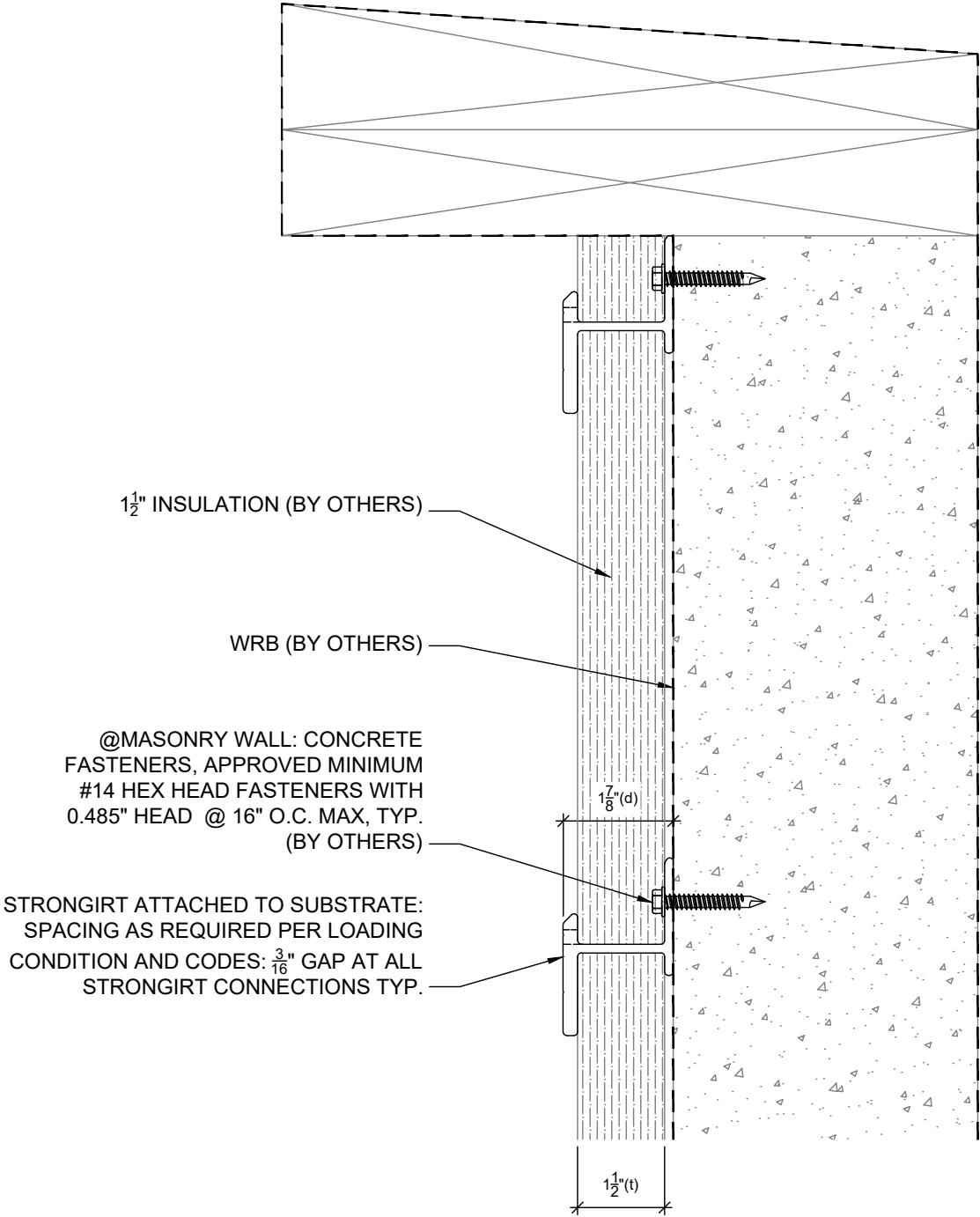
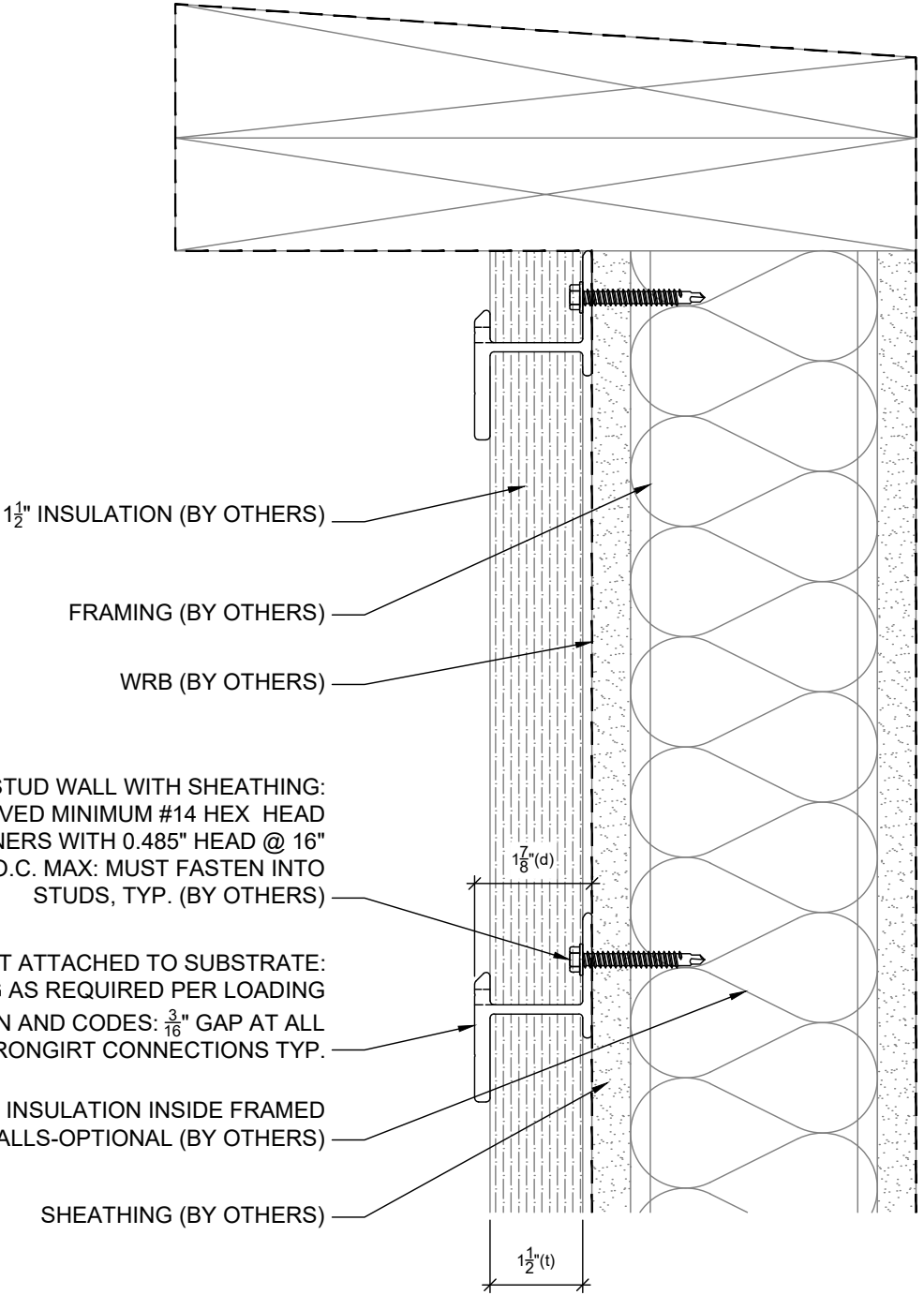
STRONGIRT PROFILES ARE DESIGNED TO ACCOMMODATE A RANGE OF INSULATION THICKNESS AS NOTED BELOW

INSULATION THICKNESS (t)	1.5" (38.1mm)	2" (50.8mm)	2.5" (63.5mm)	3" (76.2mm)	3.5" (88.9mm)	4" (101.6mm)	4.5" (114.3mm)	5" (127mm)	5.5" (139.7mm)	6" (152.4mm)	5.0"ULTRA (127mm)	5.5"ULTRA (127mm)	6.0"ULTRA (127mm)	8.0"ULTRA (127mm)
STRONGIRT DEPTH (d)	1.9" (48.3mm)	2.4" (61.0mm)	2.9" (73.7mm)	3.4" (86.4mm)	3.9" (99.1mm)	4.4" (111.8mm)	4.9" (124.5mm)	5.4" (137.2mm)	5.9" (149.9mm)	6.4" (162.6mm)	5.5" (140mm)	6.0" (152mm)	6.5" (165mm)	8.5" (216mm)

SUBSTRATE: SHEATHING / MASONRY	INSULATION: BY OTHERS (ALL)	WALL SECTION NOT TO SCALE
CLADDING: --	DATE: 01-25-2023	
	GIRT ORIENTATION: HORIZONTAL	



NOTE: DETAILS ARE PROVIDED FOR INFORMATION ONLY, AND ARE SUBJECT TO CHANGE WITHOUT NOTICE. SPECIFIC PROJECT ENGINEERING BY OTHERS WILL ADDRESS ATTACHMENT SPACING, ORIENTATION AND LOADING. CONTACT STRONGWELL FOR FURTHER DETAIL, AND TO INQUIRY ABOUT UPDATES AND REVISIONS.



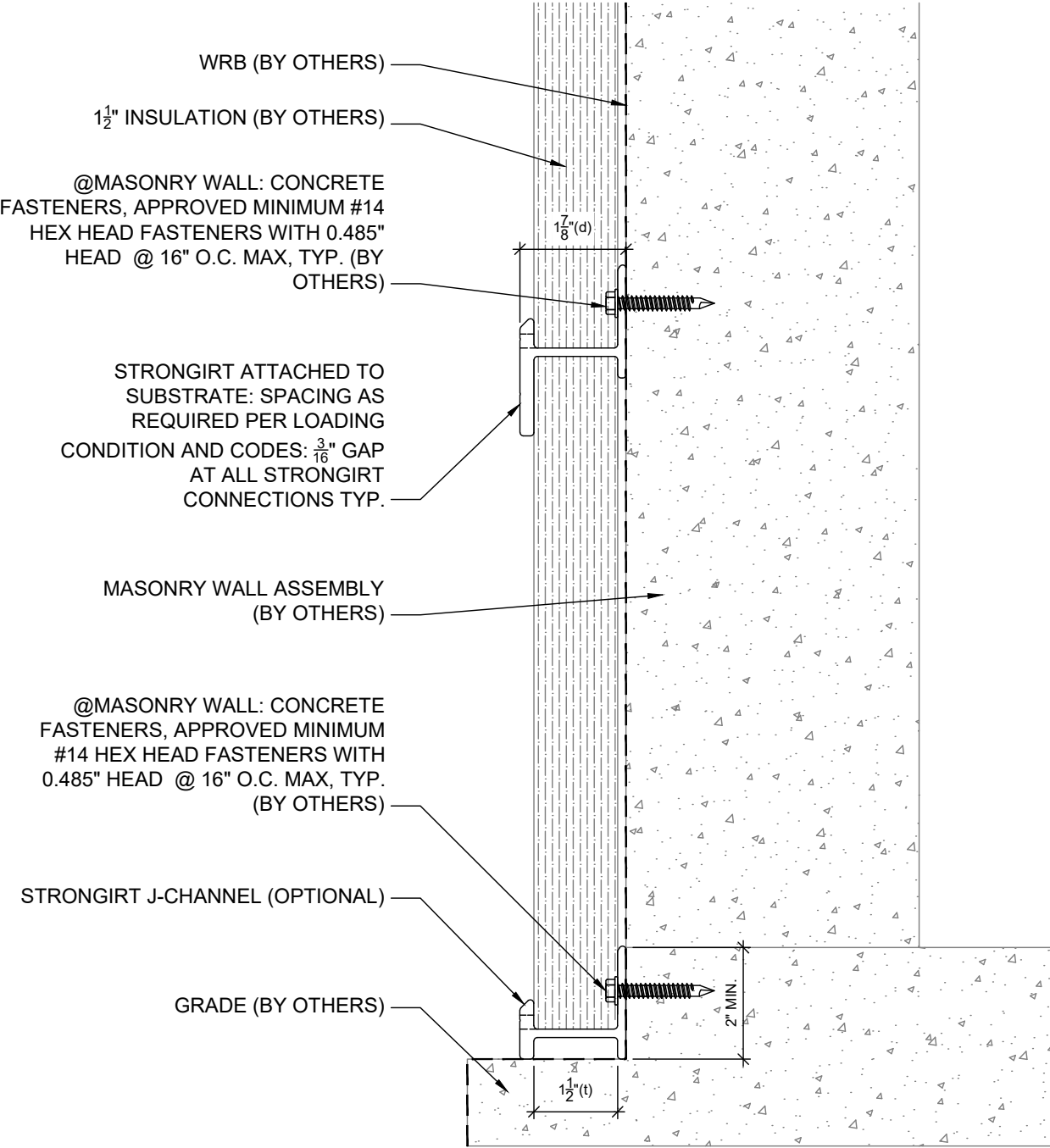
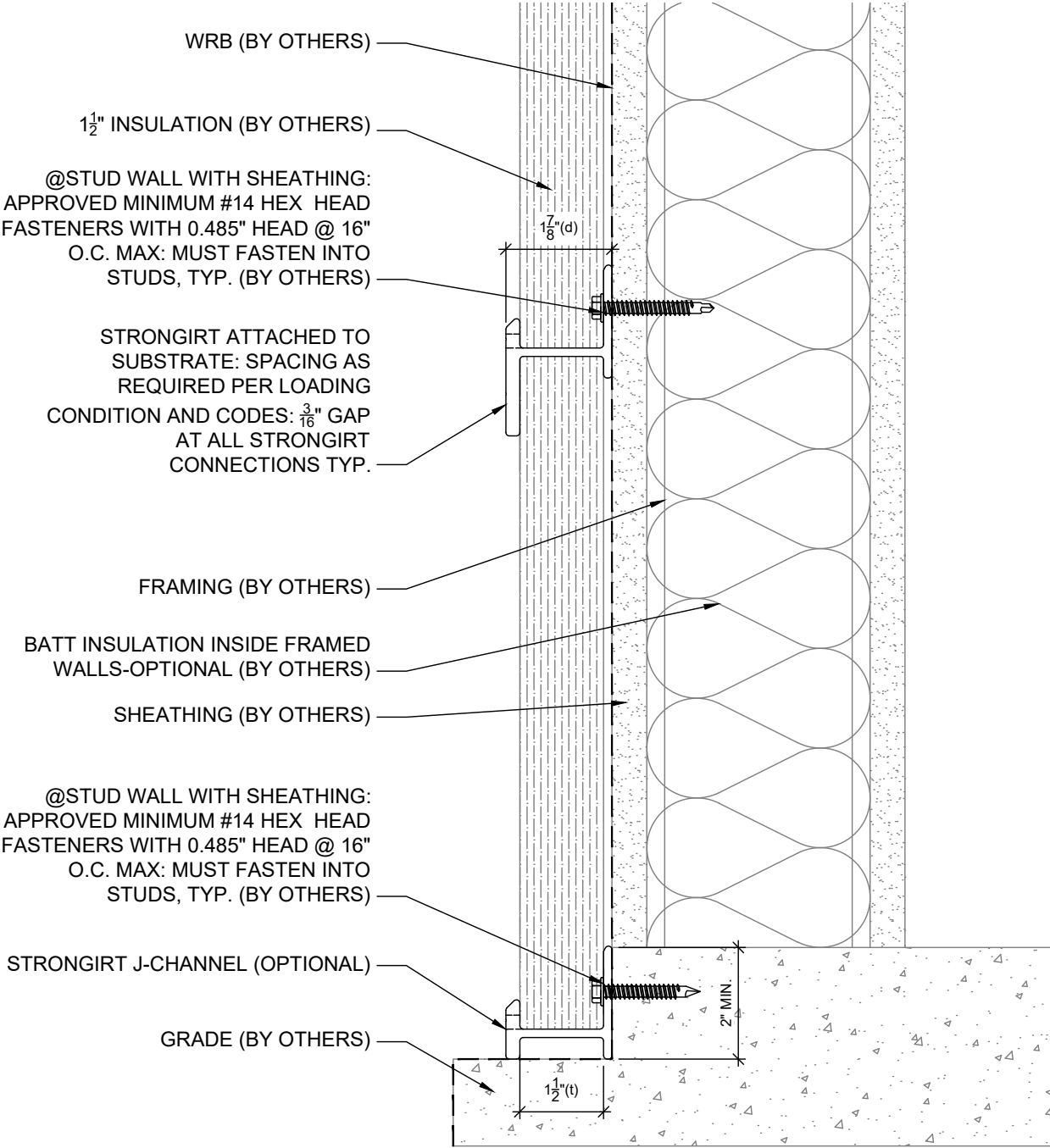
STRONGIRT PROFILES ARE DESIGNED TO ACCOMMODATE A RANGE OF INSULATION THICKNESS AS NOTED BELOW

INSULATION THICKNESS (t)	1.5" (38.1mm)	2" (50.8mm)	2.5" (63.5mm)	3" (76.2mm)	3.5" (88.9mm)	4" (101.6mm)	4.5" (114.3mm)	5" (127mm)	5.5" (139.7mm)	6" (152.4mm)	5.0"ULTRA (127mm)	5.5"ULTRA (127mm)	6.0"ULTRA (127mm)	8.0"ULTRA (127mm)
STRONGIRT DEPTH (d)	1.9" (48.3mm)	2.4" (61.0mm)	2.9" (73.7mm)	3.4" (86.4mm)	3.9" (99.1mm)	4.4" (111.8mm)	4.9" (124.5mm)	5.4" (137.2mm)	5.9" (149.9mm)	6.4" (162.6mm)	5.5" (140mm)	6.0" (152mm)	6.5" (165mm)	8.5" (216mm)

SUBSTRATE: SHEATHING / MASONRY	INSULATION: BY OTHERS (ALL)	PARAPET DETAIL NOT TO SCALE
CLADDING: --- ---	DATE: 01-25-2023	
	GIRT ORIENTATION: HORIZONTAL	



NOTE: DETAILS ARE PROVIDED FOR INFORMATION ONLY, AND ARE SUBJECT TO CHANGE WITHOUT NOTICE. SPECIFIC PROJECT ENGINEERING BY OTHERS WILL ADDRESS ATTACHMENT SPACING, ORIENTATION AND LOADING. CONTACT STRONGWELL FOR FURTHER DETAIL, AND TO INQUIRY ABOUT UPDATES AND REVISIONS.



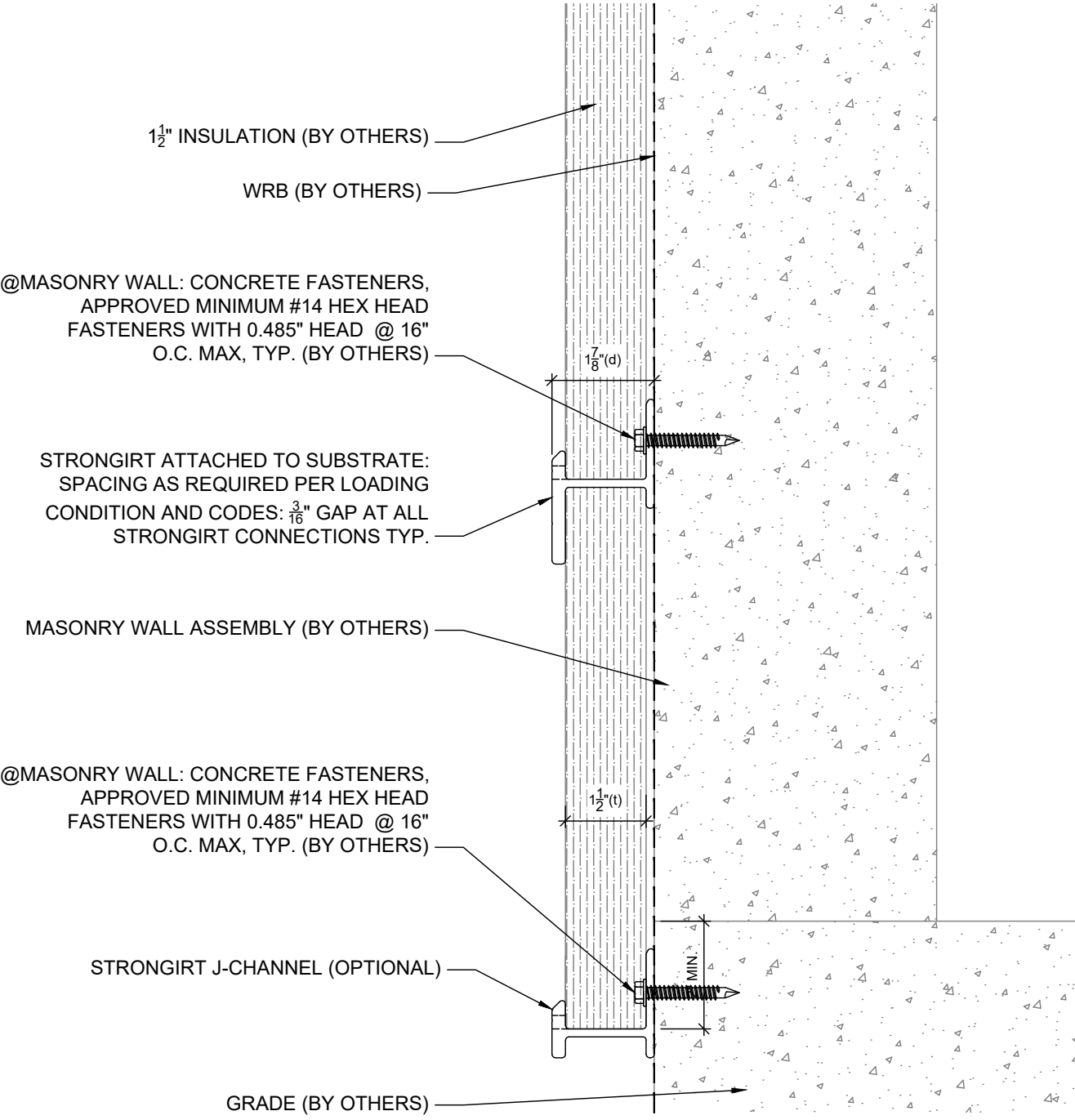
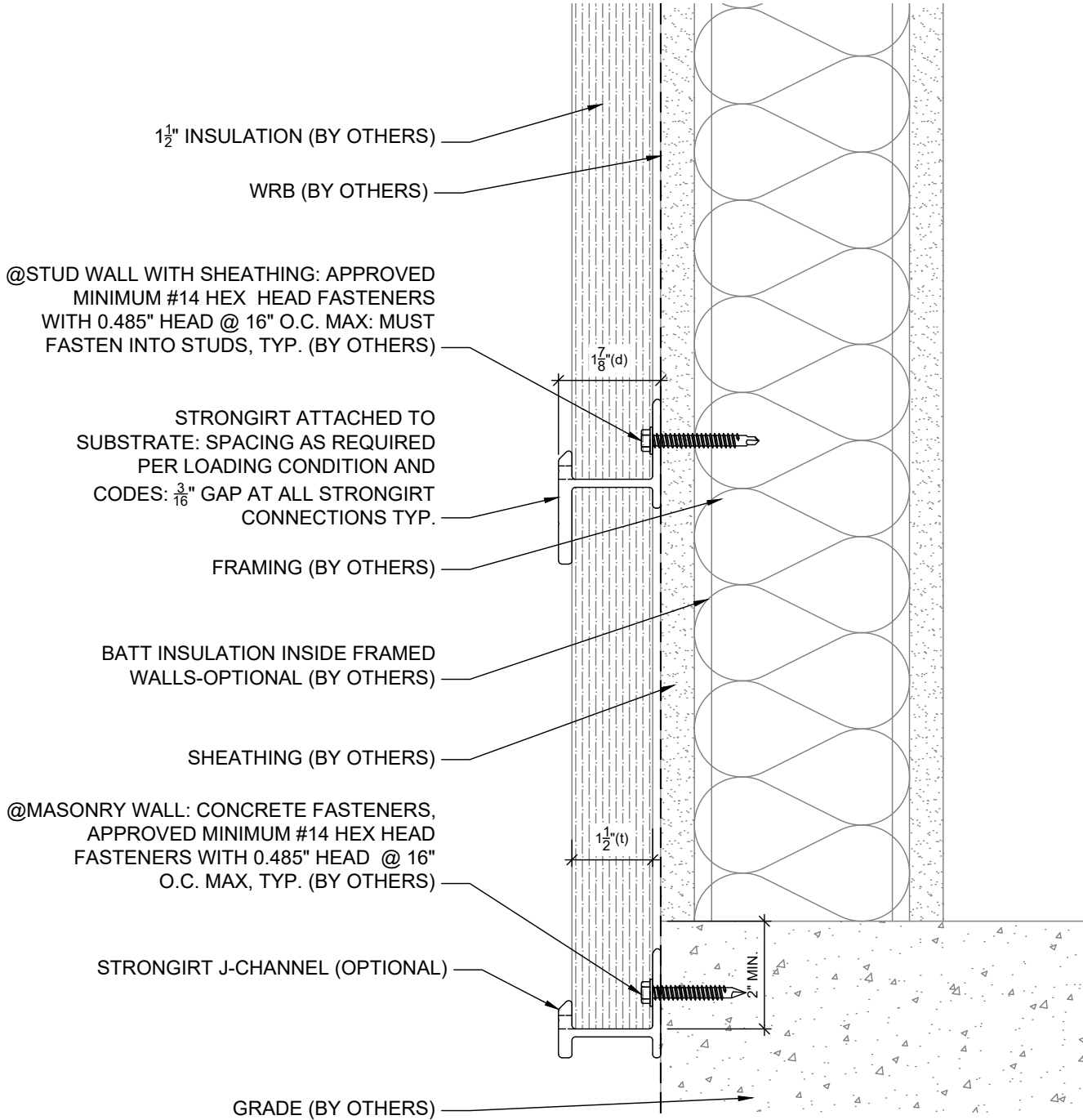
STRONGIRT PROFILES ARE DESIGNED TO ACCOMMODATE A RANGE OF INSULATION THICKNESS AS NOTED BELOW

INSULATION THICKNESS (t)	1.5" (38.1mm)	2" (50.8mm)	2.5" (63.5mm)	3" (76.2mm)	3.5" (88.9mm)	4" (101.6mm)	4.5" (114.3mm)	5" (127mm)	5.5" (139.7mm)	6" (152.4mm)	5.0"ULTRA (127mm)	5.5"ULTRA (127mm)	6.0"ULTRA (127mm)	8.0"ULTRA (216mm)
STRONGIRT DEPTH (d)	1.9" (48.3mm)	2.4" (61.0mm)	2.9" (73.7mm)	3.4" (86.4mm)	3.9" (99.1mm)	4.4" (111.8mm)	4.9" (124.5mm)	5.4" (137.2mm)	5.9" (149.9mm)	6.4" (162.6mm)	5.5" (140mm)	6.0" (152mm)	6.5" (165mm)	8.5" (216mm)

SUBSTRATE: SHEATHING / MASONRY	INSULATION: BY OTHERS (ALL)	FOUNDATION NOTCH DETAIL NOT TO SCALE
CLADDING: --- ---	DATE: 01-25-2023	
	GIRT ORIENTATION: HORIZONTAL	



NOTE: DETAILS ARE PROVIDED FOR INFORMATION ONLY, AND ARE SUBJECT TO CHANGE WITHOUT NOTICE. SPECIFIC PROJECT ENGINEERING BY OTHERS WILL ADDRESS ATTACHMENT SPACING, ORIENTATION AND LOADING. CONTACT STRONGWELL FOR FURTHER DETAIL, AND TO INQUIRY ABOUT UPDATES AND REVISIONS.



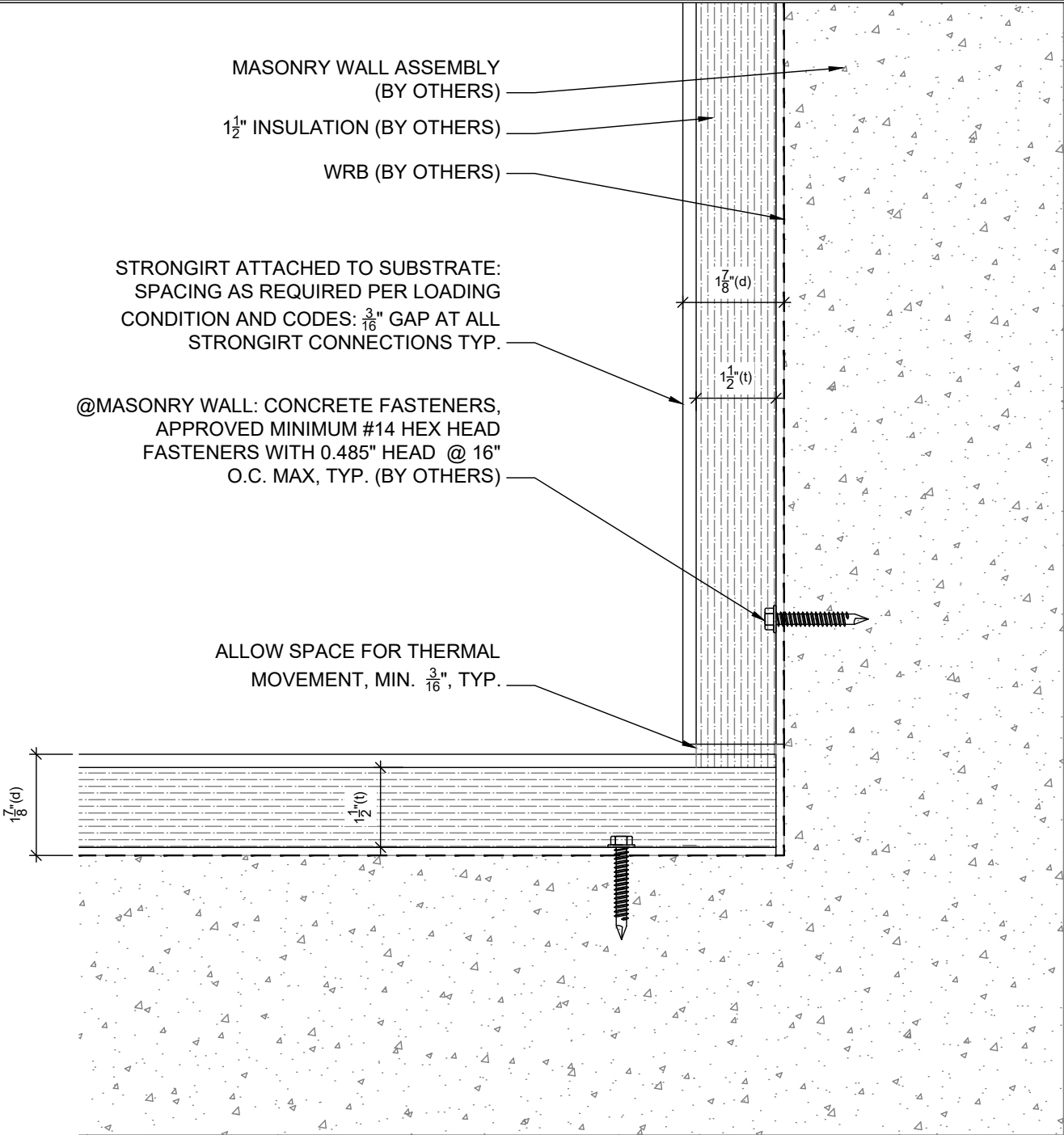
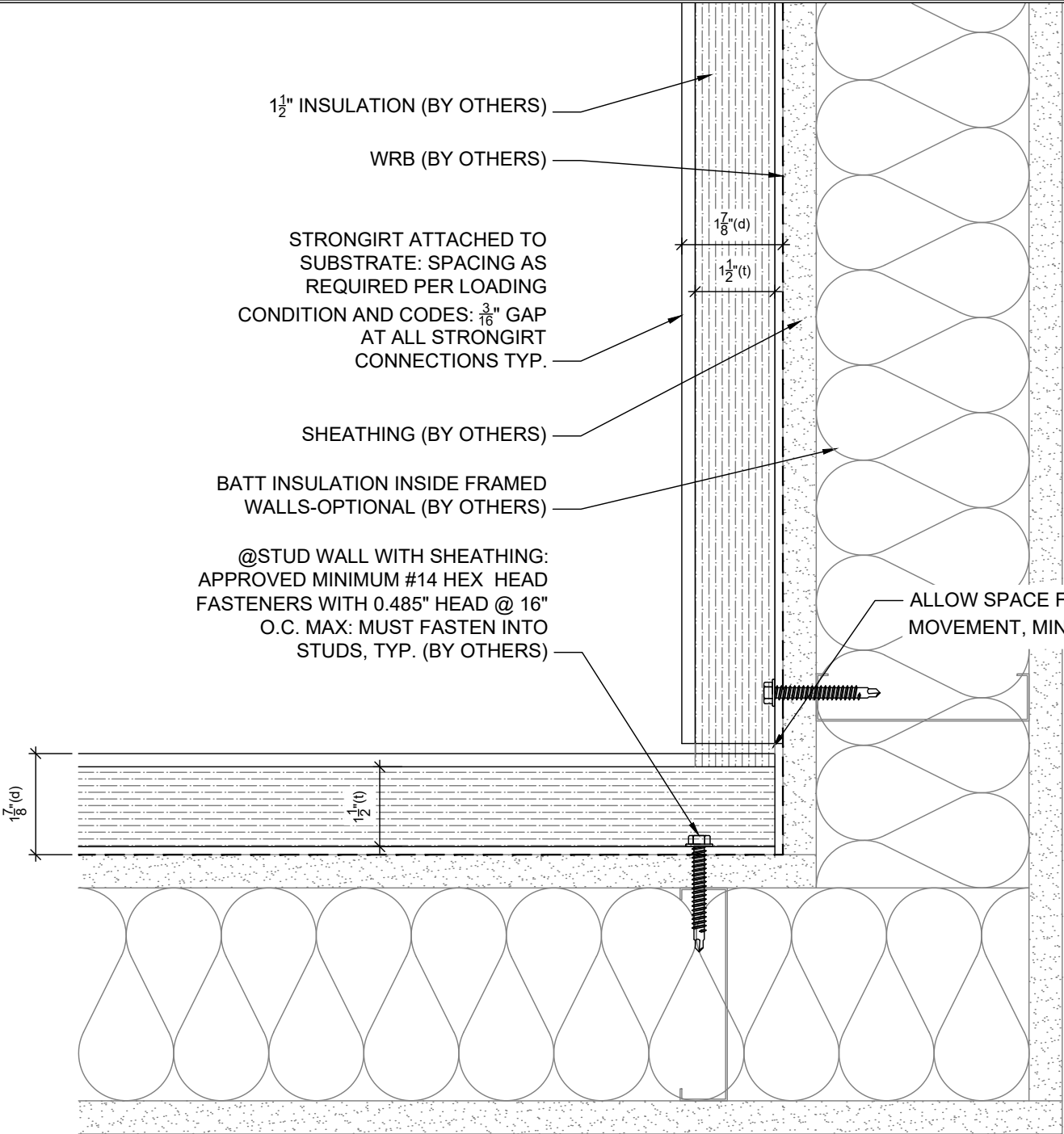
STRONGIRT PROFILES ARE DESIGNED TO ACCOMMODATE A RANGE OF INSULATION THICKNESS AS NOTED BELOW

INSULATION THICKNESS (t)	1.5" (38.1mm)	2" (50.8mm)	2.5" (63.5mm)	3" (76.2mm)	3.5" (88.9mm)	4" (101.6mm)	4.5" (114.3mm)	5" (127mm)	5.5" (139.7mm)	6" (152.4mm)	5.0"ULTRA (127mm)	5.5"ULTRA (127mm)	6.0"ULTRA (127mm)	8.0"ULTRA (127mm)
STRONGIRT DEPTH (d)	1.9" (48.3mm)	2.4" (61.0mm)	2.9" (73.7mm)	3.4" (86.4mm)	3.9" (99.1mm)	4.4" (111.8mm)	4.9" (124.5mm)	5.4" (137.2mm)	5.9" (149.9mm)	6.4" (162.6mm)	5.5" (140mm)	6.0" (152mm)	6.5" (165mm)	8.5" (216mm)

SUBSTRATE: SHEATHING / MASONRY	INSULATION: BY OTHERS (ALL)	FOUNDATION FLUSH DETAIL NOT TO SCALE
CLADDING: --- ---	DATE: 01-25-2023	
	GIRT ORIENTATION: HORIZONTAL	



NOTE: DETAILS ARE PROVIDED FOR INFORMATION ONLY, AND ARE SUBJECT TO CHANGE WITHOUT NOTICE. SPECIFIC PROJECT ENGINEERING BY OTHERS WILL ADDRESS ATTACHMENT SPACING, ORIENTATION AND LOADING. CONTACT STRONGWELL FOR FURTHER DETAIL, AND TO INQUIRY ABOUT UPDATES AND REVISIONS.



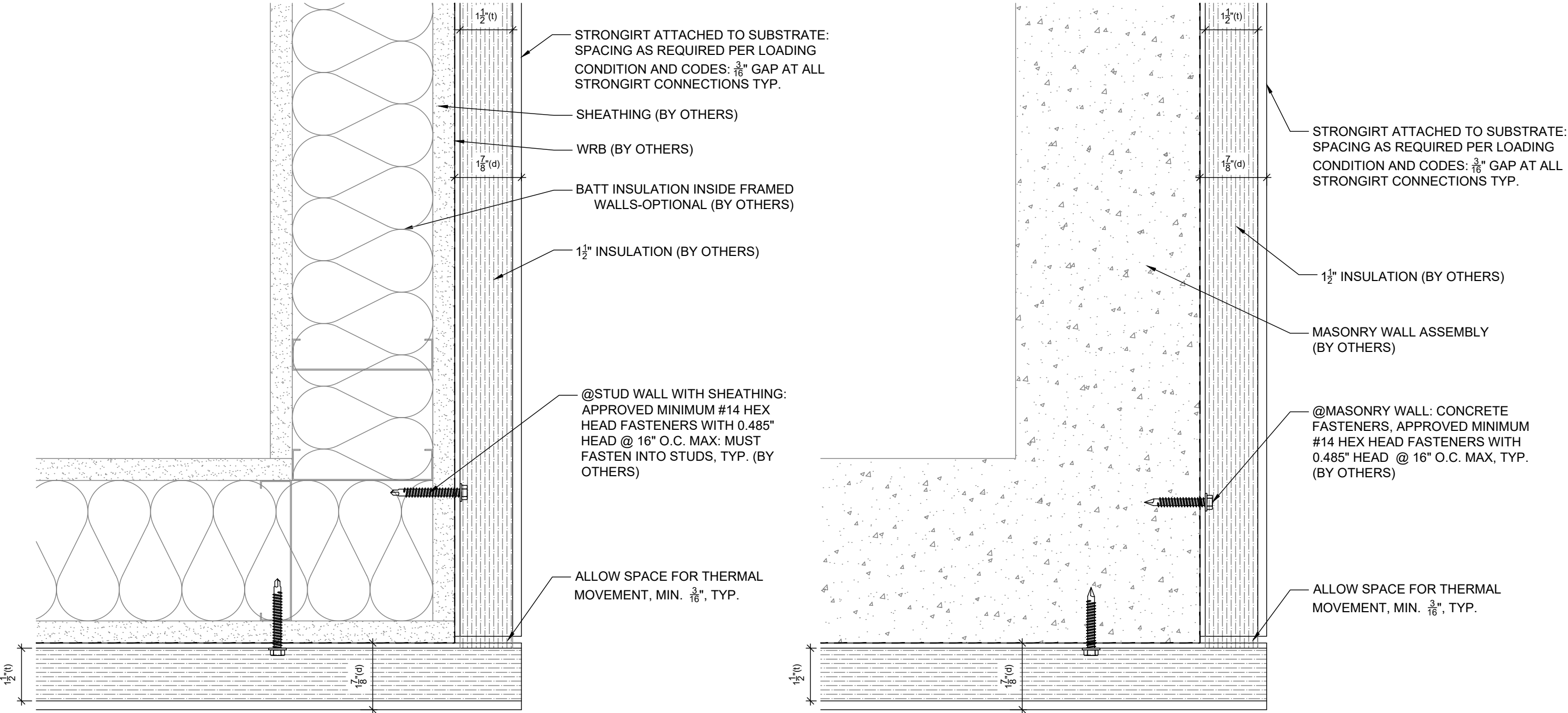
STRONGIRT PROFILES ARE DESIGNED TO ACCOMMODATE A RANGE OF INSULATION THICKNESS AS NOTED BELOW

INSULATION THICKNESS (t)	1.5" (38.1mm)	2" (50.8mm)	2.5" (63.5mm)	3" (76.2mm)	3.5" (88.9mm)	4" (101.6mm)	4.5" (114.3mm)	5" (127mm)	5.5" (139.7mm)	6" (152.4mm)	5.0"ULTRA (127mm)	5.5"ULTRA (127mm)	6.0"ULTRA (127mm)	8.0"ULTRA (127mm)
STRONGIRT DEPTH (d)	1.9" (48.3mm)	2.4" (61.0mm)	2.9" (73.7mm)	3.4" (86.4mm)	3.9" (99.1mm)	4.4" (111.8mm)	4.9" (124.5mm)	5.4" (137.2mm)	5.9" (149.9mm)	6.4" (162.6mm)	5.5" (140mm)	6.0" (152mm)	6.5" (165mm)	8.5" (216mm)

SUBSTRATE: SHEATHING / MASONRY	INSULATION: BY OTHERS (ALL)	INSIDE CORNER DETAIL NOT TO SCALE
CLADDING: --- ---	DATE: 01-25-2023	
	GIRT ORIENTATION: HORIZONTAL	



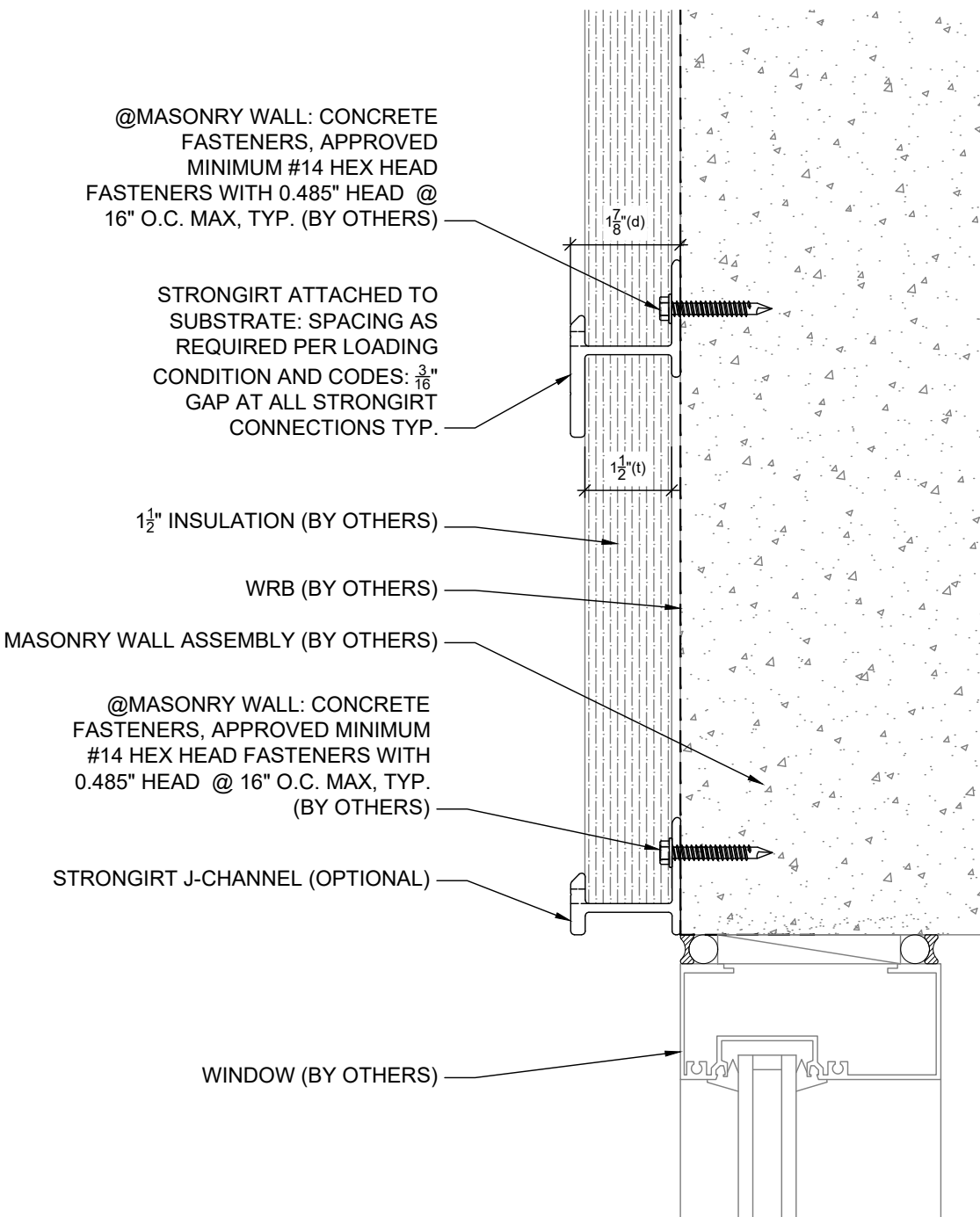
NOTE: DETAILS ARE PROVIDED FOR INFORMATION ONLY, AND ARE SUBJECT TO CHANGE WITHOUT NOTICE. SPECIFIC PROJECT ENGINEERING BY OTHERS WILL ADDRESS ATTACHMENT SPACING, ORIENTATION AND LOADING. CONTACT STRONGWELL FOR FURTHER DETAIL, AND TO INQUIRY ABOUT UPDATES AND REVISIONS.



STRONGGIRT PROFILES ARE DESIGNED TO ACCOMMODATE A RANGE OF INSULATION THICKNESS AS NOTED BELOW

INSULATION THICKNESS (t)	1.5" (38.1mm)	2" (50.8mm)	2.5" (63.5mm)	3" (76.2mm)	3.5" (88.9mm)	4" (101.6mm)	4.5" (114.3mm)	5" (127mm)	5.5" (139.7mm)	6" (152.4mm)	5.0"ULTRA (127mm)	5.5"ULTRA (127mm)	6.0"ULTRA (127mm)	8.0"ULTRA (127mm)
STRONGGIRT DEPTH (d)	1.9" (48.3mm)	2.4" (61.0mm)	2.9" (73.7mm)	3.4" (86.4mm)	3.9" (99.1mm)	4.4" (111.8mm)	4.9" (124.5mm)	5.4" (137.2mm)	5.9" (149.9mm)	6.4" (162.6mm)	5.5" (140mm)	6.0" (152mm)	6.5" (165mm)	8.5" (216mm)

SUBSTRATE: SHEATHING / MASONRY	INSULATION: BY OTHERS (ALL)	OUTSIDE CORNER DETAIL NOT TO SCALE
CLADDING: --- ---	DATE: 01-25-2023	
	GIRT ORIENTATION: HORIZONTAL	



STRONGIRT PROFILES ARE DESIGNED TO ACCOMMODATE A RANGE OF INSULATION THICKNESS AS NOTED BELOW

INSULATION THICKNESS (t)	1.5" (38.1mm)	2" (50.8mm)	2.5" (63.5mm)	3" (76.2mm)	3.5" (88.9mm)	4" (101.6mm)	4.5" (114.3mm)	5" (127mm)	5.5" (139.7mm)	6" (152.4mm)	5.0"ULTRA (127mm)	5.5"ULTRA (127mm)	6.0"ULTRA (127mm)	8.0"ULTRA (127mm)
STRONGIRT DEPTH (d)	1.9" (48.3mm)	2.4" (61.0mm)	2.9" (73.7mm)	3.4" (86.4mm)	3.9" (99.1mm)	4.4" (111.8mm)	4.9" (124.5mm)	5.4" (137.2mm)	5.9" (149.9mm)	6.4" (162.6mm)	5.5" (140mm)	6.0" (152mm)	6.5" (165mm)	8.5" (216mm)

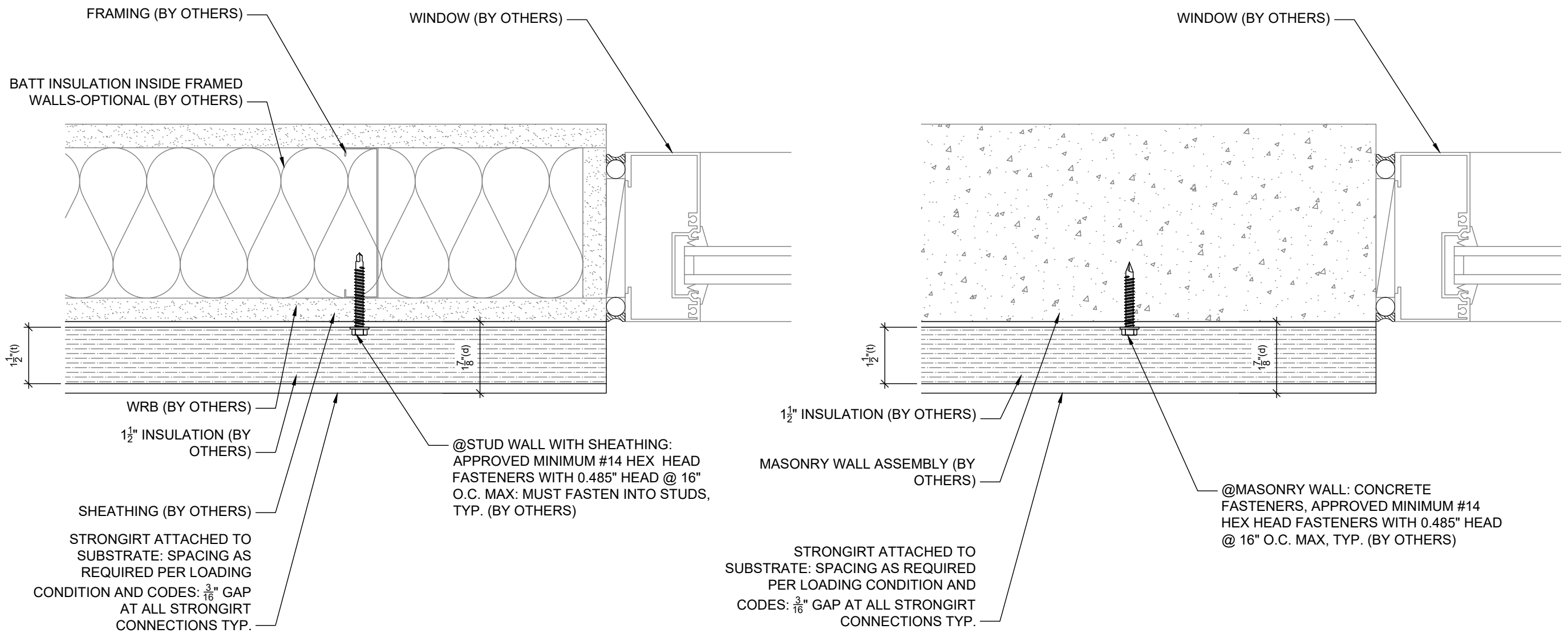
SUBSTRATE: SHEATHING / MASONRY	INSULATION: BY OTHERS (ALL)
CLADDING: --- ---	DATE: 01-25-2023
	GIRT ORIENTATION: HORIZONTAL

HEADER DETAIL

NOT TO SCALE



NOTE: DETAILS ARE PROVIDED FOR INFORMATION ONLY, AND ARE SUBJECT TO CHANGE WITHOUT NOTICE. SPECIFIC PROJECT ENGINEERING BY OTHERS WILL ADDRESS ATTACHMENT SPACING, ORIENTATION AND LOADING. CONTACT STRONGWELL FOR FURTHER DETAIL, AND TO INQUIRY ABOUT UPDATES AND REVISIONS.



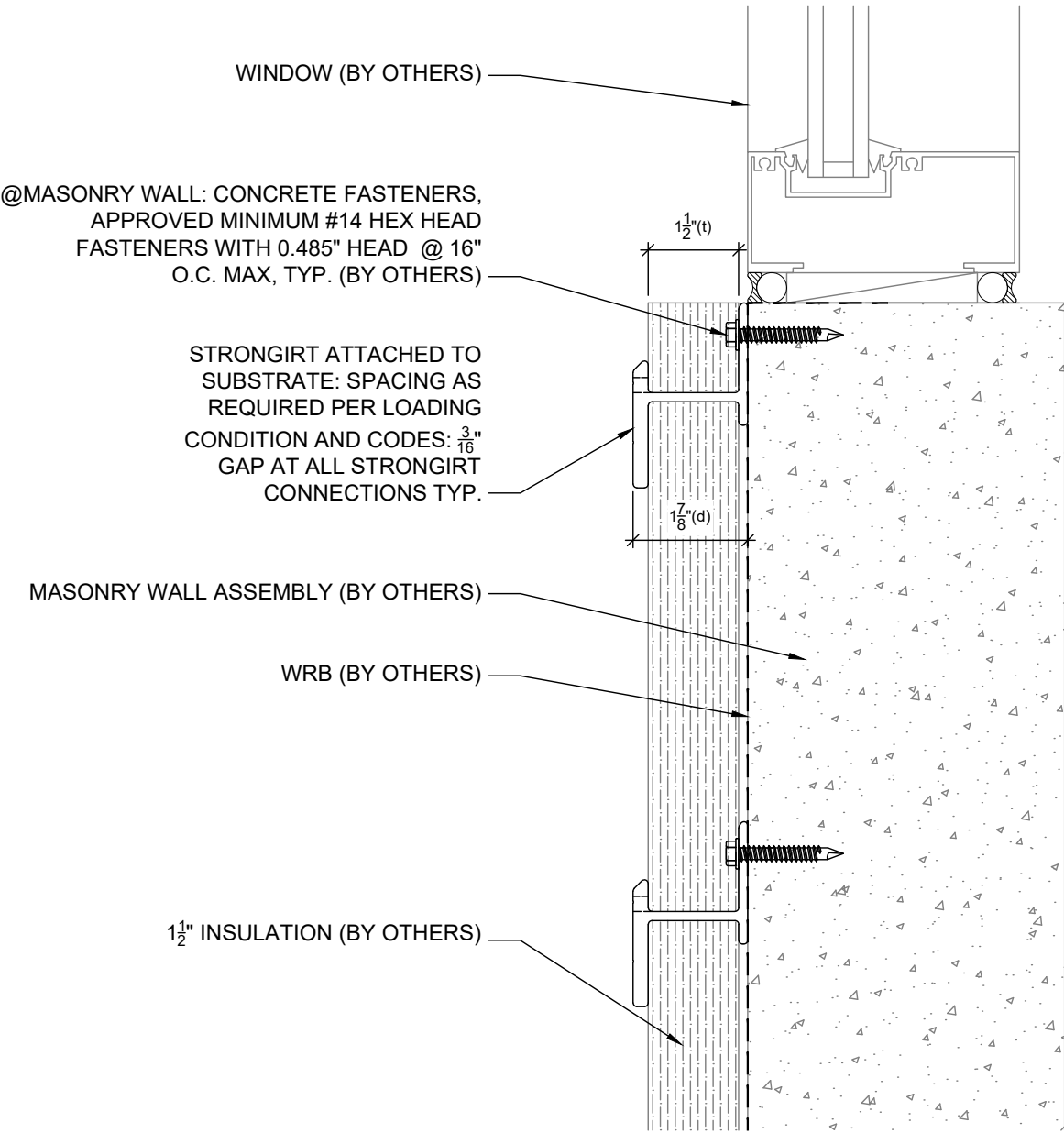
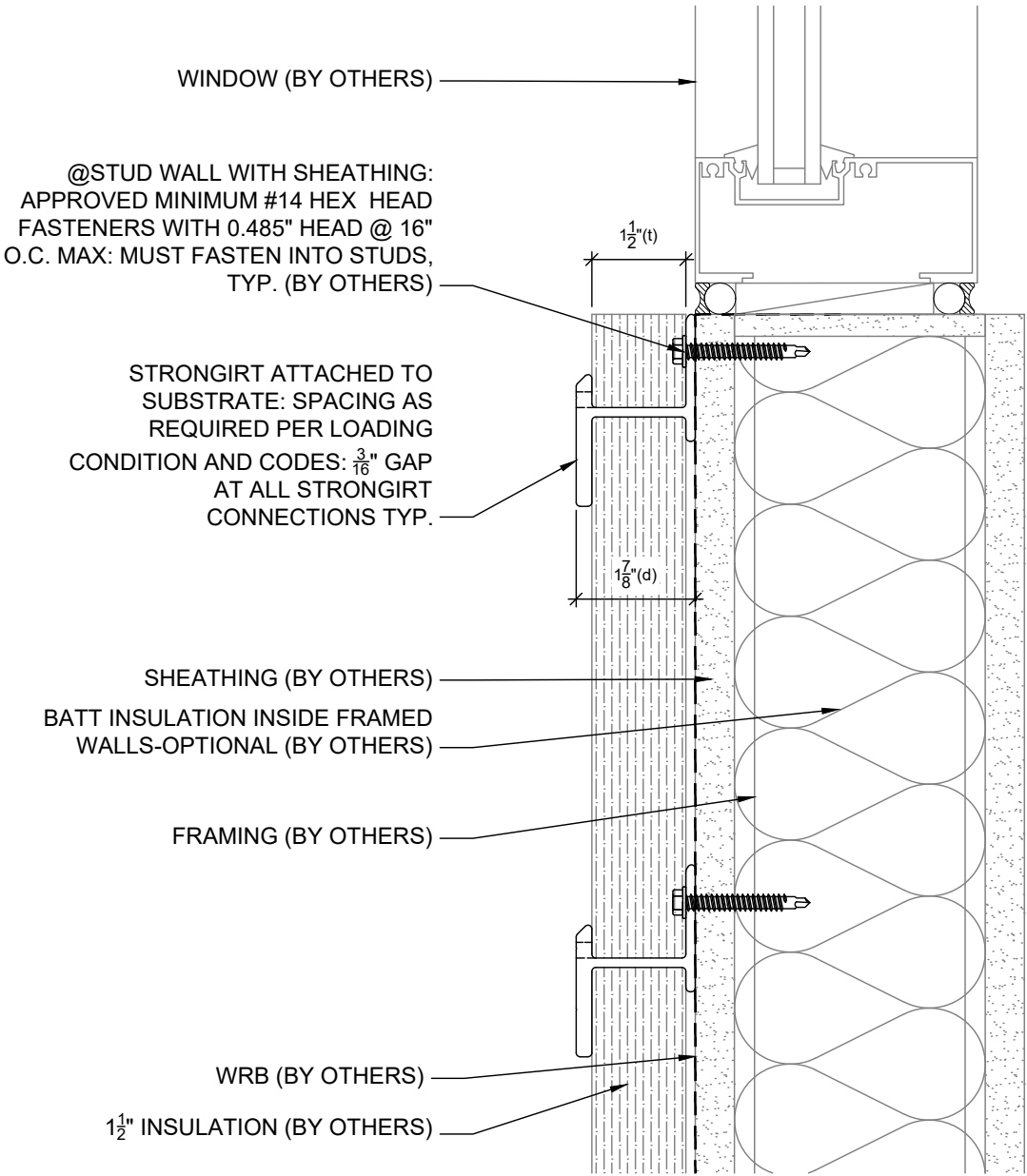
STRONGIRT PROFILES ARE DESIGNED TO ACCOMMODATE A RANGE OF INSULATION THICKNESS AS NOTED BELOW

INSULATION THICKNESS (t)	1.5" (38.1mm)	2" (50.8mm)	2.5" (63.5mm)	3" (76.2mm)	3.5" (88.9mm)	4" (101.6mm)	4.5" (114.3mm)	5" (127mm)	5.5" (139.7mm)	6" (152.4mm)	5.0"ULTRA (127mm)	5.5"ULTRA (127mm)	6.0"ULTRA (127mm)	8.0"ULTRA (127mm)
STRONGIRT DEPTH (d)	1.9" (48.3mm)	2.4" (61.0mm)	2.9" (73.7mm)	3.4" (86.4mm)	3.9" (99.1mm)	4.4" (111.8mm)	4.9" (124.5mm)	5.4" (137.2mm)	5.9" (149.9mm)	6.4" (162.6mm)	5.5" (140mm)	6.0" (152mm)	6.5" (165mm)	8.5" (216mm)

SUBSTRATE: SHEATHING / MASONRY	INSULATION: BY OTHERS (ALL)	JAMB DETAIL NOT TO SCALE
CLADDING: --- ---	DATE: 01-25-2023	
	GIRT ORIENTATION: HORIZONTAL	



NOTE: DETAILS ARE PROVIDED FOR INFORMATION ONLY, AND ARE SUBJECT TO CHANGE WITHOUT NOTICE. SPECIFIC PROJECT ENGINEERING BY OTHERS WILL ADDRESS ATTACHMENT SPACING, ORIENTATION AND LOADING. CONTACT STRONGWELL FOR FURTHER DETAIL, AND TO INQUIRY ABOUT UPDATES AND REVISIONS.



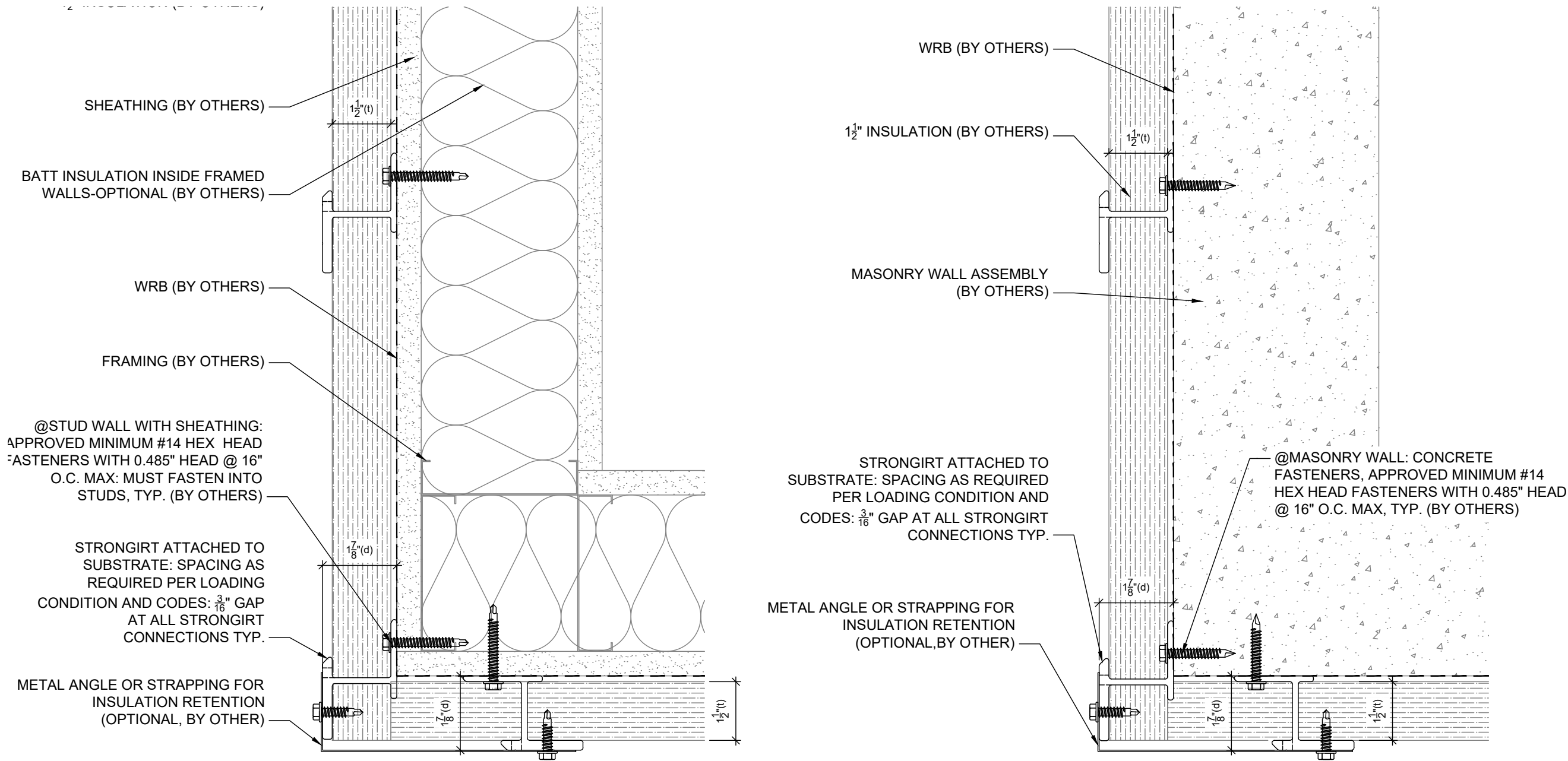
STRONGIRT PROFILES ARE DESIGNED TO ACCOMMODATE A RANGE OF INSULATION THICKNESS AS NOTED BELOW

INSULATION THICKNESS (t)	1.5" (38.1mm)	2" (50.8mm)	2.5" (63.5mm)	3" (76.2mm)	3.5" (88.9mm)	4" (101.6mm)	4.5" (114.3mm)	5" (127mm)	5.5" (139.7mm)	6" (152.4mm)	5.0"ULTRA (127mm)	5.5"ULTRA (127mm)	6.0"ULTRA (127mm)	8.0"ULTRA (127mm)
STRONGIRT DEPTH (d)	1.9" (48.3mm)	2.4" (61.0mm)	2.9" (73.7mm)	3.4" (86.4mm)	3.9" (99.1mm)	4.4" (111.8mm)	4.9" (124.5mm)	5.4" (137.2mm)	5.9" (149.9mm)	6.4" (162.6mm)	5.5" (140mm)	6.0" (152mm)	6.5" (165mm)	8.5" (216mm)

SUBSTRATE: SHEATHING / MASONRY	INSULATION: BY OTHERS (ALL)	SILL DETAIL NOT TO SCALE
CLADDING: --- ---	DATE: 01-25-2023	
	GIRT ORIENTATION: HORIZONTAL	



NOTE: DETAILS ARE PROVIDED FOR INFORMATION ONLY, AND ARE SUBJECT TO CHANGE WITHOUT NOTICE. SPECIFIC PROJECT ENGINEERING BY OTHERS WILL ADDRESS ATTACHMENT SPACING, ORIENTATION AND LOADING. CONTACT STRONGWELL FOR FURTHER DETAIL, AND TO INQUIRY ABOUT UPDATES AND REVISIONS.



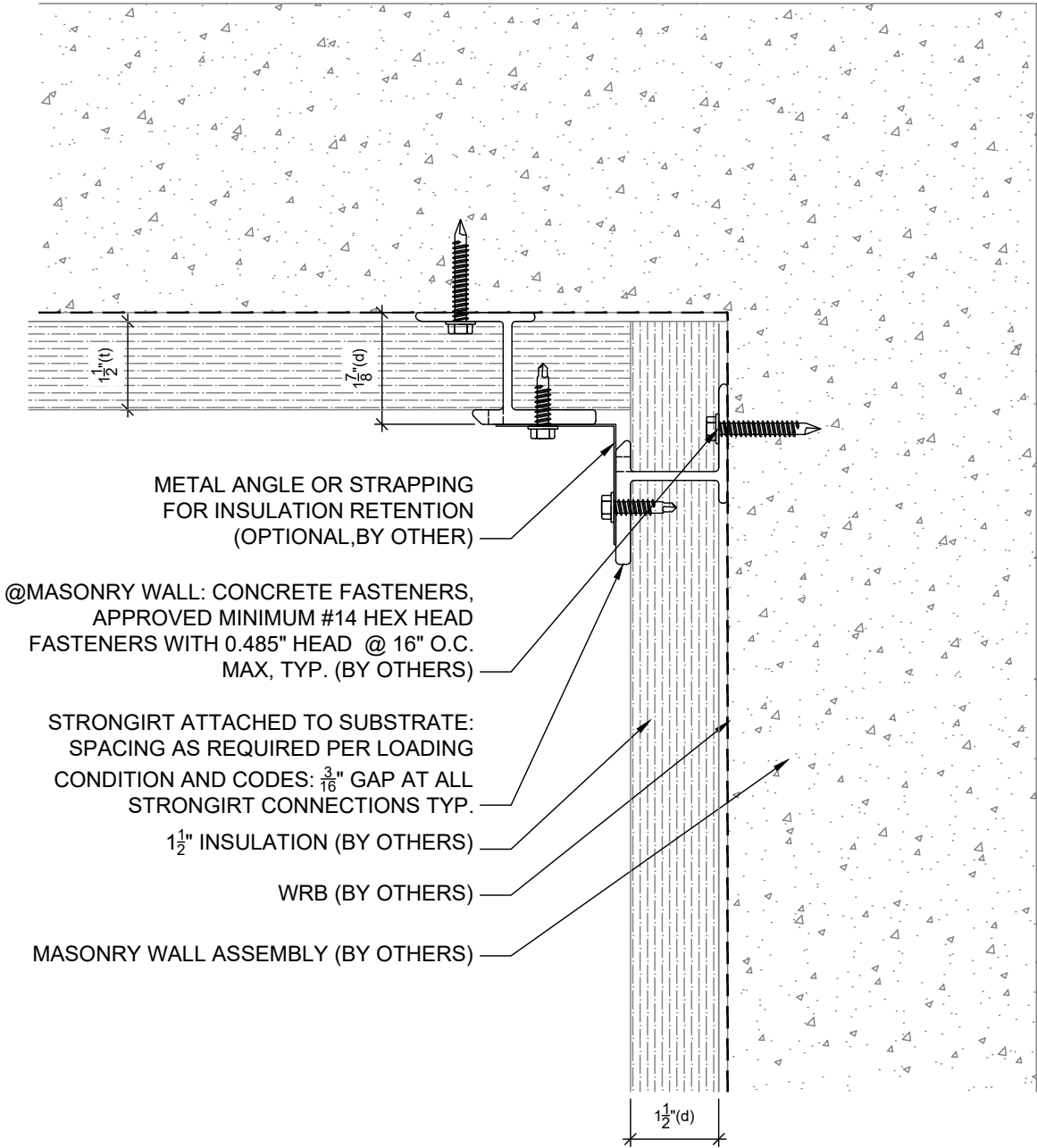
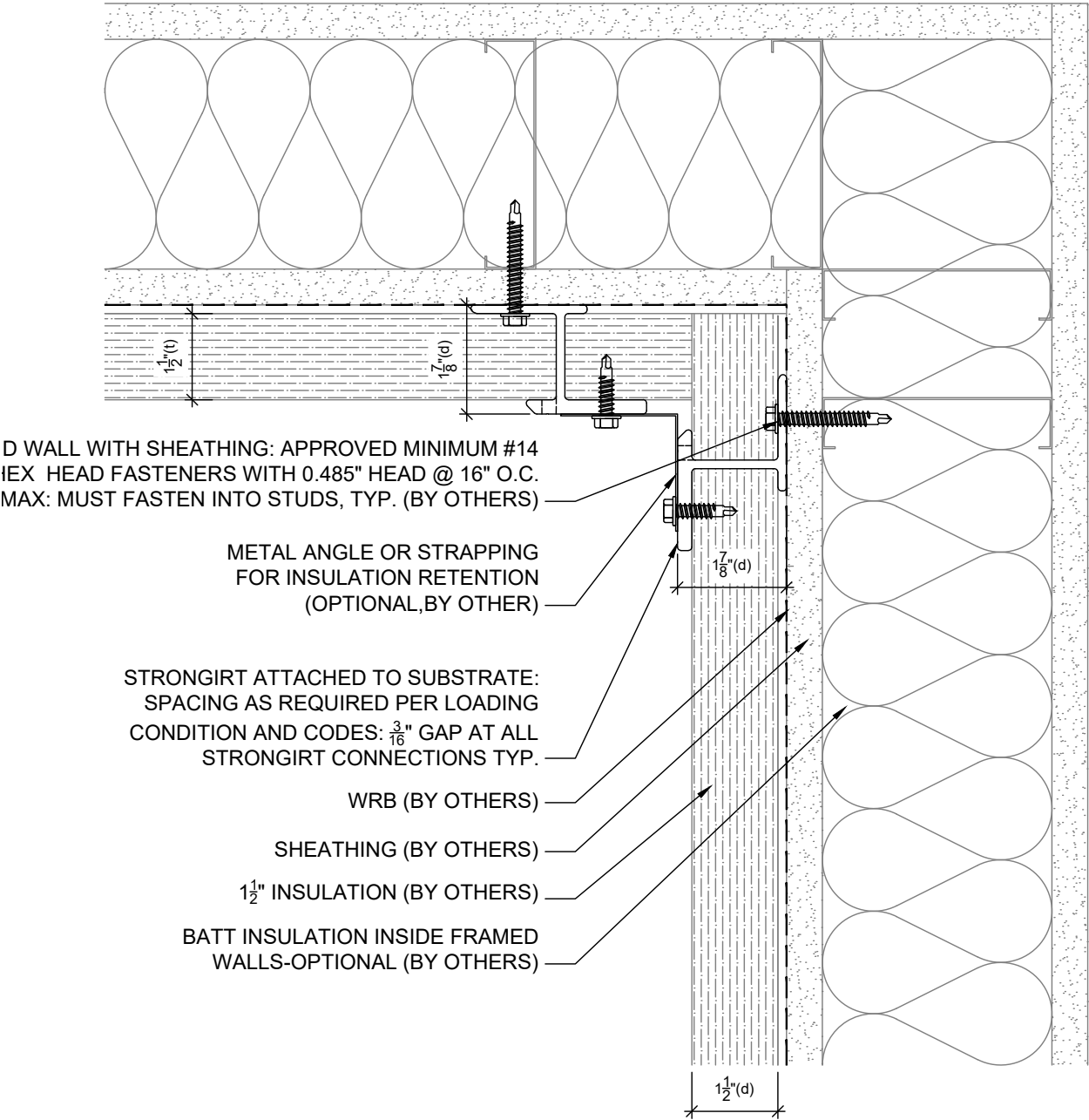
STRONGIRT PROFILES ARE DESIGNED TO ACCOMMODATE A RANGE OF INSULATION THICKNESS AS NOTED BELOW

INSULATION THICKNESS (t)	1.5" (38.1mm)	2" (50.8mm)	2.5" (63.5mm)	3" (76.2mm)	3.5" (88.9mm)	4" (101.6mm)	4.5" (114.3mm)	5" (127mm)	5.5" (139.7mm)	6" (152.4mm)	5.0"ULTRA (127mm)	5.5"ULTRA (127mm)	6.0"ULTRA (127mm)	8.0"ULTRA (127mm)
STRONGIRT DEPTH (d)	1.9" (48.3mm)	2.4" (61.0mm)	2.9" (73.7mm)	3.4" (86.4mm)	3.9" (99.1mm)	4.4" (111.8mm)	4.9" (124.5mm)	5.4" (137.2mm)	5.9" (149.9mm)	6.4" (162.6mm)	5.5" (140mm)	6.0" (152mm)	6.5" (165mm)	8.5" (216mm)

SUBSTRATE: SHEATHING / MASONRY	INSULATION: BY OTHERS (ALL)	SOFFIT OUTSIDE DETAIL-1 NOT TO SCALE
CLADDING: --- ---	DATE: 01-25-2023	
	GIRT ORIENTATION: HORIZONTAL	



NOTE: DETAILS ARE PROVIDED FOR INFORMATION ONLY, AND ARE SUBJECT TO CHANGE WITHOUT NOTICE. SPECIFIC PROJECT ENGINEERING BY OTHERS WILL ADDRESS ATTACHMENT SPACING, ORIENTATION AND LOADING. CONTACT STRONGWELL FOR FURTHER DETAIL, AND TO INQUIRY ABOUT UPDATES AND REVISIONS.



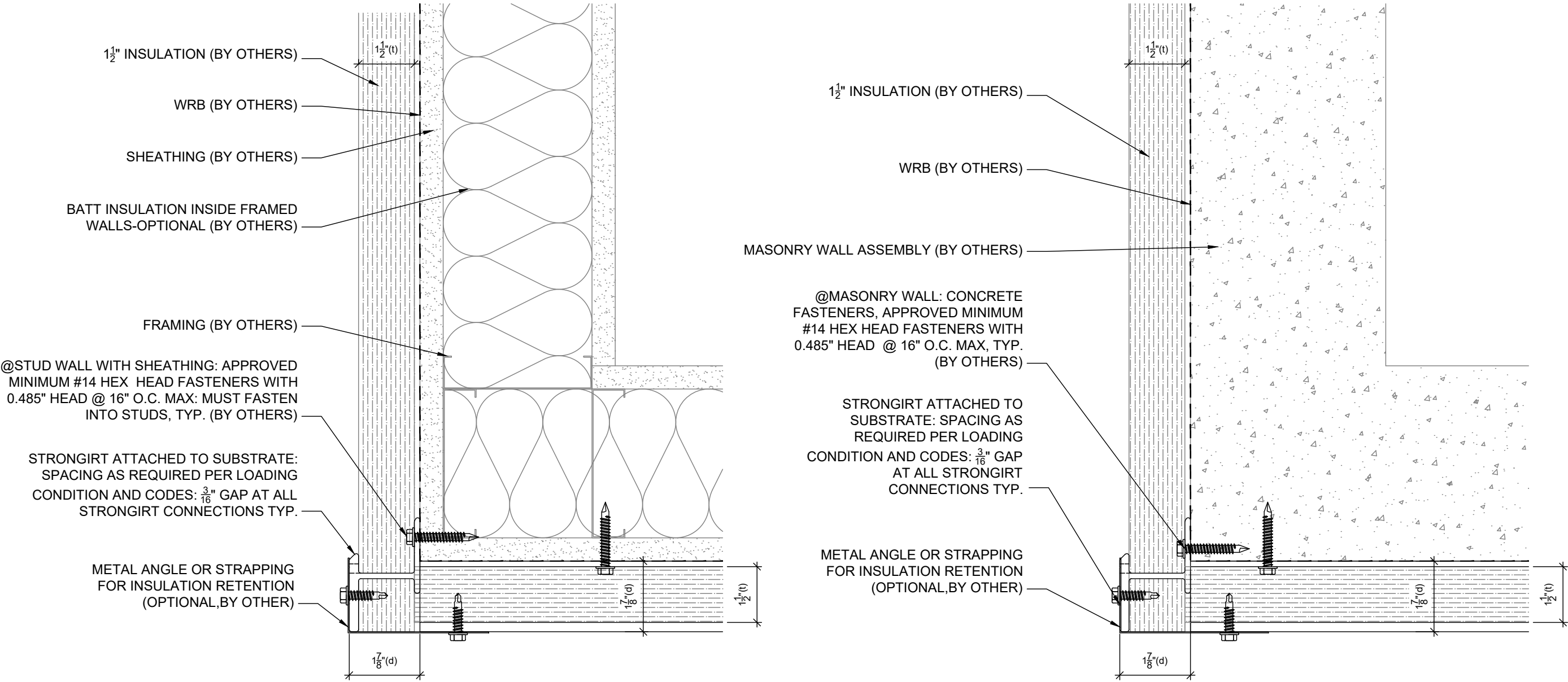
STRONGGIRT PROFILES ARE DESIGNED TO ACCOMMODATE A RANGE OF INSULATION THICKNESS AS NOTED BELOW

INSULATION THICKNESS (t)	1.5" (38.1mm)	2" (50.8mm)	2.5" (63.5mm)	3" (76.2mm)	3.5" (88.9mm)	4" (101.6mm)	4.5" (114.3mm)	5" (127mm)	5.5" (139.7mm)	6" (152.4mm)	5.0"ULTRA (127mm)	5.5"ULTRA (127mm)	6.0"ULTRA (127mm)	8.0"ULTRA (127mm)
STRONGGIRT DEPTH (d)	1.9" (48.3mm)	2.4" (61.0mm)	2.9" (73.7mm)	3.4" (86.4mm)	3.9" (99.1mm)	4.4" (111.8mm)	4.9" (124.5mm)	5.4" (137.2mm)	5.9" (149.9mm)	6.4" (162.6mm)	5.5" (140mm)	6.0" (152mm)	6.5" (165mm)	8.5" (216mm)

SUBSTRATE: SHEATHING / MASONRY	INSULATION: BY OTHERS (ALL)	SOFFIT INSIDE DETAIL-1 NOT TO SCALE
CLADDING: --- ---	DATE: 01-25-2023	
	GIRT ORIENTATION: HORIZONTAL	



NOTE: DETAILS ARE PROVIDED FOR INFORMATION ONLY, AND ARE SUBJECT TO CHANGE WITHOUT NOTICE. SPECIFIC PROJECT ENGINEERING BY OTHERS WILL ADDRESS ATTACHMENT SPACING, ORIENTATION AND LOADING. CONTACT STRONGWELL FOR FURTHER DETAIL, AND TO INQUIRY ABOUT UPDATES AND REVISIONS.



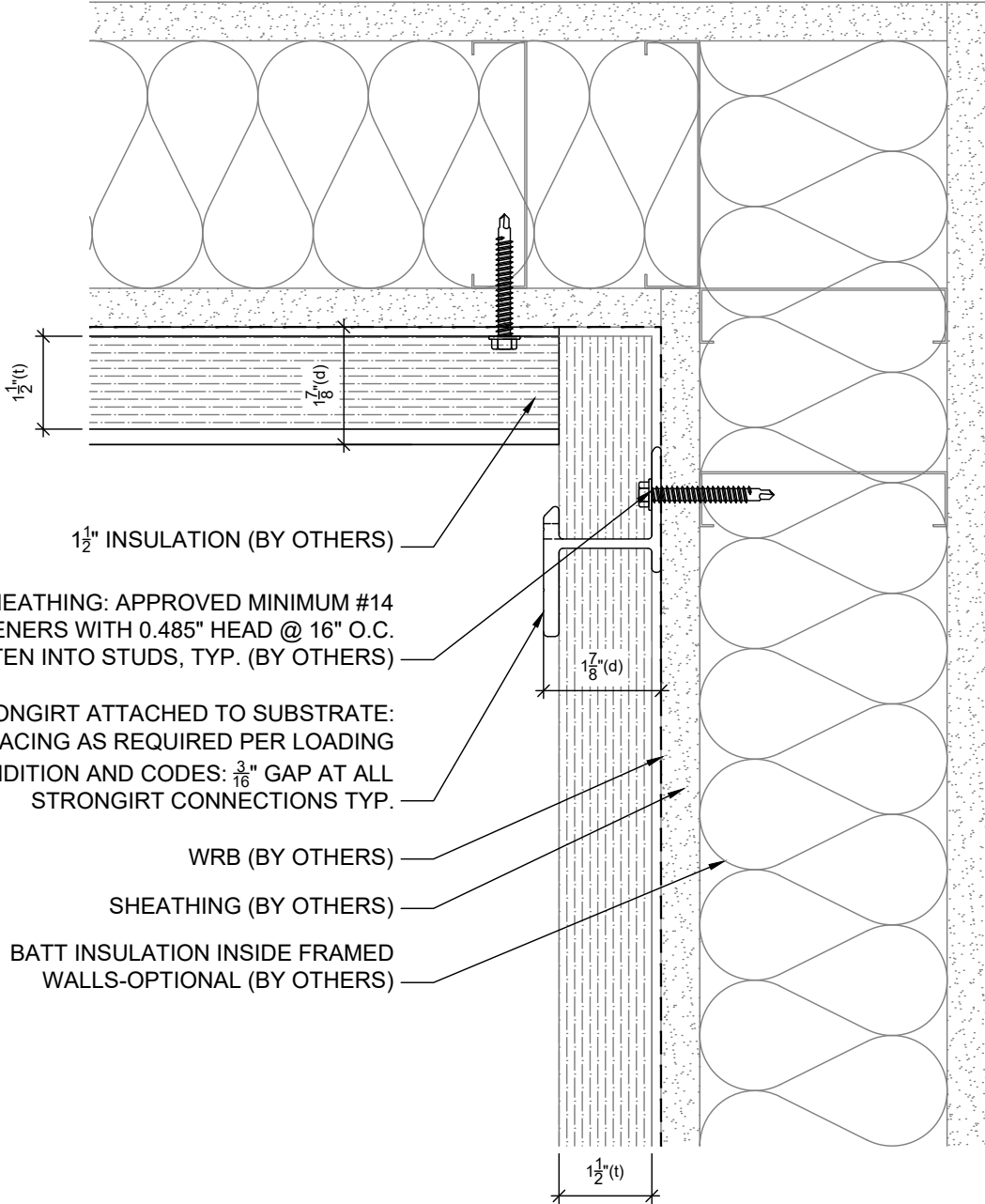
STRONGGIRT PROFILES ARE DESIGNED TO ACCOMMODATE A RANGE OF INSULATION THICKNESS AS NOTED BELOW

INSULATION THICKNESS (t)	1.5" (38.1mm)	2" (50.8mm)	2.5" (63.5mm)	3" (76.2mm)	3.5" (88.9mm)	4" (101.6mm)	4.5" (114.3mm)	5" (127mm)	5.5" (139.7mm)	6" (152.4mm)	5.0"ULTRA (127mm)	5.5"ULTRA (127mm)	6.0"ULTRA (127mm)	8.0"ULTRA (127mm)
STRONGGIRT DEPTH (d)	1.9" (48.3mm)	2.4" (61.0mm)	2.9" (73.7mm)	3.4" (86.4mm)	3.9" (99.1mm)	4.4" (111.8mm)	4.9" (124.5mm)	5.4" (137.2mm)	5.9" (149.9mm)	6.4" (162.6mm)	5.5" (140mm)	6.0" (152mm)	6.5" (165mm)	8.5" (216mm)

SUBSTRATE: SHEATHING / MASONRY	INSULATION: BY OTHERS (ALL)	SOFFIT OUTSIDE DETAIL-2 NOT TO SCALE
CLADDING: --- ---	DATE: 01-25-2023	
	GIRT ORIENTATION: HORIZONTAL	



NOTE: DETAILS ARE PROVIDED FOR INFORMATION ONLY, AND ARE SUBJECT TO CHANGE WITHOUT NOTICE. SPECIFIC PROJECT ENGINEERING BY OTHERS WILL ADDRESS ATTACHMENT SPACING, ORIENTATION AND LOADING. CONTACT STRONGWELL FOR FURTHER DETAIL, AND TO INQUIRY ABOUT UPDATES AND REVISIONS.



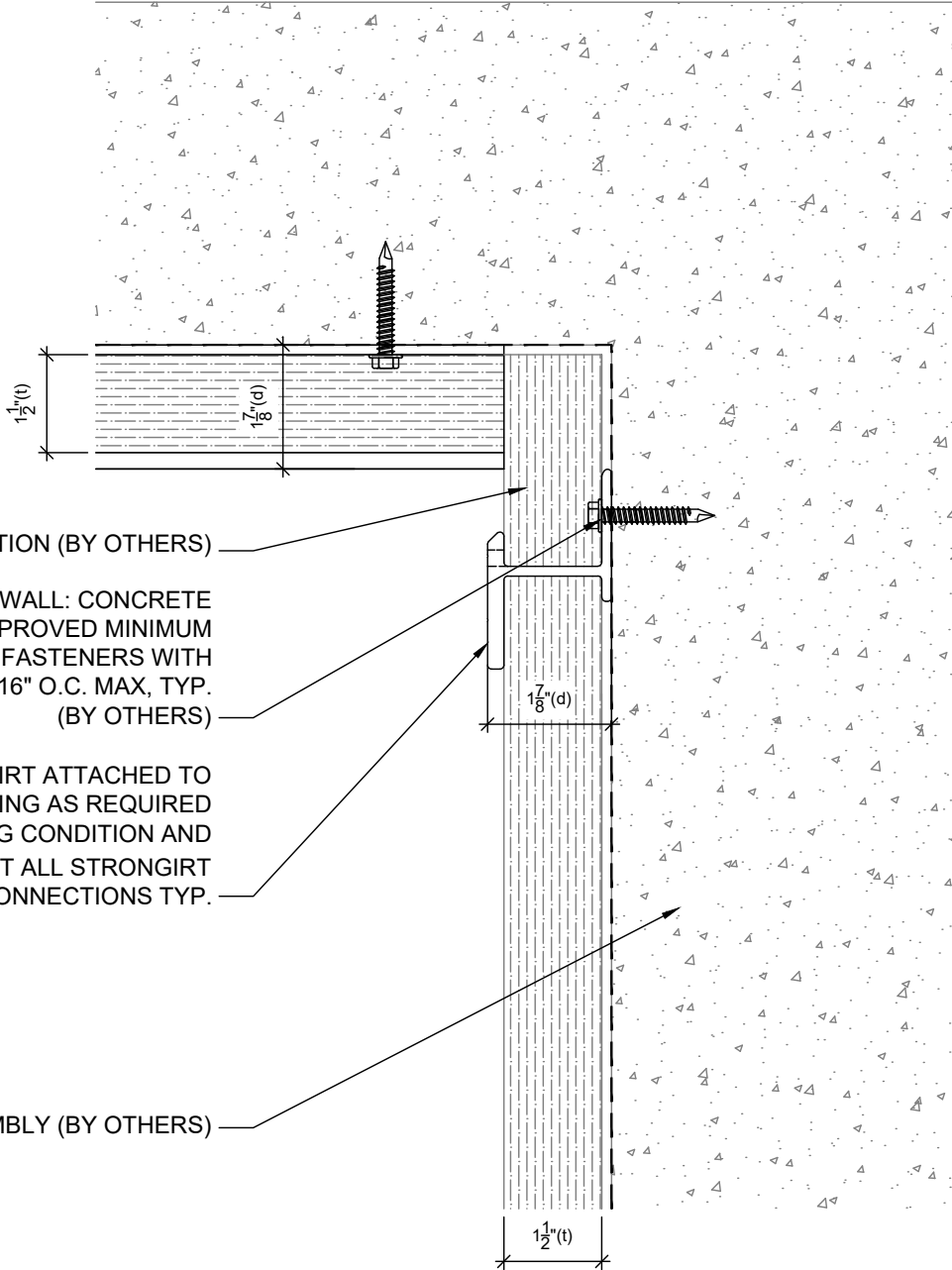
@STUD WALL WITH SHEATHING: APPROVED MINIMUM #14
HEX HEAD FASTENERS WITH 0.485" HEAD @ 16" O.C.
MAX: MUST FASTEN INTO STUDS, TYP. (BY OTHERS)

STRONGIRT ATTACHED TO SUBSTRATE:
SPACING AS REQUIRED PER LOADING
CONDITION AND CODES: 3/16" GAP AT ALL
STRONGIRT CONNECTIONS TYP.

WRB (BY OTHERS)

SHEATHING (BY OTHERS)

BATT INSULATION INSIDE FRAMED
WALLS-OPTIONAL (BY OTHERS)



1 1/2" INSULATION (BY OTHERS)

@MASONRY WALL: CONCRETE
FASTENERS, APPROVED MINIMUM
#14 HEX HEAD FASTENERS WITH
0.485" HEAD @ 16" O.C. MAX, TYP.
(BY OTHERS)

STRONGIRT ATTACHED TO
SUBSTRATE: SPACING AS REQUIRED
PER LOADING CONDITION AND
CODES: 3/16" GAP AT ALL STRONGIRT
CONNECTIONS TYP.

MASONRY WALL ASSEMBLY (BY OTHERS)

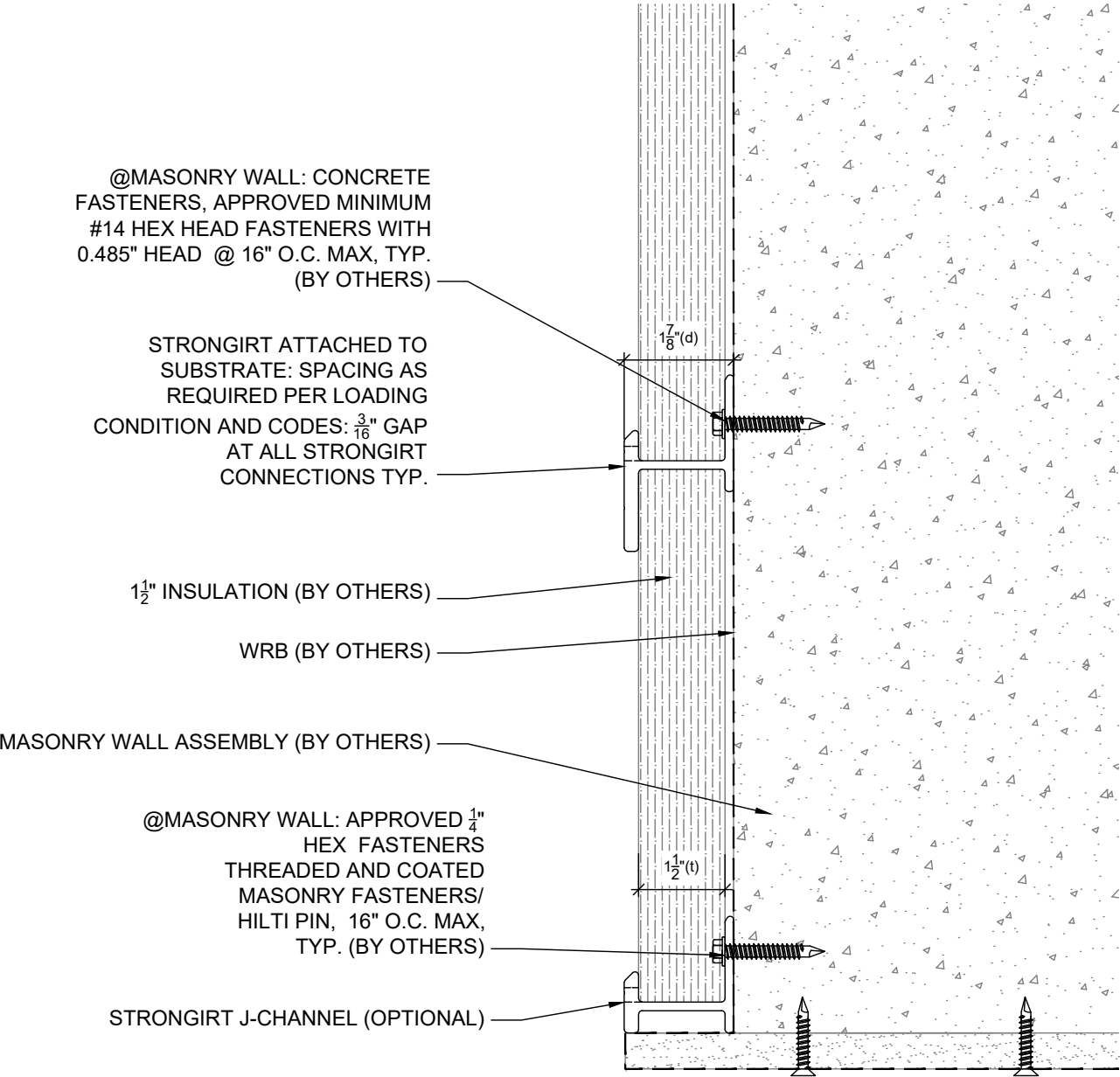
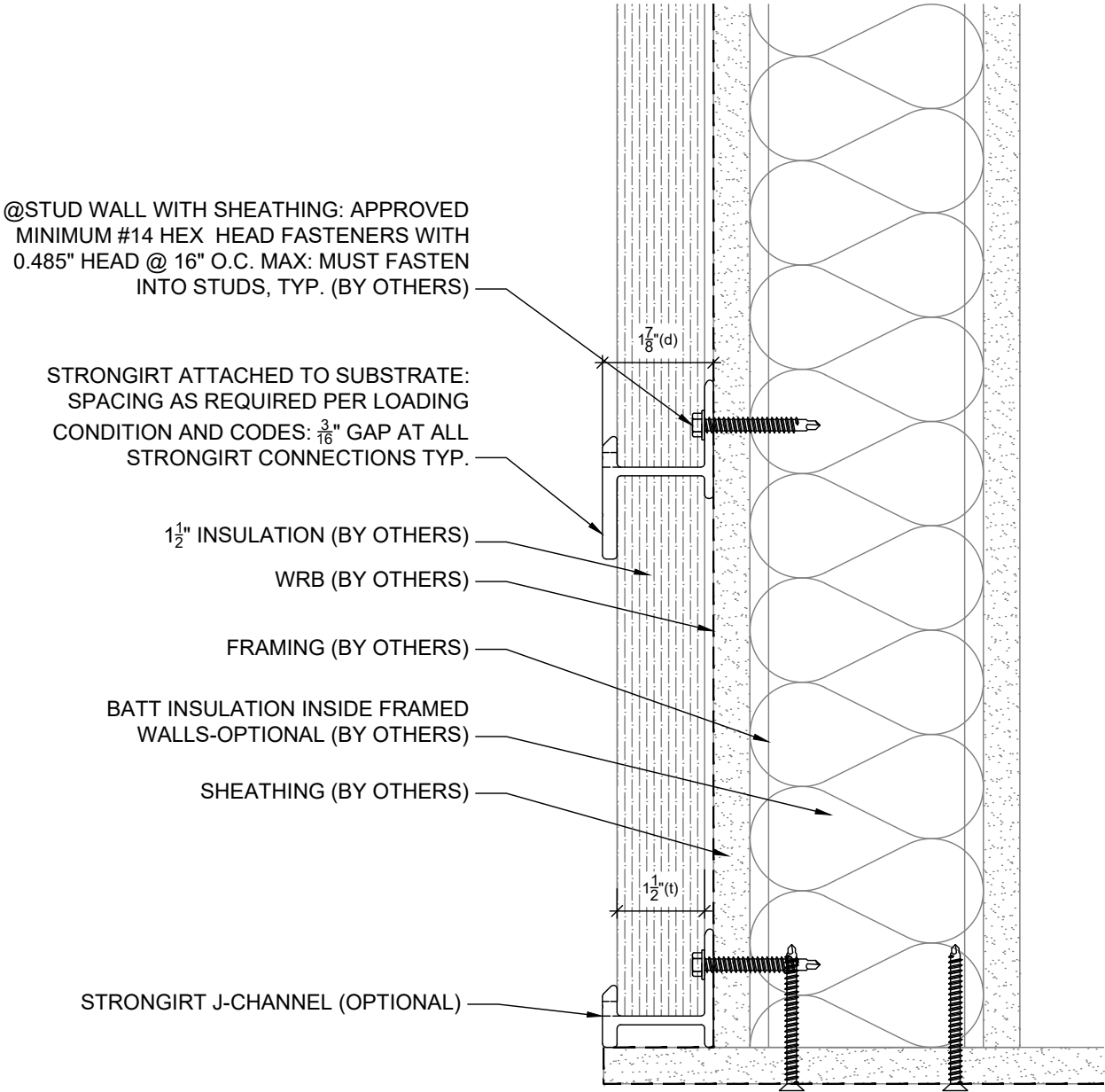
STRONGIRT PROFILES ARE DESIGNED TO ACCOMMODATE A RANGE OF INSULATION THICKNESS AS NOTED BELOW

INSULATION THICKNESS (t)	1.5" (38.1mm)	2" (50.8mm)	2.5" (63.5mm)	3" (76.2mm)	3.5" (88.9mm)	4" (101.6mm)	4.5" (114.3mm)	5" (127mm)	5.5" (139.7mm)	6" (152.4mm)	5.0"ULTRA (127mm)	5.5"ULTRA (127mm)	6.0"ULTRA (127mm)	8.0"ULTRA (127mm)
STRONGIRT DEPTH (d)	1.9" (48.3mm)	2.4" (61.0mm)	2.9" (73.7mm)	3.4" (86.4mm)	3.9" (99.1mm)	4.4" (111.8mm)	4.9" (124.5mm)	5.4" (137.2mm)	5.9" (149.9mm)	6.4" (162.6mm)	5.5" (140mm)	6.0" (152mm)	6.5" (165mm)	8.5" (216mm)

SUBSTRATE: SHEATHING / MASONRY	INSULATION: BY OTHERS (ALL)	SOFFIT INSIDE DETAIL-2 NOT TO SCALE
CLADDING: --- ---	DATE: 01-25-2023	
	GIRT ORIENTATION: HORIZONTAL	



NOTE: DETAILS ARE PROVIDED FOR INFORMATION ONLY, AND ARE SUBJECT TO CHANGE WITHOUT NOTICE. SPECIFIC PROJECT ENGINEERING BY OTHERS WILL ADDRESS ATTACHMENT SPACING, ORIENTATION AND LOADING. CONTACT STRONGWELL FOR FURTHER DETAIL, AND TO INQUIRY ABOUT UPDATES AND REVISIONS.



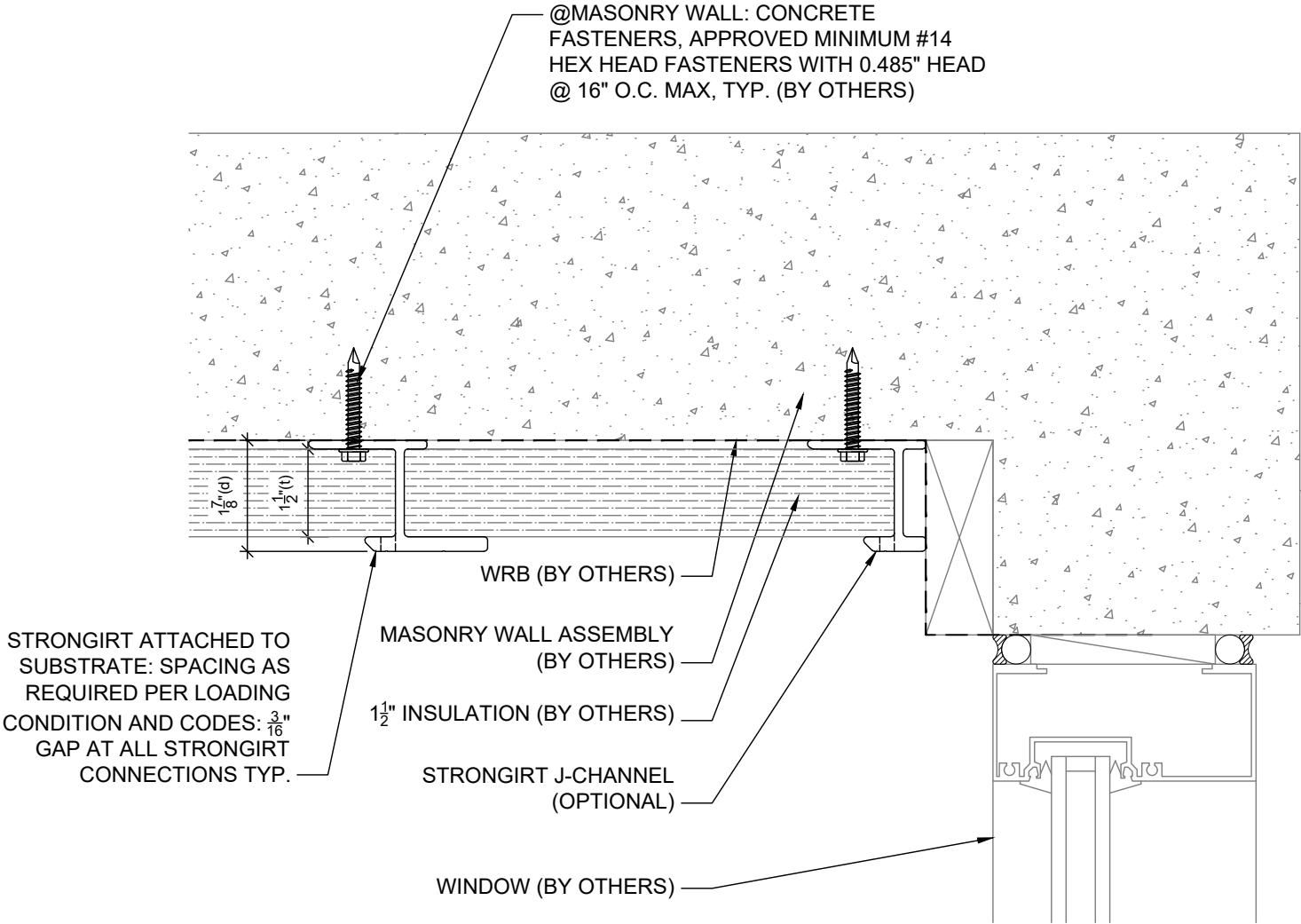
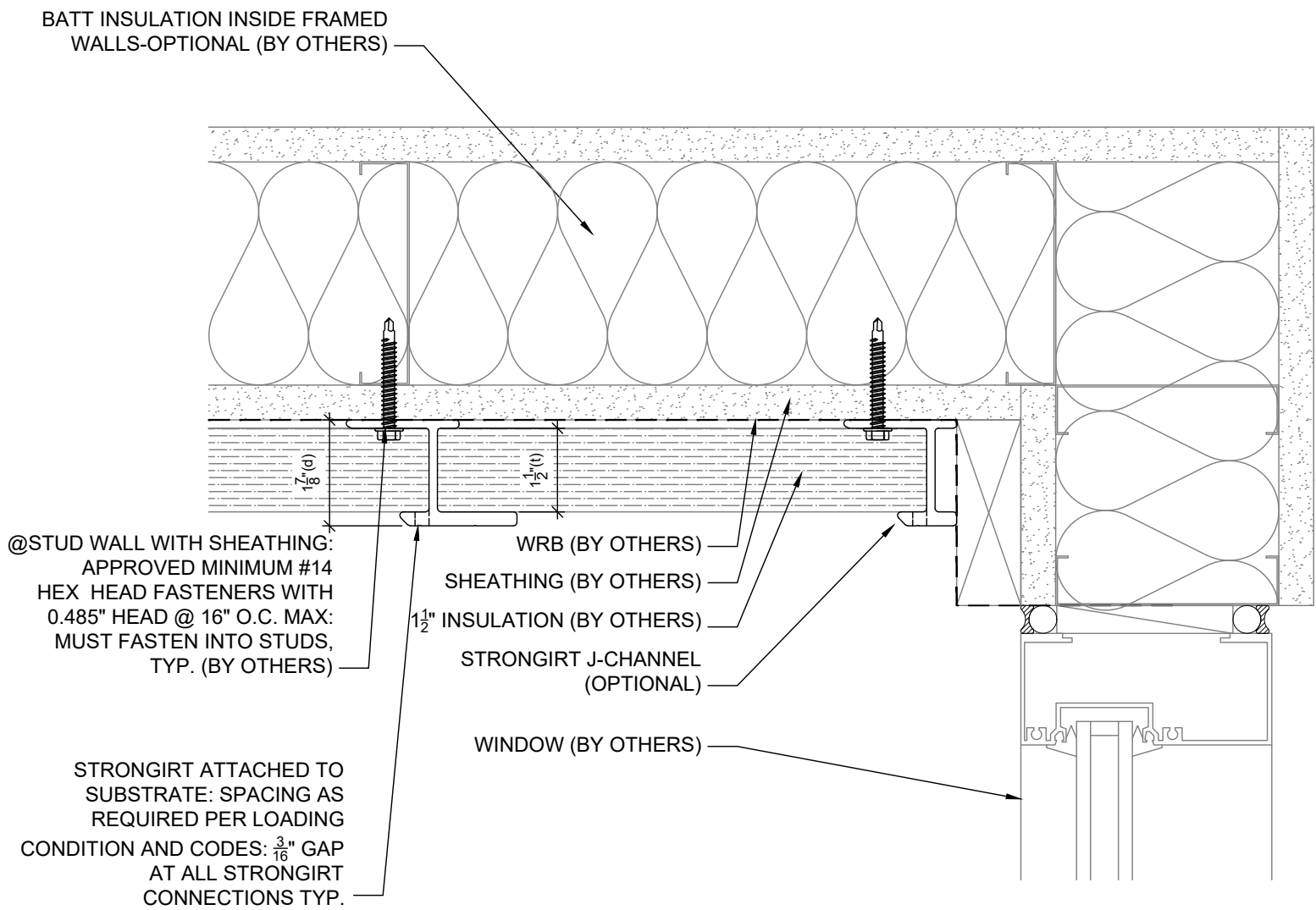
STRONGIRT PROFILES ARE DESIGNED TO ACCOMMODATE A RANGE OF INSULATION THICKNESS AS NOTED BELOW

INSULATION THICKNESS (t)	1.5" (38.1mm)	2" (50.8mm)	2.5" (63.5mm)	3" (76.2mm)	3.5" (88.9mm)	4" (101.6mm)	4.5" (114.3mm)	5" (127mm)	5.5" (139.7mm)	6" (152.4mm)	5.0"ULTRA (127mm)	5.5"ULTRA (127mm)	6.0"ULTRA (127mm)	8.0"ULTRA (127mm)
STRONGIRT DEPTH (d)	1.9" (48.3mm)	2.4" (61.0mm)	2.9" (73.7mm)	3.4" (86.4mm)	3.9" (99.1mm)	4.4" (111.8mm)	4.9" (124.5mm)	5.4" (137.2mm)	5.9" (149.9mm)	6.4" (162.6mm)	5.5" (140mm)	6.0" (152mm)	6.5" (165mm)	8.5" (216mm)

SUBSTRATE: SHEATHING / MASONRY	INSULATION: BY OTHERS (ALL)	SOFFIT OUTSIDE DETAIL-3 NOT TO SCALE
CLADDING: --- ---	DATE: 01-25-2023	
	GIRT ORIENTATION: HORIZONTAL	



NOTE: DETAILS ARE PROVIDED FOR INFORMATION ONLY, AND ARE SUBJECT TO CHANGE WITHOUT NOTICE. SPECIFIC PROJECT ENGINEERING BY OTHERS WILL ADDRESS ATTACHMENT SPACING, ORIENTATION AND LOADING. CONTACT STRONGWELL FOR FURTHER DETAIL, AND TO INQUIRY ABOUT UPDATES AND REVISIONS.



STRONGIRT PROFILES ARE DESIGNED TO ACCOMMODATE A RANGE OF INSULATION THICKNESS AS NOTED BELOW

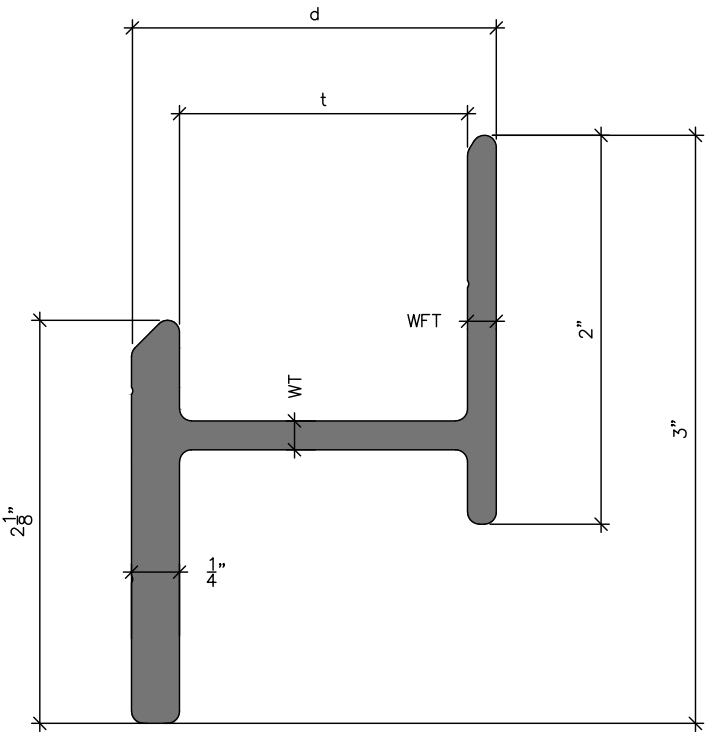
INSULATION THICKNESS (t)	1.5" (38.1mm)	2" (50.8mm)	2.5" (63.5mm)	3" (76.2mm)	3.5" (88.9mm)	4" (101.6mm)	4.5" (114.3mm)	5" (127mm)	5.5" (139.7mm)	6" (152.4mm)	5.0"ULTRA (127mm)	5.5"ULTRA (127mm)	6.0"ULTRA (127mm)	8.0"ULTRA (127mm)
STRONGIRT DEPTH (d)	1.9" (48.3mm)	2.4" (61.0mm)	2.9" (73.7mm)	3.4" (86.4mm)	3.9" (99.1mm)	4.4" (111.8mm)	4.9" (124.5mm)	5.4" (137.2mm)	5.9" (149.9mm)	6.4" (162.6mm)	5.5" (140mm)	6.0" (152mm)	6.5" (165mm)	8.5" (216mm)

SUBSTRATE: SHEATHING / MASONRY	INSULATION: BY OTHERS (ALL)	SOFFIT INSIDE DETAIL-3 NOT TO SCALE
CLADDING: --- ---	DATE: 01-25-2023	
	GIRT ORIENTATION: HORIZONTAL	

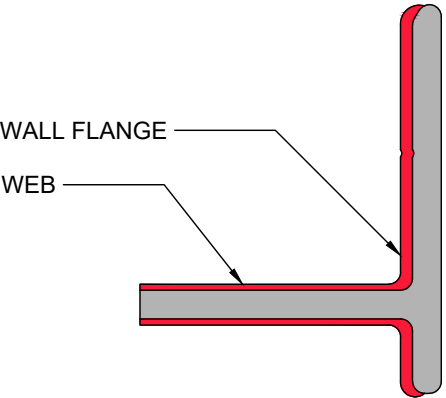
NOTE: DETAILS ARE PROVIDED FOR INFORMATION ONLY, AND ARE SUBJECT TO CHANGE WITHOUT NOTICE. SPECIFIC PROJECT ENGINEERING BY OTHERS WILL ADDRESS ATTACHMENT SPACING, ORIENTATION AND LOADING. CONTACT STRONGWELL FOR FURTHER DETAIL, AND TO INQUIRY ABOUT UPDATES AND REVISIONS.



INSULATION THICKNESS (t)	STRONGIRT DEPTH (d)
1.5" (38.1mm)	1.9" (48.3mm)
2" (50.8mm)	2.4" (61.0mm)
2.5" (63.5mm)	2.9" (73.7mm)
3" (76.2mm)	3.4" (86.4mm)
3.5" (88.9mm)	3.9" (99.1mm)
4" (101.6mm)	4.4" (111.8mm)
4.5" (114.3mm)	4.9" (124.5mm)
5" (127mm)	5.4" (137.2mm)
5.5" (139.7mm)	5.9" (149.9mm)
6" (152.4mm)	6.4" (162.6mm)
5.0"ULTRA (127mm)	5.5" (140mm)
5.5"ULTRA (127mm)	6.0" (152mm)
6.0"ULTRA (127mm)	6.5" (165mm)
8.0"ULTRA (127mm)	8.5" (216mm)



STRONG GIRT



STRONG GIRT ULTRA

SUBSTRATE: SHEATHING / MASONRY	INSULATION: BY OTHERS (ALL)	STRONGIRT AND ULTRA STRONGIRT 1'-0"=1'-0"
CLADDING: --- ---	DATE: 01-25-2023	
	GIRT ORIENTATION: HORIZONTAL	