



## A GIRT RESTORATION PROJECT

In 2023, a restoration project was completed on a historic building located in Johnson City, Tennessee. In decades past, the building served in multiple capacities including a courthouse, bank, and post office.

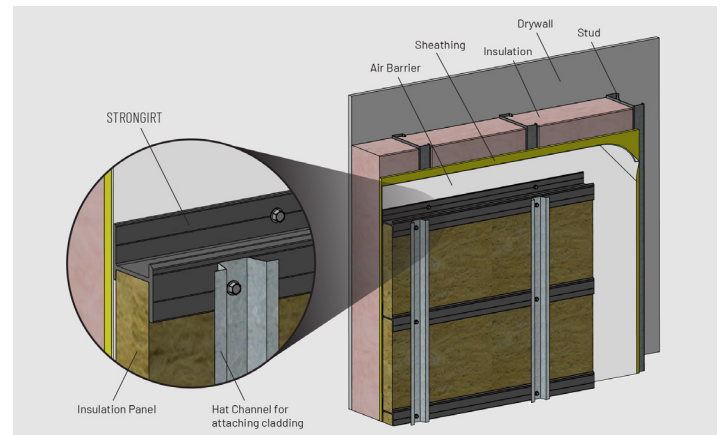
BurWil Construction Company was selected as the lead contractor for this job. As part of the redesign of the building, Petrarch Engineered Stone Rainscreen Panels were specified for exterior portions of this building. Specifically, on the exterior façade of an added elevator and lobby entrance.

To support these panels, 4" STRONGWELL® was used as a cladding attachment support system. Manufactured by Strongwell, this product line is exclusively Made in the USA and has been certified in accordance with NFPA 285, ASTM E84 and UL 94 requirements with regard to flammability and flame spread.

In addition to exterior walls, some of the interior walls also utilized this product as a thermal bridge as STRONGWELL®'s R-Value is equal to 11.23 versus that of steel's at 7.14. STRONGWELL® can be installed horizontally or vertically and will work with all nonproprietary types of insulation.

Compared with other products on the market similar in design, The Petrarch Engineered Stone Rain Screen Panels with the STRONGWELL® system was much lighter in weight to handle, thus requiring less labor and reducing the need for heavy lifting equipment. The architectural panels and cladding systems were easily handled by one or two installers at a time.

Upon completion, the contractor was extremely pleased with the ease of installation and aesthetics of the overall project. In combination, both products will provide the building with decades of reliable service. ●



## TECHNICAL DATA

Product:	Continuous Insulation Cladding Attachment Support System
Process:	Pultrusion
Materials & Sizes:	STRONGWELL® Cladding Attachment Support System: 4" deep
For:	BurWil Construction Company
User:	City of Johnson City, TN



Bristol Location  
 400 Commonwealth Ave.  
 Bristol, VA 24201 USA  
 (276) 645-8000  
[www.strongwell.com](http://www.strongwell.com)