

SAFPLATE® OFFERS SURE FOOTING

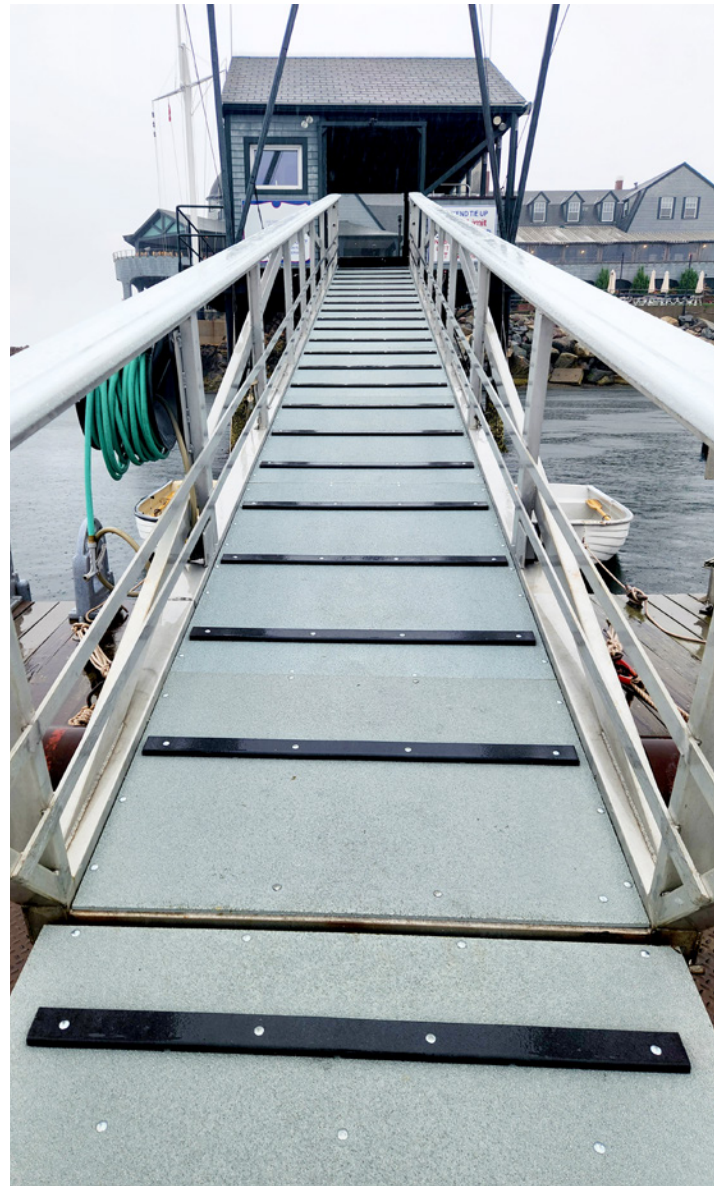
In early 2025, a yacht club located along the North Shore of Massachusetts undertook a safety and durability upgrade on a main dock access ramp. The ramp is exposed year-round to saltwater, spray, rain, and seasonal temperature swings, creating a consistently wet and potentially hazardous walking surface for members and staff.

Based on positive previous experience with Strongwell FRP sourced from a regional distributor, the club reached out directly to Strongwell to source the needed 3/8" thick SAFPLATE® with epoxy coarse grit, finished in a light gray color.

The aggressive slip resistance of the panels is suitable for a consistently sloped, marine-exposed application, while the light gray color complements the surrounding dock infrastructure and maintains the aesthetic of the facility.

The SAFPLATE FRP panels were mechanically fastened to the existing ramp structure using 316 stainless steel hardware, providing corrosion resistance in the saltwater environment and ensuring long-term attachment integrity. Rubber traction cleats were installed perpendicular to the direction of travel across the ramp surface.

The completed installation delivered immediate improvements in safety, traction, and overall usability of the dock access ramp. Members now experience a stable, slip-resistant walking surface in all weather conditions, while the club benefits from a durable FRP solution that resists corrosion, preserves the visual character of the facility, and is expected to offer many years of service with minimal maintenance. ●



TECHNICAL DATA

Product:	Yacht Club Dock Ramp Floor
Process:	Pultrusion, Fabrication
Materials & Sizes:	SAFPLATE® Gritted Plate - 3/8" thick with epoxy coarse grit
For & User:	a yacht club in Massachusetts



Bristol Location
400 Commonwealth Ave.
Bristol, VA 24201 USA
(276) 645-8000
www.strongwell.com